

Landscape Recovery Projects

sustainability resilience
improvement recovery
renewal wildlife locality natural capital
habitats planning ecosystems
waterways access character
enabling community diversity leisure
infrastructure nature strategy
species funding partnership
environment
protection

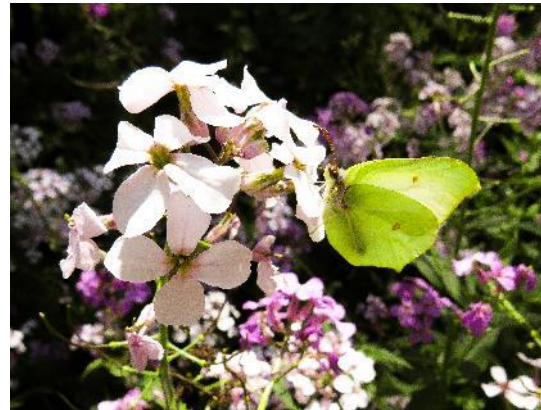
Landscape Recovery Mission

To enhance, protect, and restore the Colne Valley so both people and wildlife can thrive, now and for generations to come.



Improving Landscape Quality & Access

- Opening/restoring neglected footpaths
- Enhancing entrance points to green spaces
- Creating better connections between paths
- Organising litter picks to keep our spaces clean and inviting



Conserving & Enhancing Biodiversity

- Managing woodlands, rivers, and green spaces to ensure they're healthy and diverse.
- Tackling invasive species that outcompete our native plants and wildlife.
- Restoring habitats so native species can flourish again.
- Enhancing connectivity for wildlife

Landscape Recovery Areas

Bergey

Buckinghamshire (Denham, Chalfont St. Peter and Gerrards Cross)
Slough (Colnbrook with Poyle)

North Hillingdon

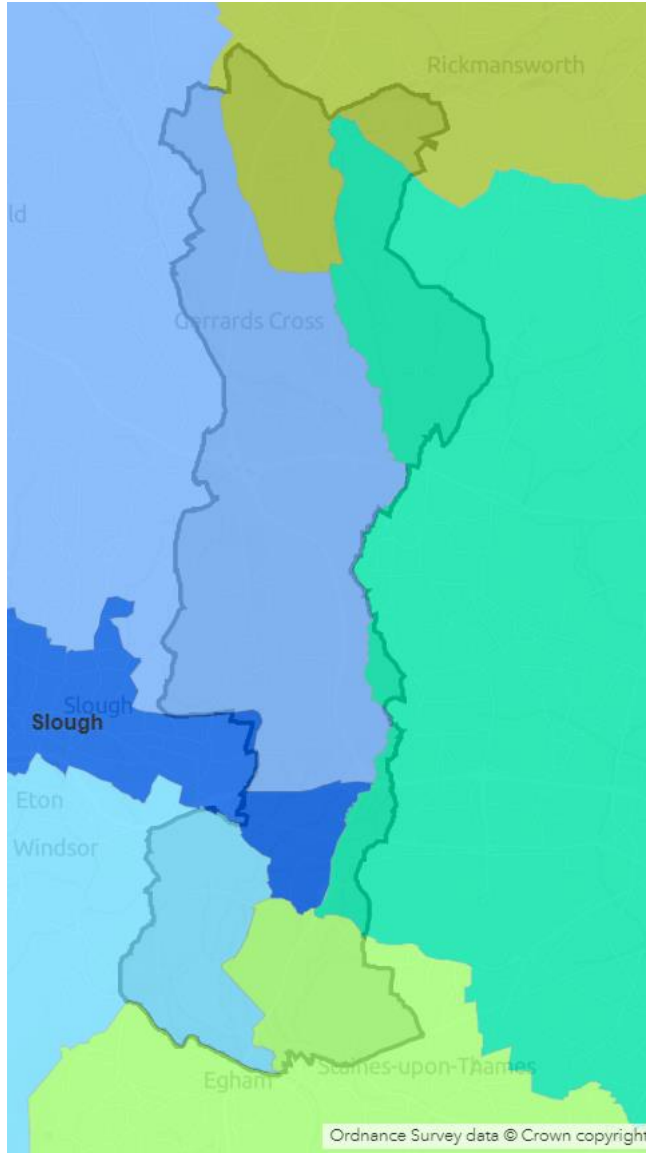
Royal Borough of Windsor and Maidenhead
(Wraysbury and Horton)

Michelle

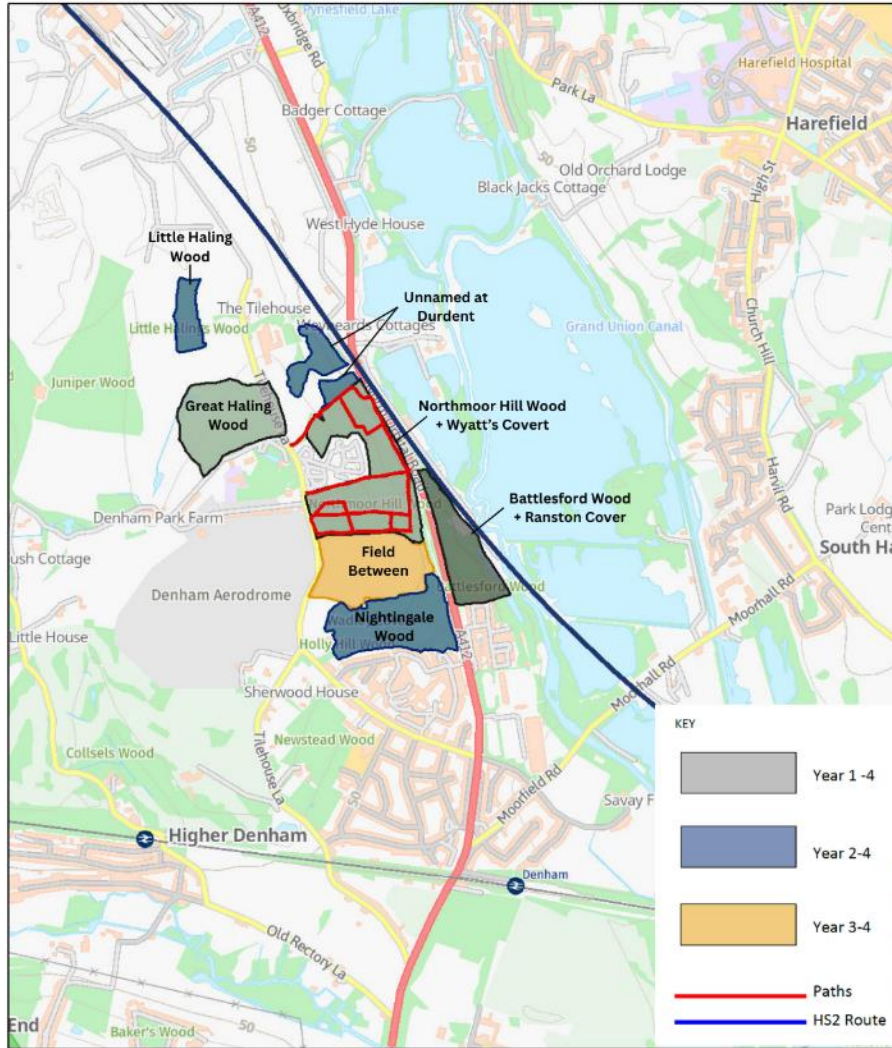
Hertfordshire

South Hillingdon

Heathrow Area
Spelthorne & Staines
Colne Valley Park Trail



Denham Woods - HS2 AMP Application



3/5/2024

Landscape Recovery Projects Denham Woods

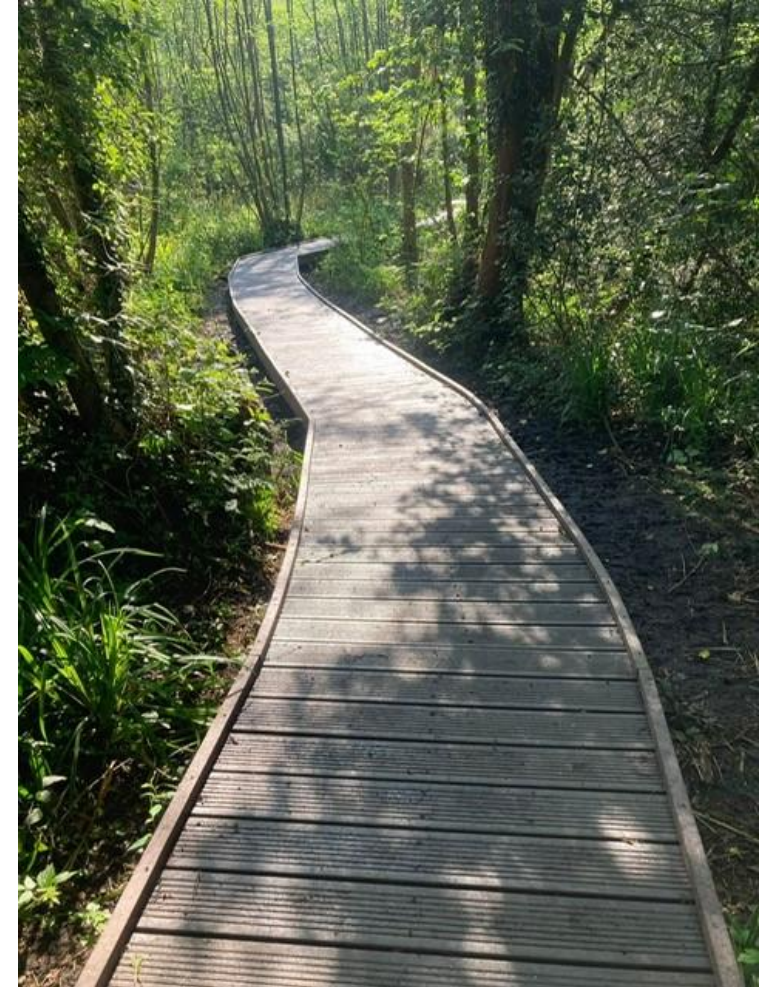
HS2 AMP: £172,000

Match Funding: £92,000

- 7 management summaries produced
- 58.5 hectares of woodland improved for biodiversity
- 30 volunteer conservation tasks involving 1500 volunteer hours
- 3 km of access improvement
- 12 guided walks and community events
- 2 trails improved (Rock Route at Northmoor Hill Woods – an interesting geological route and Denham Woods walk)

Landscape Recovery Projects

Denham Woods – First Phase Northmoor Hill Woods

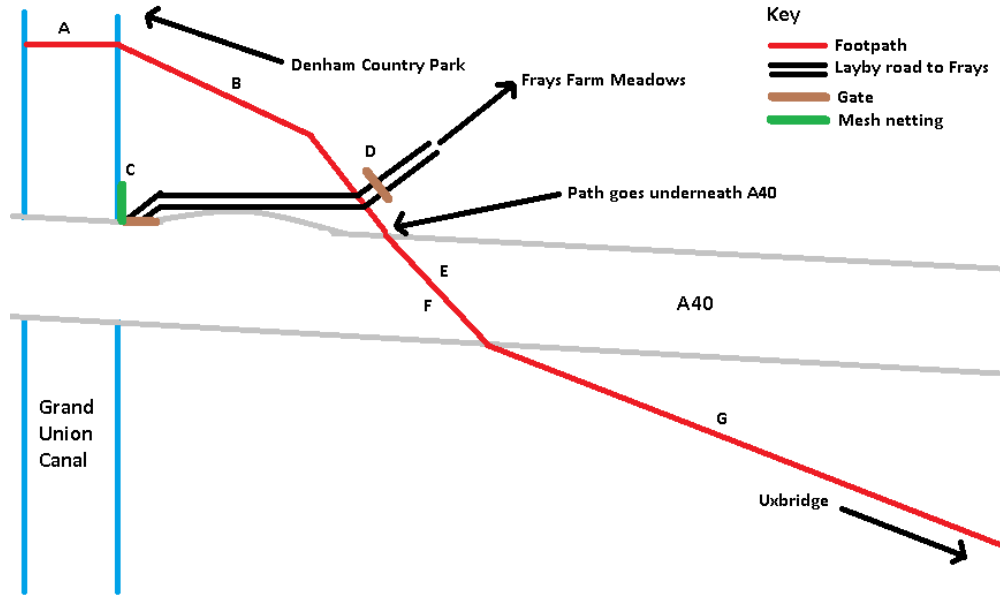


Landscape Recovery Projects

A40 Footpath Improvement

1st Stage Funding: £23,000 (complete Aug 23)
Heritage Lottery Funding

2nd Stage Funding: £36,000 (underway)
Landfill Community Fund (Grundon)



Landscape Recovery Projects

New interpretation boards – Old Orchard & Denham Village Community Board Funded / Grondon (LCF)

EXPLORE THE COUNTRYSIDE AROUND DENHAM VILLAGE

Denham Village
Denham Village sits in the heart of the Colne Valley Regional Park, the first taste of countryside west of London. Denham Village is mentioned in the Domesday Book as Denham and means 'homestead in a valley'. The Old Bakery, built in about 1340, is one of the earliest surviving buildings in the village. There have been many famous people who lived in the village, Sir John Mills, Robert Lindsay, Patrick Wymore to name but a few. The village has appeared in many feature films and series such as Matilda and Midsommer Murders.


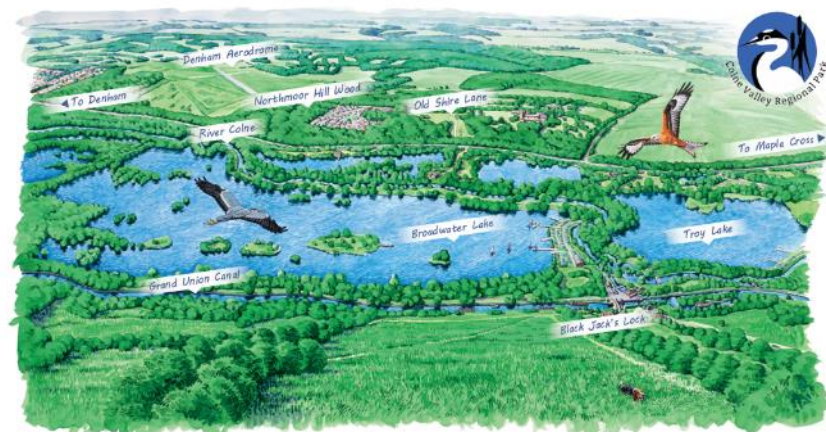
Denham Country Park (1.5 miles)
A scenic and relaxing location on the banks of the River Colne, visitors can enjoy a mix of wildlife. Visitors may catch a glimpse of herons and grebes, while in summer, damselflies and dragonflies dart over the wet meadows. From the village area, there are two easy access routes to the Country Park. Head to the village church and follow the footpaths, shown in blue. Follow the golf course, which will lead you to the Country Park.

Denham Village Circular Walk (2.7 miles)
Explore history in Denham village and the woodlands, waterways and meadows of Denham Country Park. From the Village Green, head to the Pygidie and start your circular walk from there, shown in red on the map. Download a walking map using the QR code.

Village Church
St Mary's Church, Village Road, Denham Village. Its tower, nave and aisles date from around 1440. The Church is one of the 13th, the earliest surviving part of the church is from the 12th. The font dates back to the 11th. Some windows also date back to the 13th. It also has a War Memorial in the churchyard and Commonwealth War Graves on the approach to the open churchyard. St John Mills, actor and former resident is buried here with his wife.

Denham Woods Circular Walk (5.2 miles)
Explore the ancient Denham woodlands and the heart of the Colne Valley. During springtime, you'll see carpets of bluebells on your walk. Make your way to Denham Green via the Pygidie, then continue to Northmoor Hill Wood, shown in purple on the above map. Download a walking map using the QR code.

Scan the QR code for more information and downloadable leaflets for the circular walk.

History

The Colne Valley Regional Park, founded in 1965, is the first large taste of countryside lying immediately west of London. You are standing near the spot where representatives from the local authorities in Hillingdon and Buckinghamshire took in this view across the valley and discussed how this precious landscape could best be managed and improved for the benefit of people and wildlife for generations to come.

Changing Landscape

The illustration above shows how this section of the valley looked prior to the HS2 railway project. The Colne Valley's history is one of continuing change, and you can see this section of the valley now has the largest railway bridge in the UK, 2.1 miles (3.4km) in length, running through it. The Colne Valley has been inhabited for at least 8,000 years. While it was initially shaped by glacial activity and the effects of flooding, it was the intervention of industry, most significantly the digging of gravel pits in the 20th century, that has left us with the wonderful mosaic of lakes and connecting waterways that we can enjoy today.

Scan the QR code to download our circular walks. Look for South Harefield walk.



Supported by



Landscape Recovery Projects

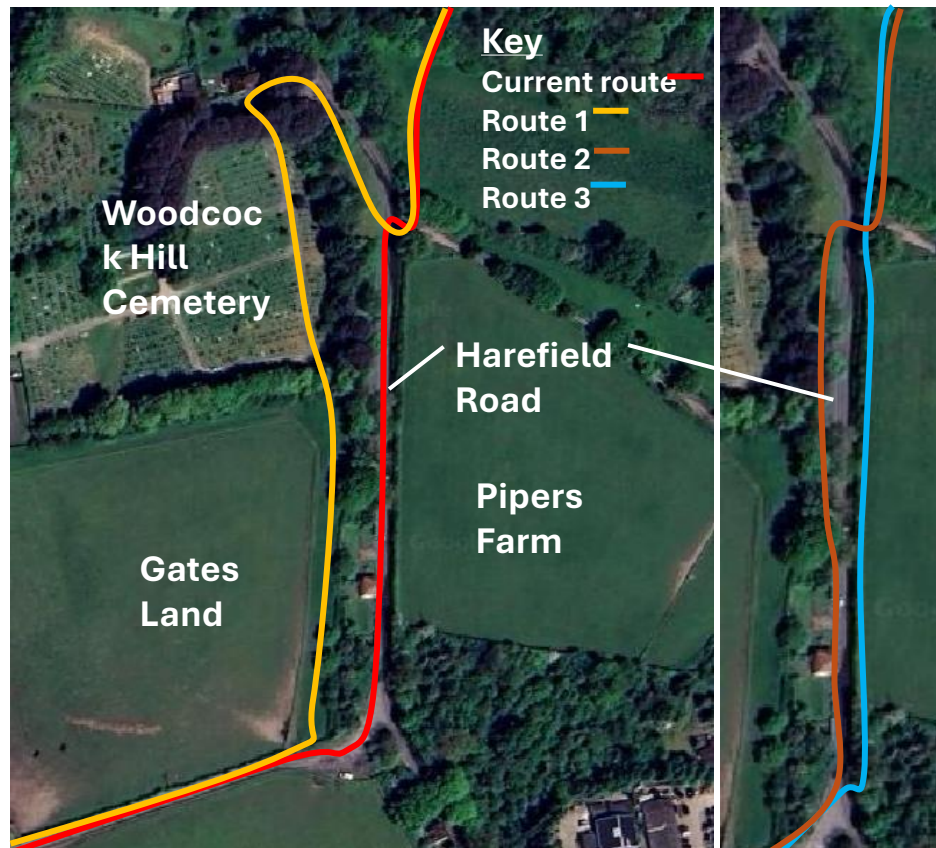
Stanwell Village – Staines Moor Path
Funding: Thames Water
& Ramblers Association



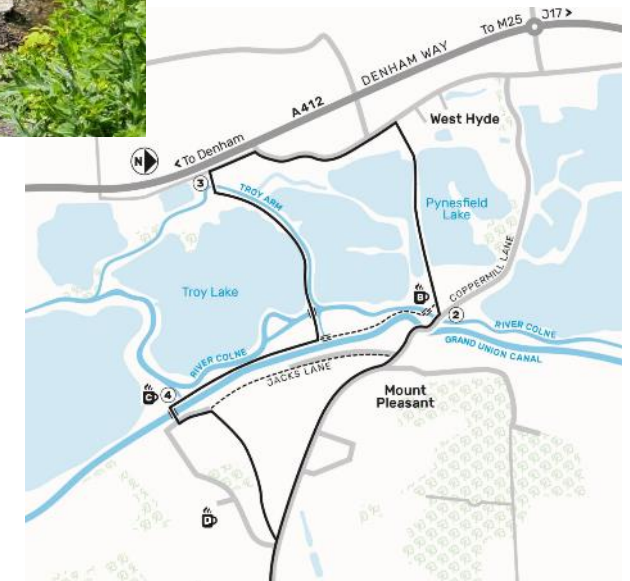
Landscape Recovery Projects

Three Rivers Footpath Projects

Woodcock Hill Footpath Batchworth Community Council



West Hyde Footpath Hertfordshire County Council





Landscape Recovery Projects

Improving landscape quality in Horton

S106 funded 10-year project

Current Focus: Arthur Jacobs Nature Reserve, Poyle Poplars & the Colne Brook, Crown Meadow

Litter picks, coppicing to improve biodiversity, fabulous community volunteers, clearing entrance to Nature Reserve, invasive species removal. Working towards further community engagement.



Landscape Recovery

Denham Canal Litter Pick Jan 2025



The Challenge



Partners



Hillingdon Litter Pickers



Friends of Colne Valley Park

On the day



Working with ReAP



Team Working



See insights and ads Boost post

You and 38 others 4 comments 1 share

Like

Comment

Share

Most relevant ▾

REAP UK

Well done everyone, great work yesterday, you'll be pleased to know the Reap UK van was fully loaded today and will travel to Hull on Monday and all that nasty dirty plastic you collected will be transformed into plastic boards and then into a host of other useable items. 100% recycled

15w Like Reply Hide

Carole Catling

Sell done everyone. Great work. Much appreciated.

15w Like Reply Hide

Top fan

Thomas Berry

Good work

15w Like Reply Hide

Canal & River Trust

Huge thank you to everyone involved!

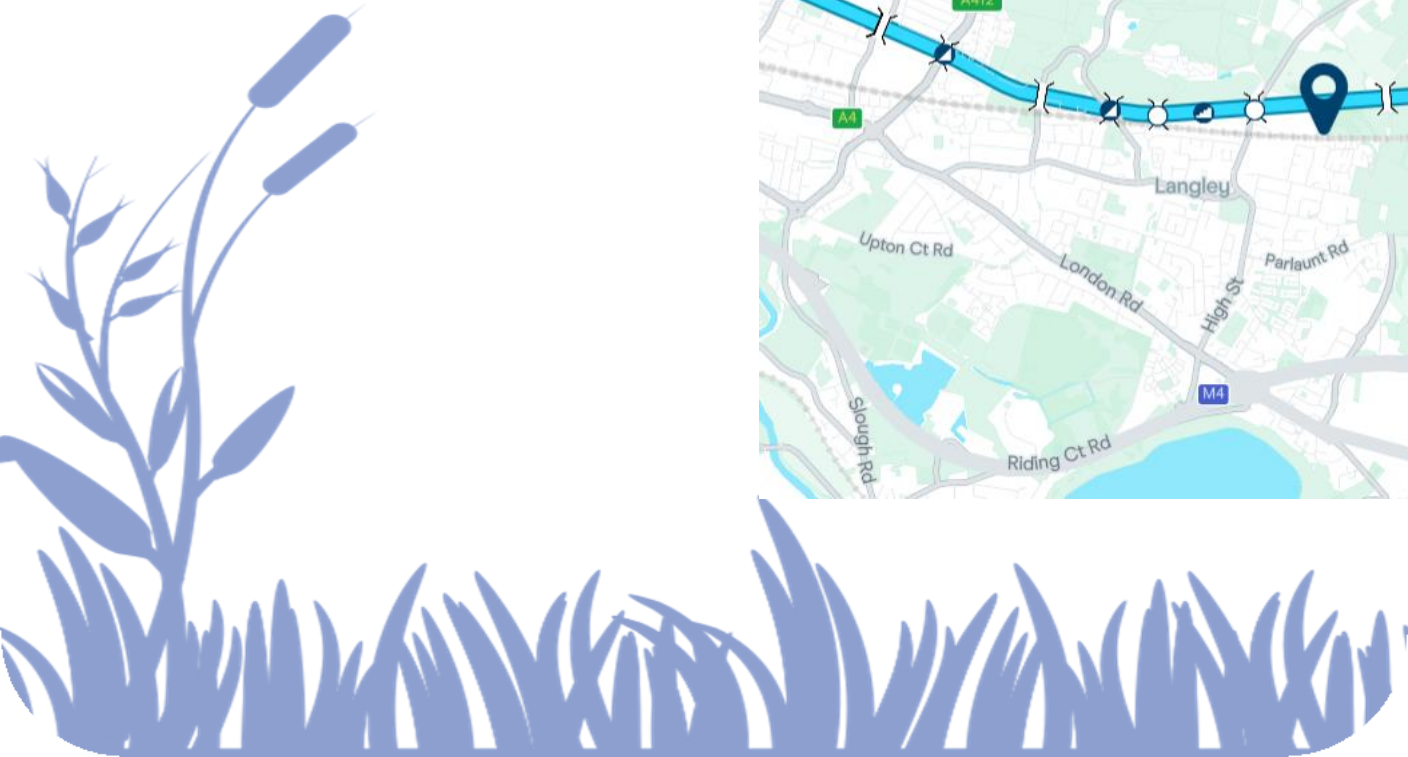
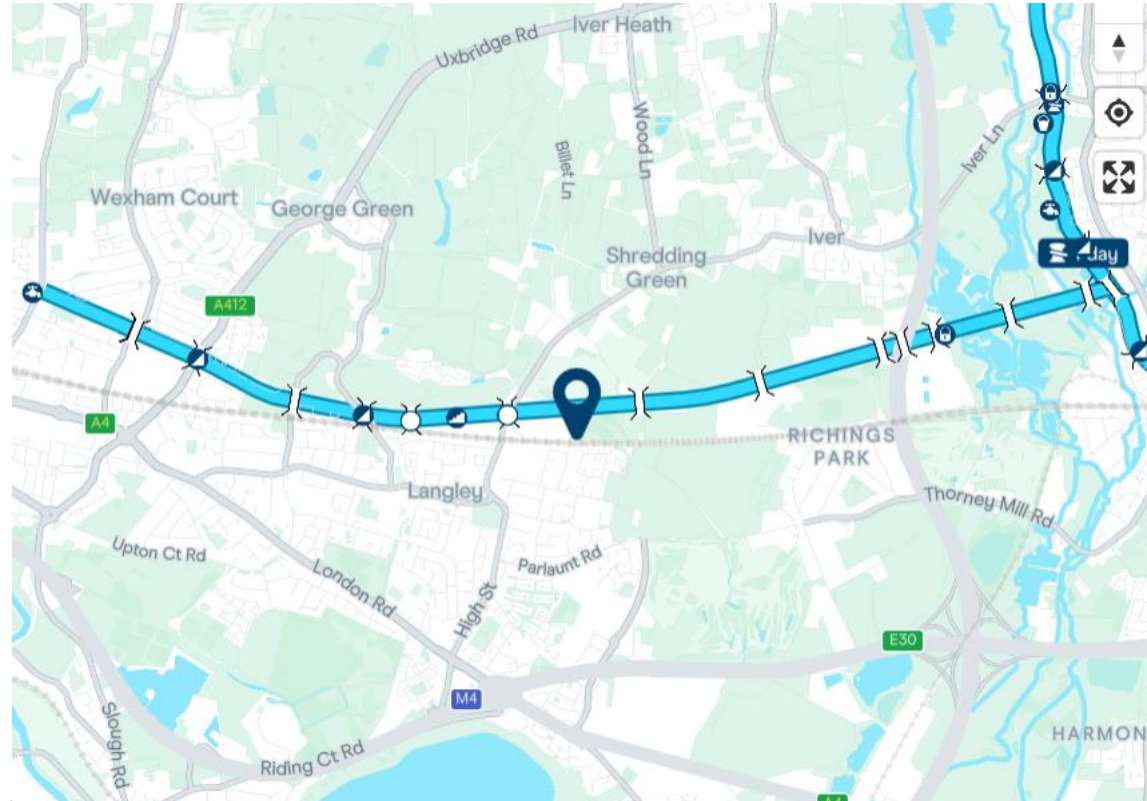
15w Like Reply Hide

Comment as Colne Valley Regional Park

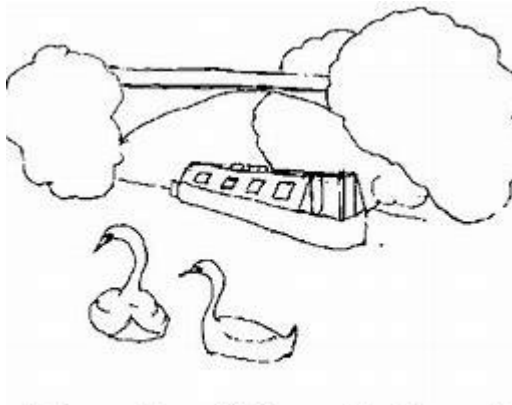


Landscape Recovery

Slough Arm Canal Litter Pick March 2025



Partners



Friends of Slough Canal



**Canal &
River Trust**

Making life better by water



Hillingdon Litter Pickers



Friends of Colne Valley Park

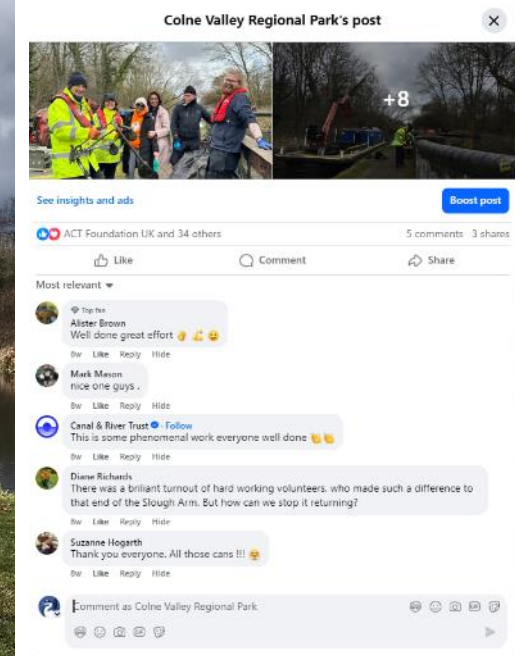


On the day



On the day





Funding applied for a schedule of further projects
Opportunity to share ideas in Workshop

Landscape Recovery Projects Affinity Field, Hillingdon



Ground nesting birds Habitat Enhancement

Funded by Affinity Water, HLF & Grondon (LCF)

Trees cut back and wildflower planting to enhance habitats

Pond overhanging trees cut back, duckweed cleared and marginal planting

Habitat renewed for ground nesting birds and benefits for great crested newts

AffinityWater



LEHAR
T

Landscape Recovery Projects

Beyond the Roadside Verge Projects

2 projects funded by Rhys Jeffries Road Fund, supported by Bucks Highways team.



A413 near Denham,
Entrance to Denham Circular Walk
New bollard, fencing, flytip removal, new
litter bins, new steps to ancient woodland



A412 near Denham, entrance to Northmoor Hill Wood

Regularly used fly tip site

New fencing installed to avoid flytipping

Pathway cleared and made accessible

Landscape Recovery Projects

Beyond the Roadside Verge Projects

2 projects funded by Rees Jeffreys Road Fund



Landscape Recovery Projects

Saxon Lake Footpath

Harmondsworth Moor

