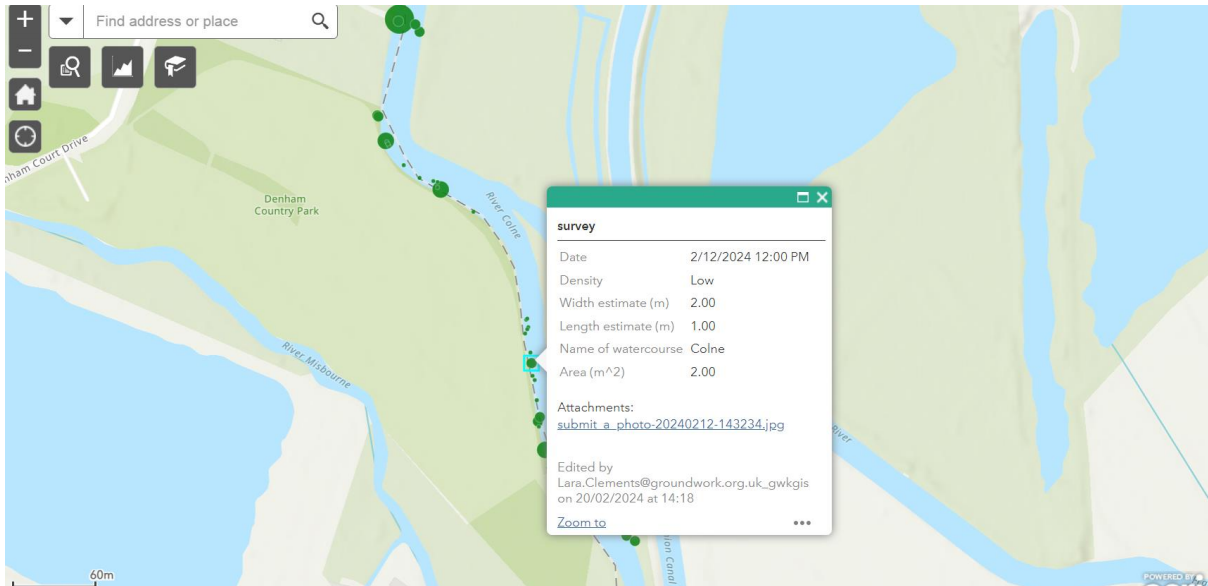


How to navigate the Web Map

Basics

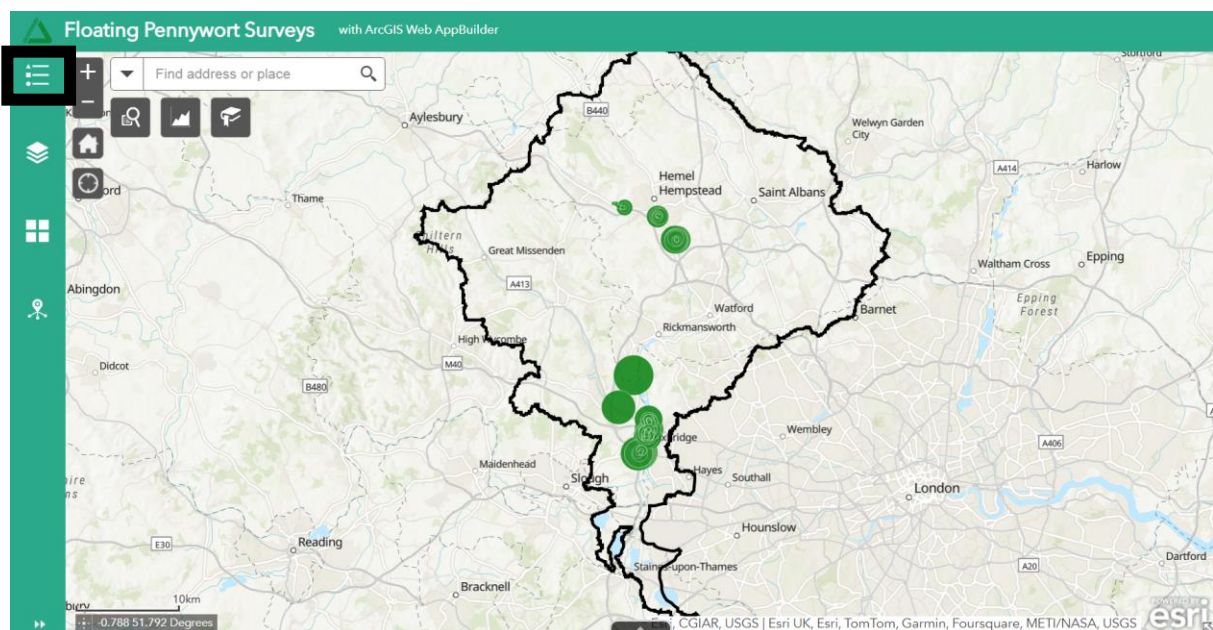
Look at an individual record

To open an individual record zoom in and click on one of the green circles. This will open a pop up showing you details of the report. This includes date, density, length, width, name of the river/water body, area, and a picture.



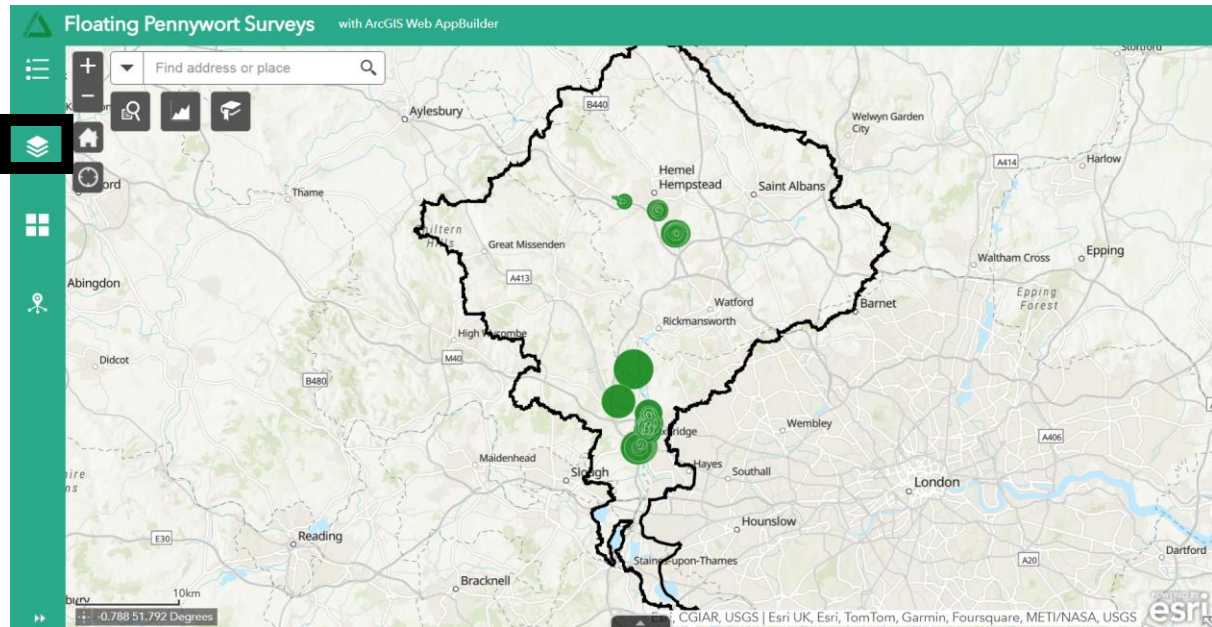
Look at the legend

Pressing this button will open the legend. The legend describes what is on the map. This shows the Colne Catchment boundary, and what areas of floating pennywort rafts are represented by the different sizes of green circles.



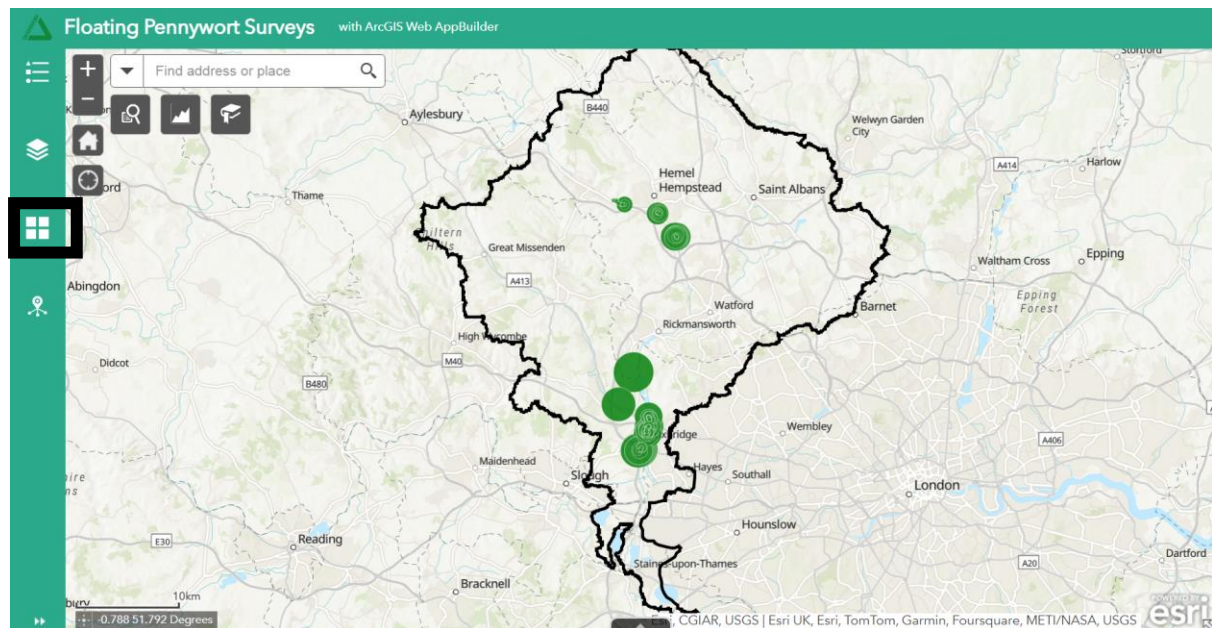
Open the layers and filter by time

Pressing this button will open the different layers. These are different selections of data. There is all the data (so every record through time), recent data (the most recent records in each area), and data per month (so records filtered by the month they were collected).



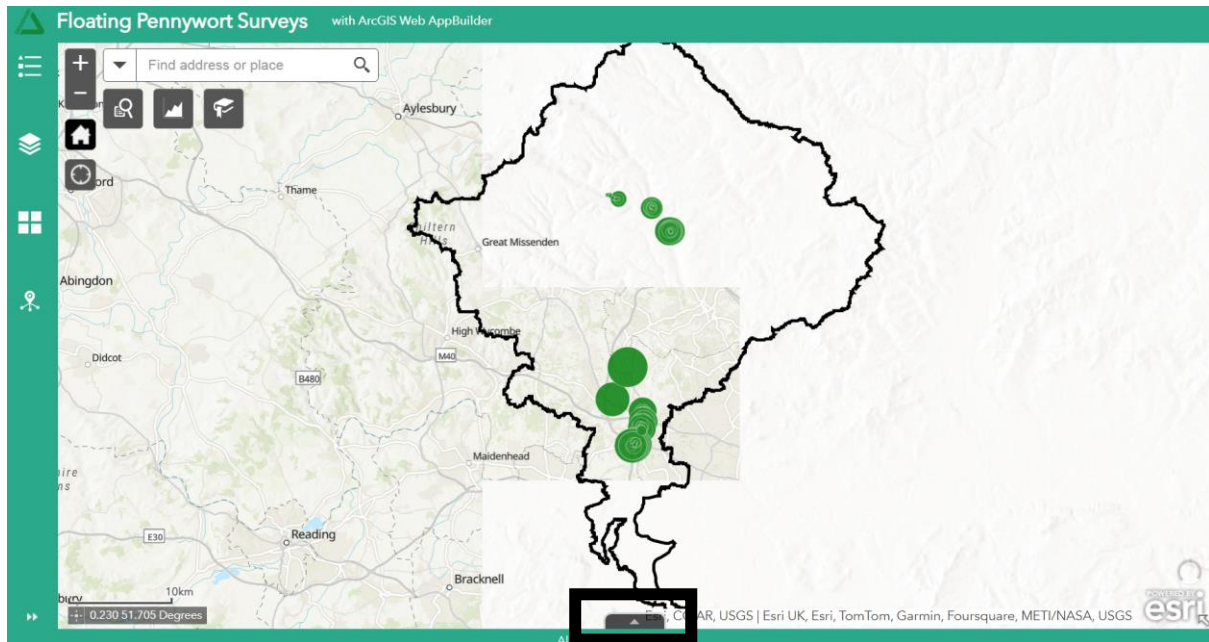
Open the basemap gallery – change the background map

Pressing this button will open up the basemap gallery. This allows you to change the background map (such as to satellite images) based on preferences.



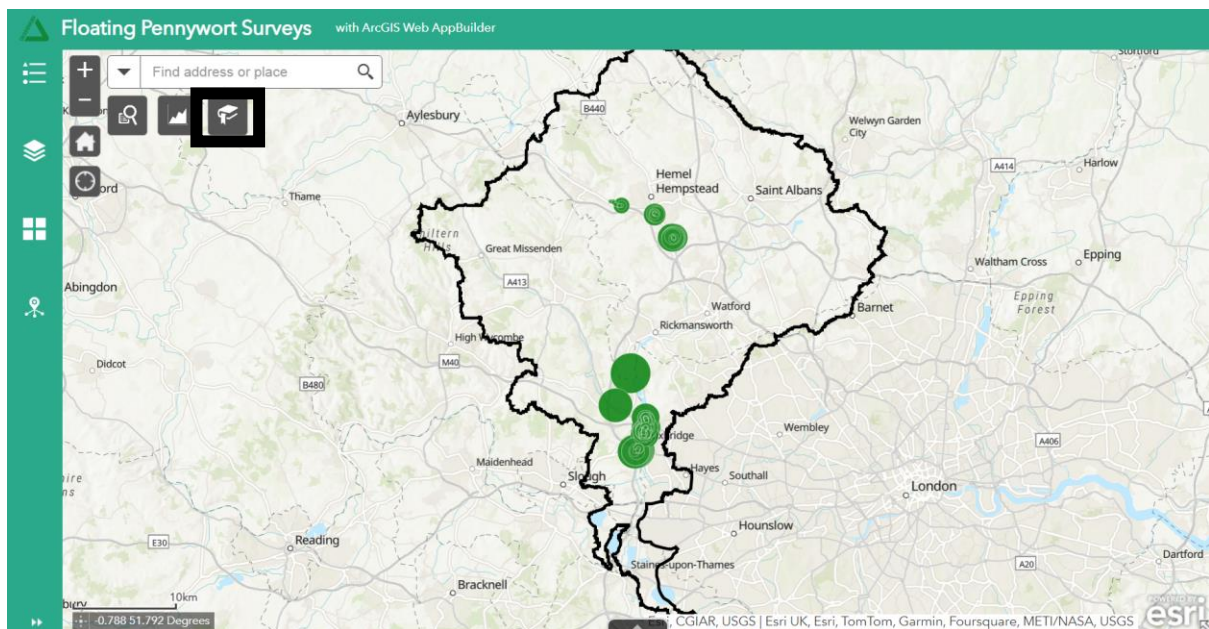
Open the data table

By clicking on this arrow you can open the table with all the data for the selected layer.

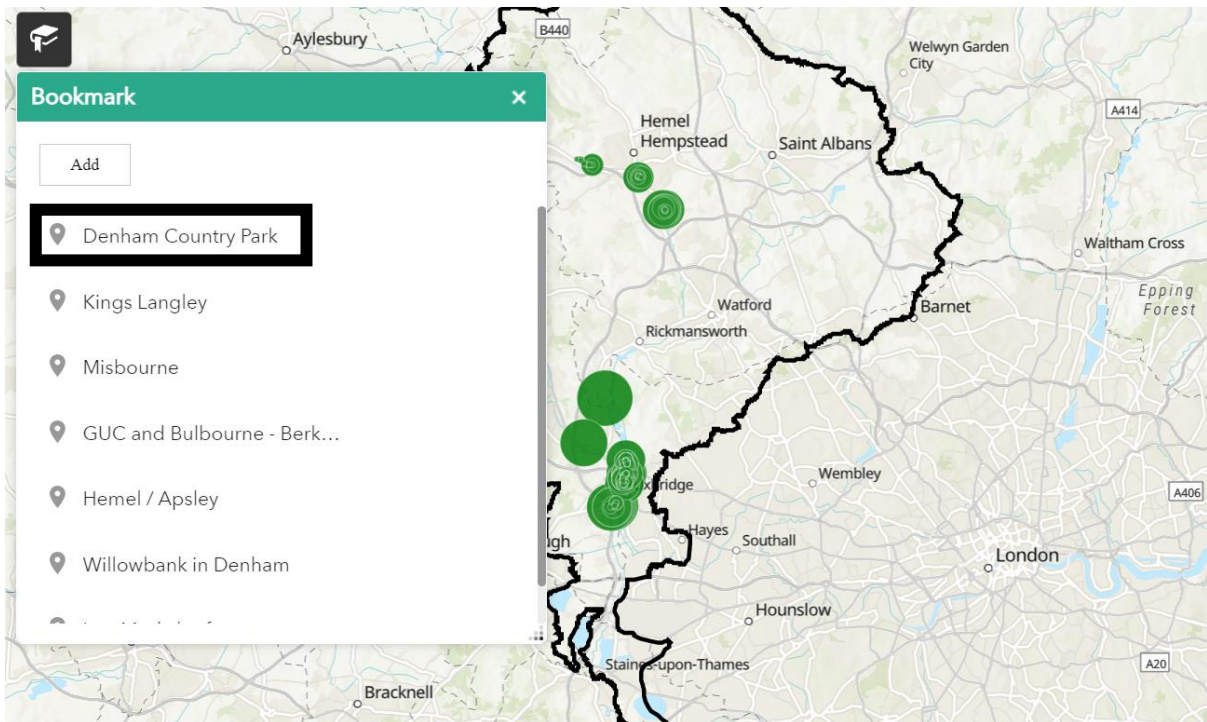


Open bookmarks – zoom to specific areas of interest

1. Click on this button to open the bookmarks



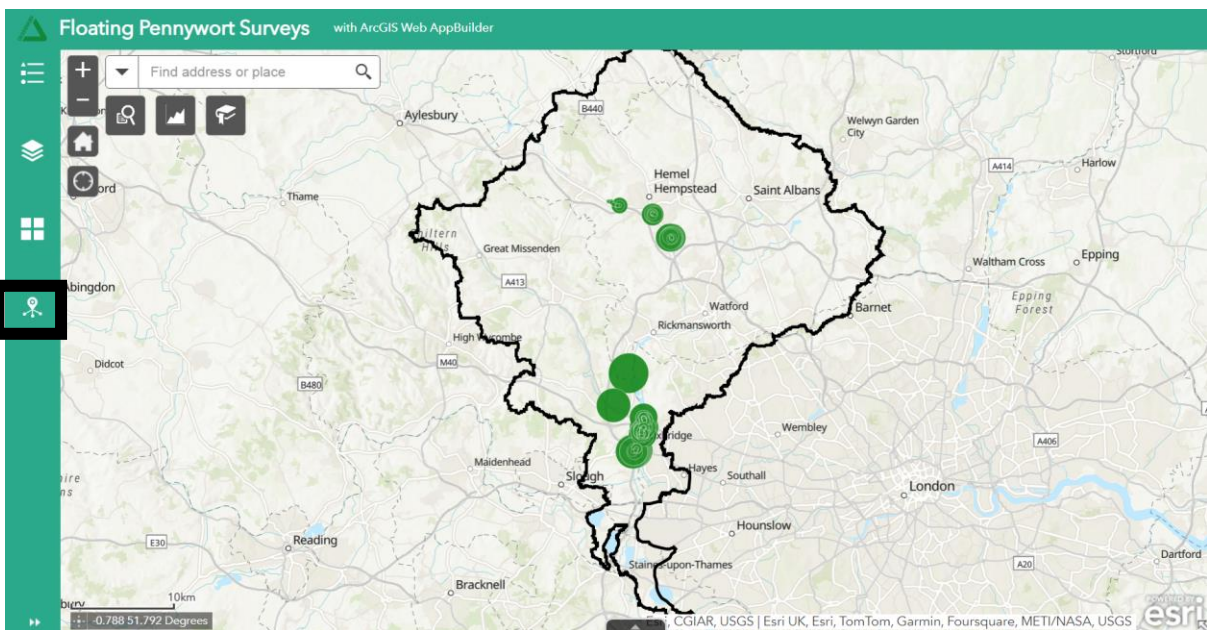
2. Click on an area of interest based on the name to zoom to the area.



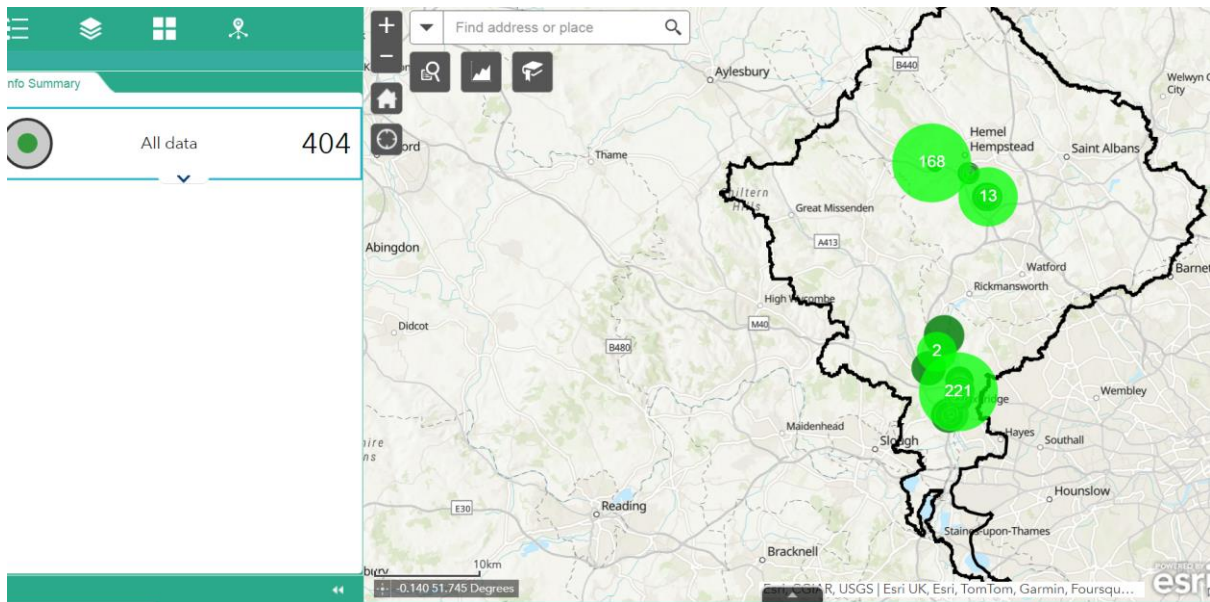
Advanced features

Infographic – look at reports at the same points through time

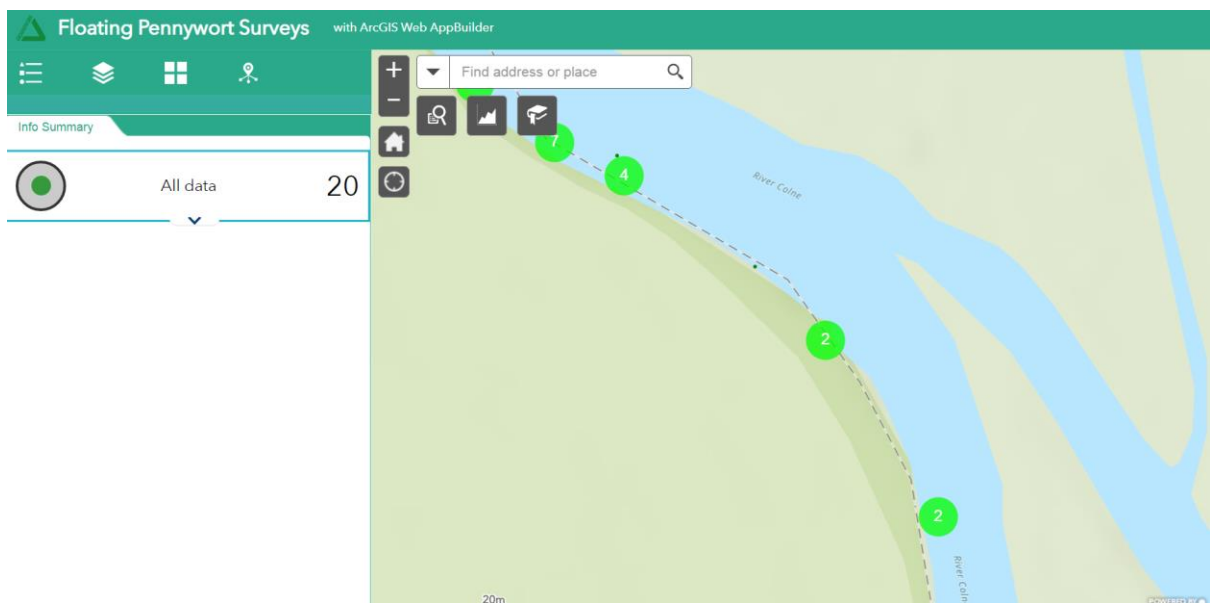
1. Pressing this button opens up what is called an “infographic”.



2. The infographic shown presents numbers of the records collected per area across time.

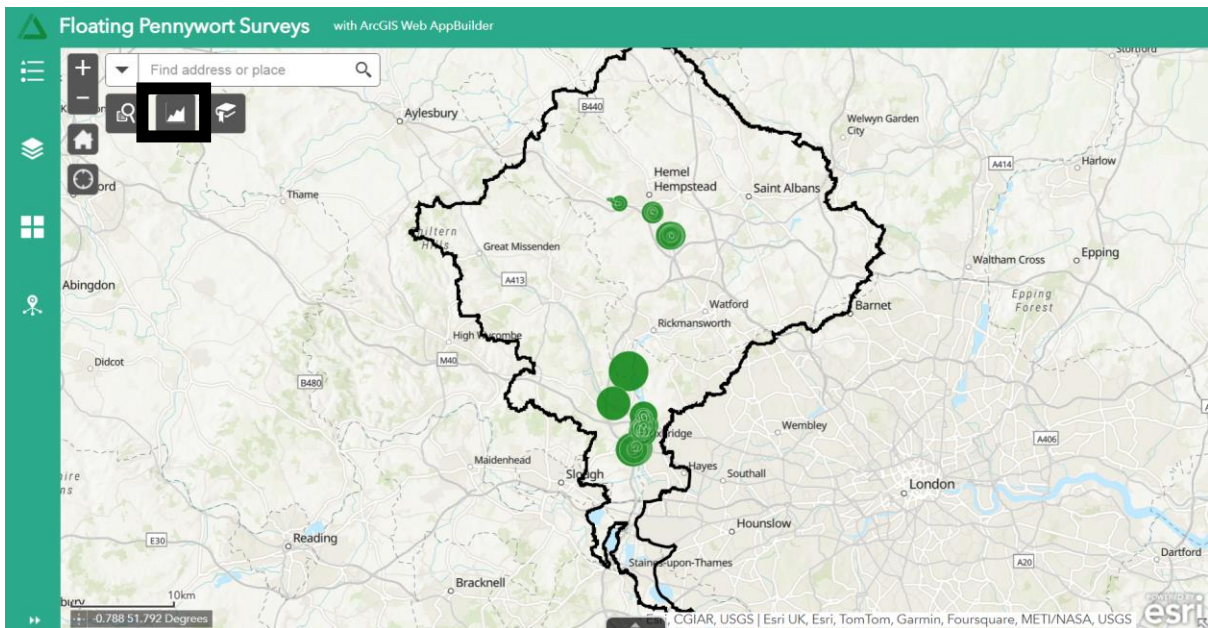


3. As you zoom into specific areas the infographic will present how many records have been recorded in the same area through time, and you can view these to see how the floating pennywort infestation may have changed across time.

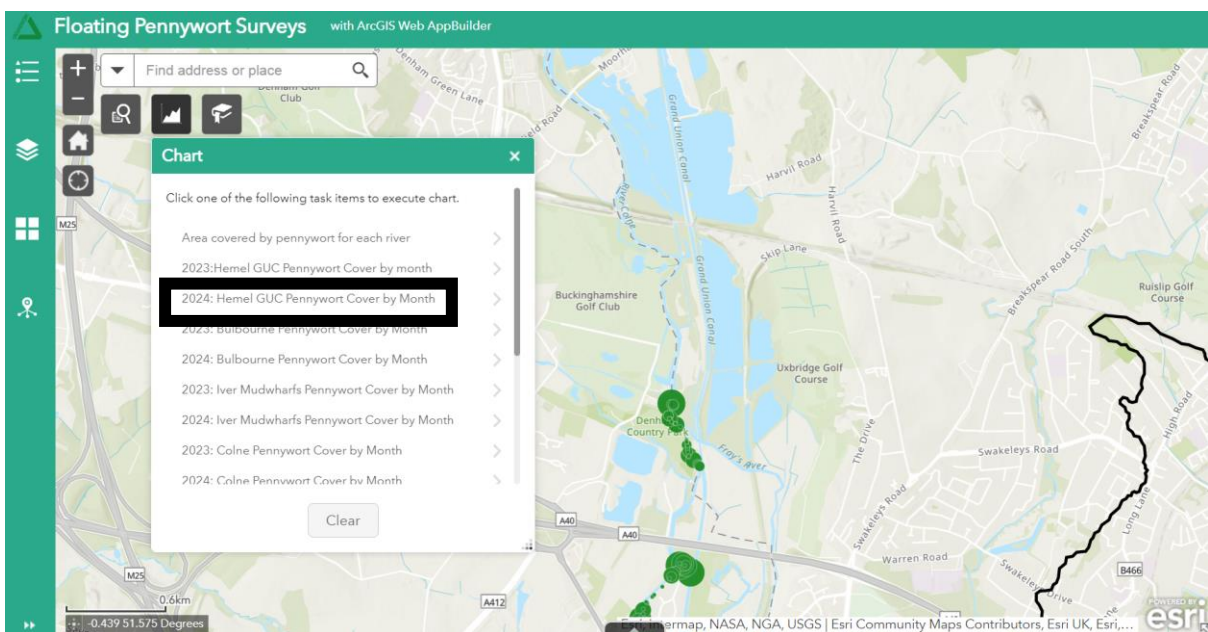


Open Charts – Look at Floating Pennywort cover per river, floating pennywort cover across months in different areas, and removal work that has been done across months

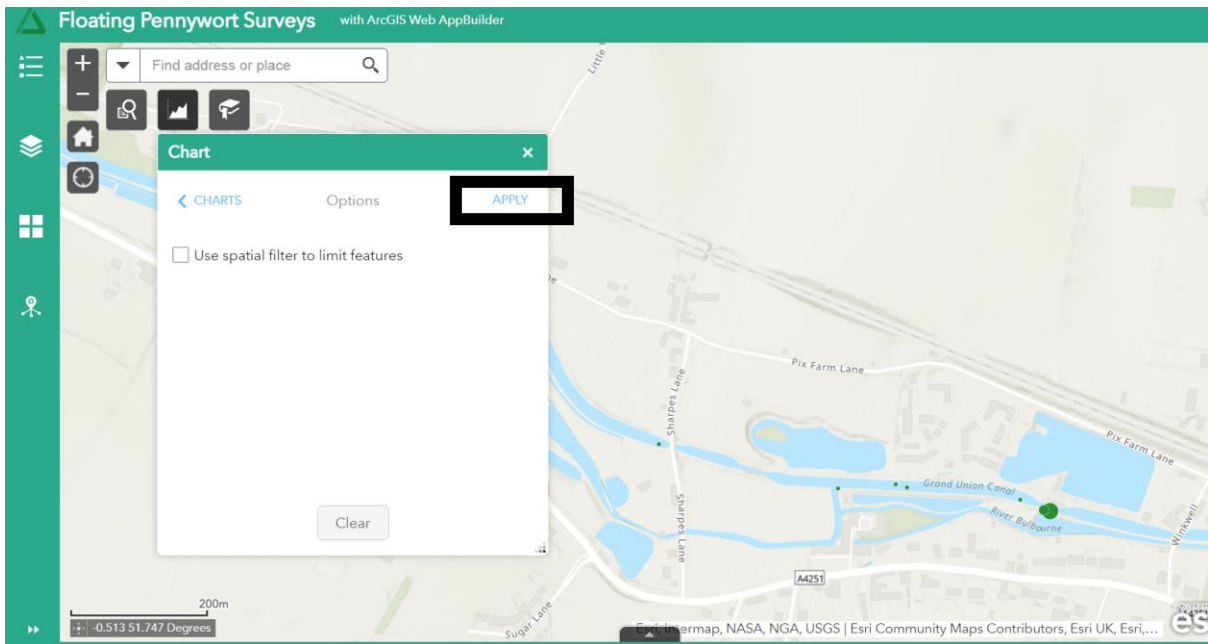
1. By clicking on this button you can open charts.



2. Click on the title of the chart you wish to generate

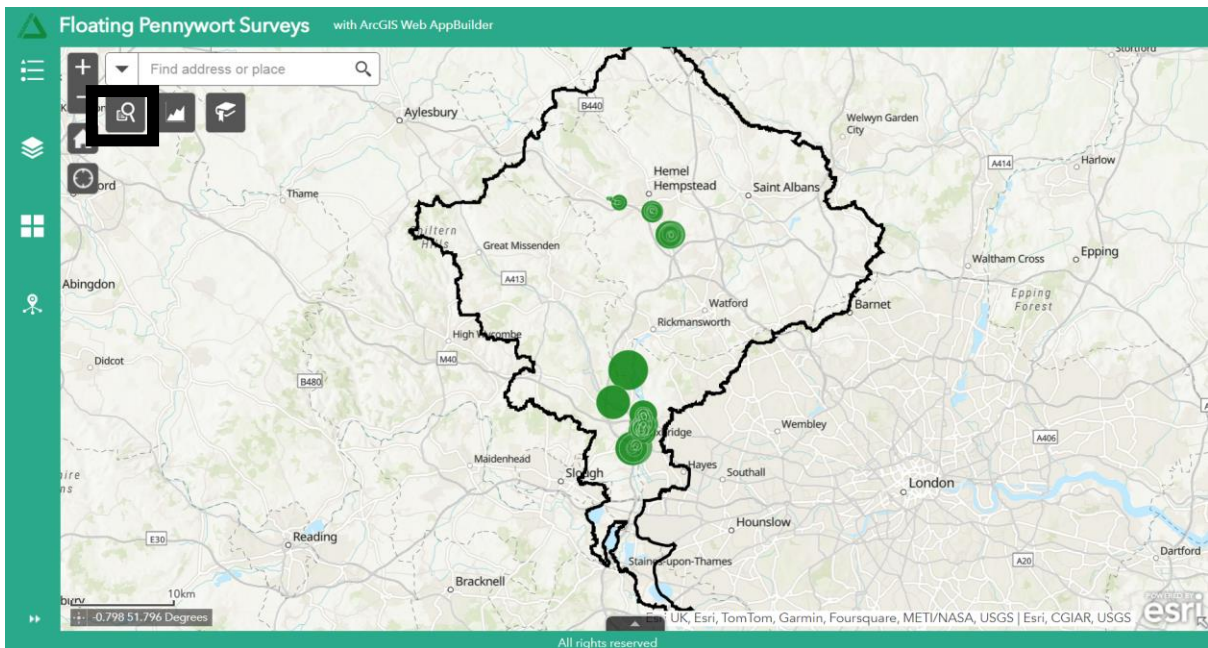


3. Click apply to view the chart



Perform a query – Highlight removal work on the map that has taken place

1. By clicking on this button you can perform a query (ask a question), this is set to ask questions and highlight floating pennywort removal work that has been done.



2. Click on which removal work you wish to identify and highlight on the map. This will highlight in blue what removal work has been done.

