

The Colne Valley – Landscape First

(working title)



**National Lottery Grants for
Heritage – £250,000 to
£10million**



The first Heritage Lottery Funding: Landscape on the Edge

- 2019 – 2023
- £2.5m (£1.6 from HLF)
- 19 projects
- 17 partners



“It allowed me to meet like-minded people in the area and other organisations. It has been impressive how many groups they have brought together under one scheme.”



- The Original bid to The Heritage Lottery in 2019 for £2.5m had 17 partners

“This project has realised a long held ambition to strengthen the Colne Valley Regional Park on all fronts and to bring together a host of partners that will continue to support the park into the future.”

And made
new partners
along the way:



BLACK PARK SHED



LAYDENCROFT®



“I knew nothing about the Colne Valley, I knew it was a thing, a place, but I didn’t think much about it. It’s only since I’ve seen this partnership in place that I’ve noticed how much work is being done, how many people there who are passionate about looking after the Colne.”



- “Improving spaces for wildlife has been a highlight for me; voles, eels, invertebrates and more have all benefited.”





Colne Valley: A Landscape on the Edge the Landscape Partnership in numbers

100 volunteers
contributing **3,000 hours**
to conserve and
improve the
Colne Valley

7 herds of conservation cattle
helping to bring nature
back to special places



Signs

42 wayfinding signs,
20 information boards, and **4 hand-carved statues** to mark the Colne Valley Trail

36 people trained
to check for signs of water voles and monitor for mink

and **44km** of rivers surveyed



1 unifying vision for improving local green and blue spaces

Paved the way
for a future
Bid to the
Heritage
Lottery;

15 organisations collaborating

100 anglers trained

2 weirs adapted
to help fish and eels move freely along the rivers



Colne Valley Park covers **40 square miles**
on the edge of **5 counties**

Over **70 lakes**

200km of river and canals

15km of river corridor enhanced to help water voles

100 managed sympathetically for water voles by anglers

Water saving advice in **14 different languages**

70km of river checked for damaging invasive species

44 Fishery managers trained in nature conservation



14 places improved for countryside recreation and exploration

72 training and expert sessions

Spreading the word through:

- 1** Interpretation centre
- 4** social media platforms
- 1** website
- 20** newsletters
- 20** walk leaflets

6 areas improved for habitat, not including voles and fisheries

150 events to bring people closer to nature in their area

2 trainees now in employment or further study



- **Landscape First** (working title) - a new bid to the Heritage

Lottery Fund:

- Initial expression on Interest early 24
- We can bid for between £250,000 and £10 million
- Over **X** years



Full guidelines will be published by the Lottery in January 2024

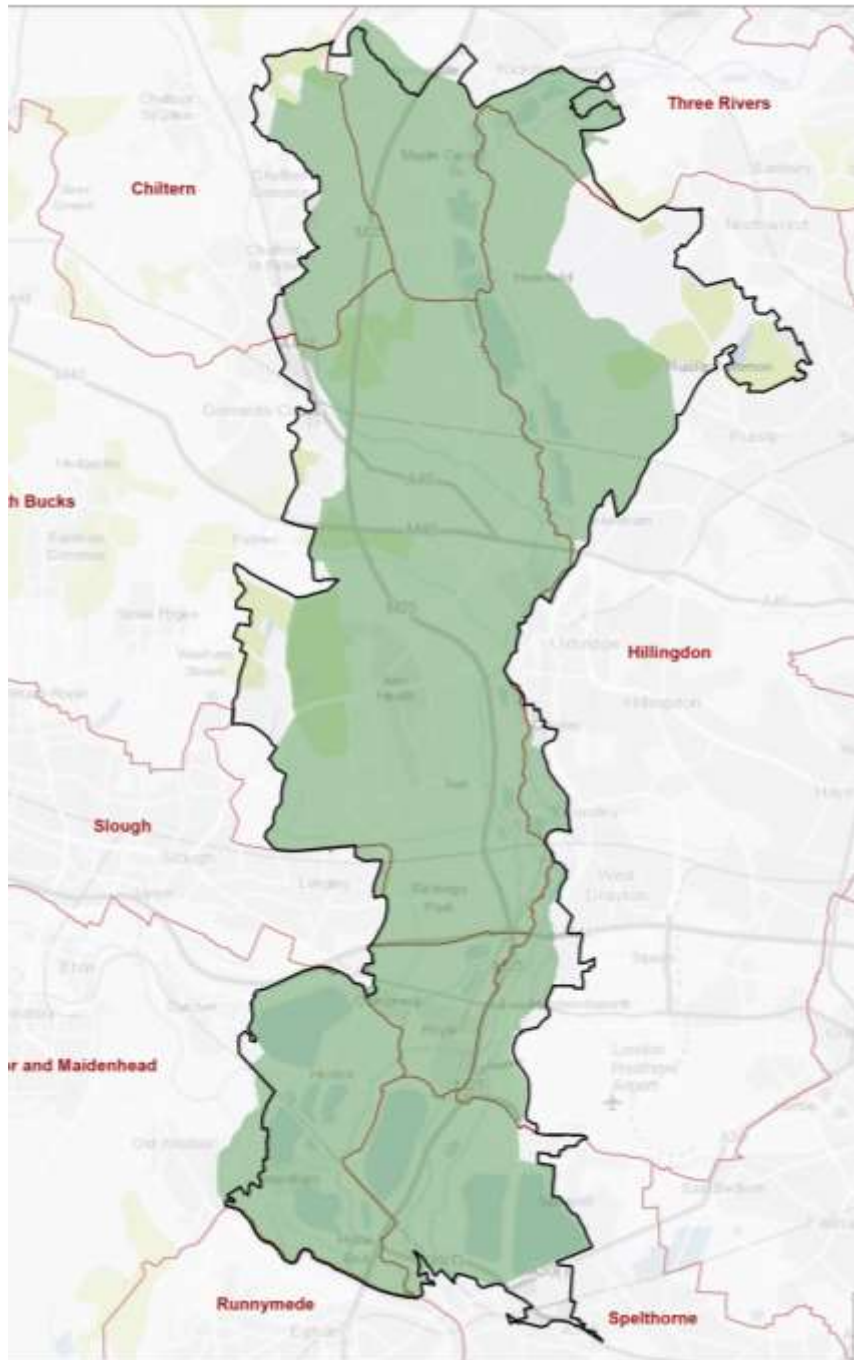
- **This bid has to be substantially different to the previous project:**

- Build on our experience of running projects with partners
- Focused on cohesion across the landscape



Your participation matters- even this early on in
the development of this bid





Colne Valley wide,
We do not have
to use the
Regional Park
boundary

VOTE!

**RED for
keeping the
boundary as
the current
Colne Valley
Regional Park**

**Blue for expanding
the area to include
the areas further
along the Valley ie;
more of River
Colne,
Aldbourn, Parts
of the River Pinn
and Ruislip Woods.**

-
- Offer different ways to be a partner:
 - delivery partner,
 - funding applicant,
 - part of the bid team





Our Objectives for this project (subject to discussion)

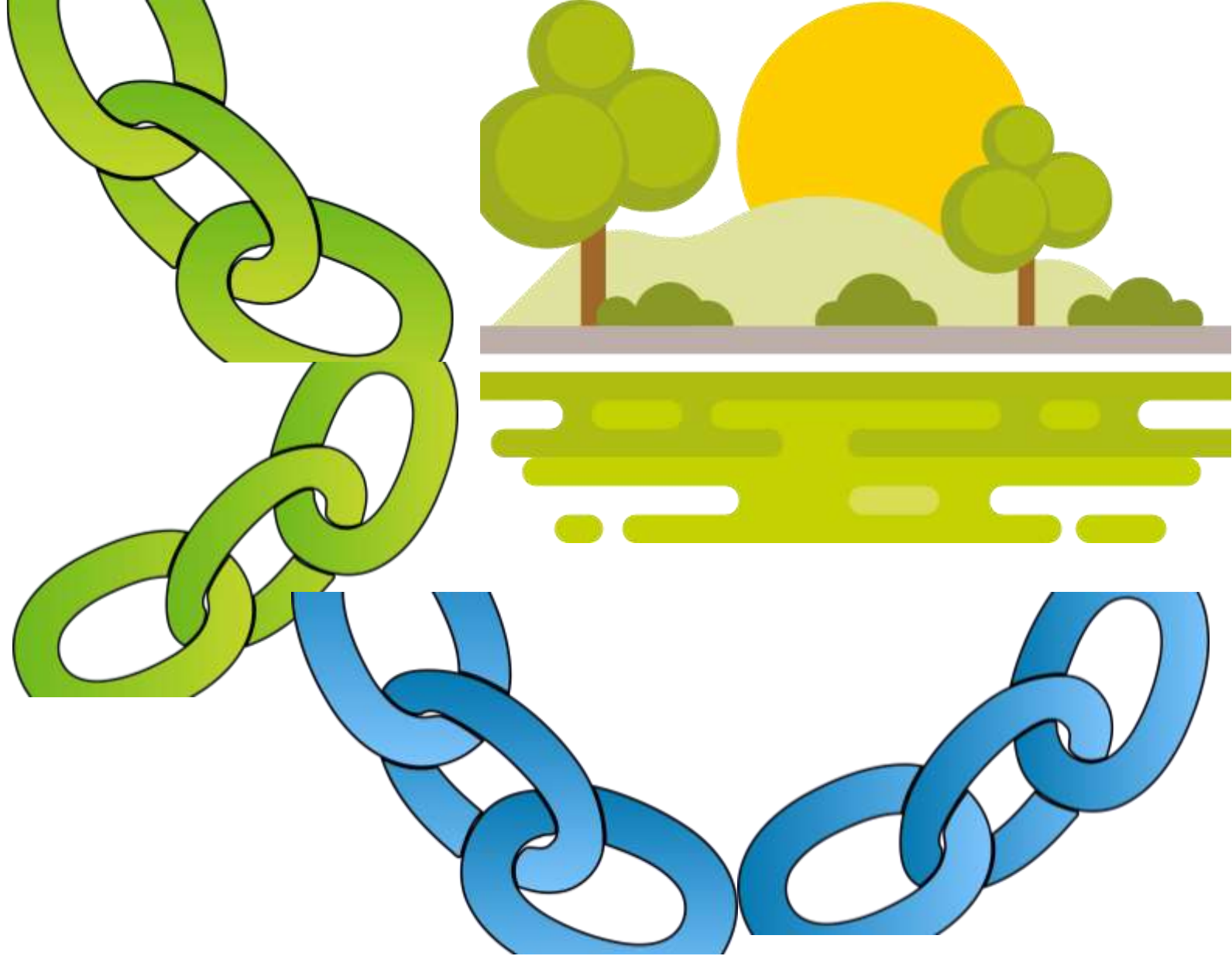
- To improve the landscape, (green and blue) for people and wildlife.
- To make this area stand out as a regional landscape
- To give the Colne Valley Regional Park the evidence to campaign more successfully for protection of this area

What Type of project are we looking for?

- Small or large ie: new signage at a footpath entrance or completely new footpath with signposts and stiles
- Habitat improvements for butterflies or creating a new Nature Reserve
- A pond dipping platform or re-naturalizing a river
- A volunteering opportunity or a new volunteer managed scheme
- New habitat surveys and/or a method to collate all the Valley's survey data.



Linking
Projects
together to
deliver on a
landscape scale



-
- **Fill in your project proposal forms which will be in your pack today and will be emailed to you as well.**
 - **Talk to me if you would like to be more involved or want more information.**



VOTE!

RED: I don't think
my organisation
will propose a
project for
inclusion in this
Lottery Project

BLUE: I think my
organisation could
put forward
projects for
inclusion in this
Lottery Project.

How many people have an idea for a project off the top of their head?



YES

**This time next year we
could all be part of a
Millionaire Project!**

