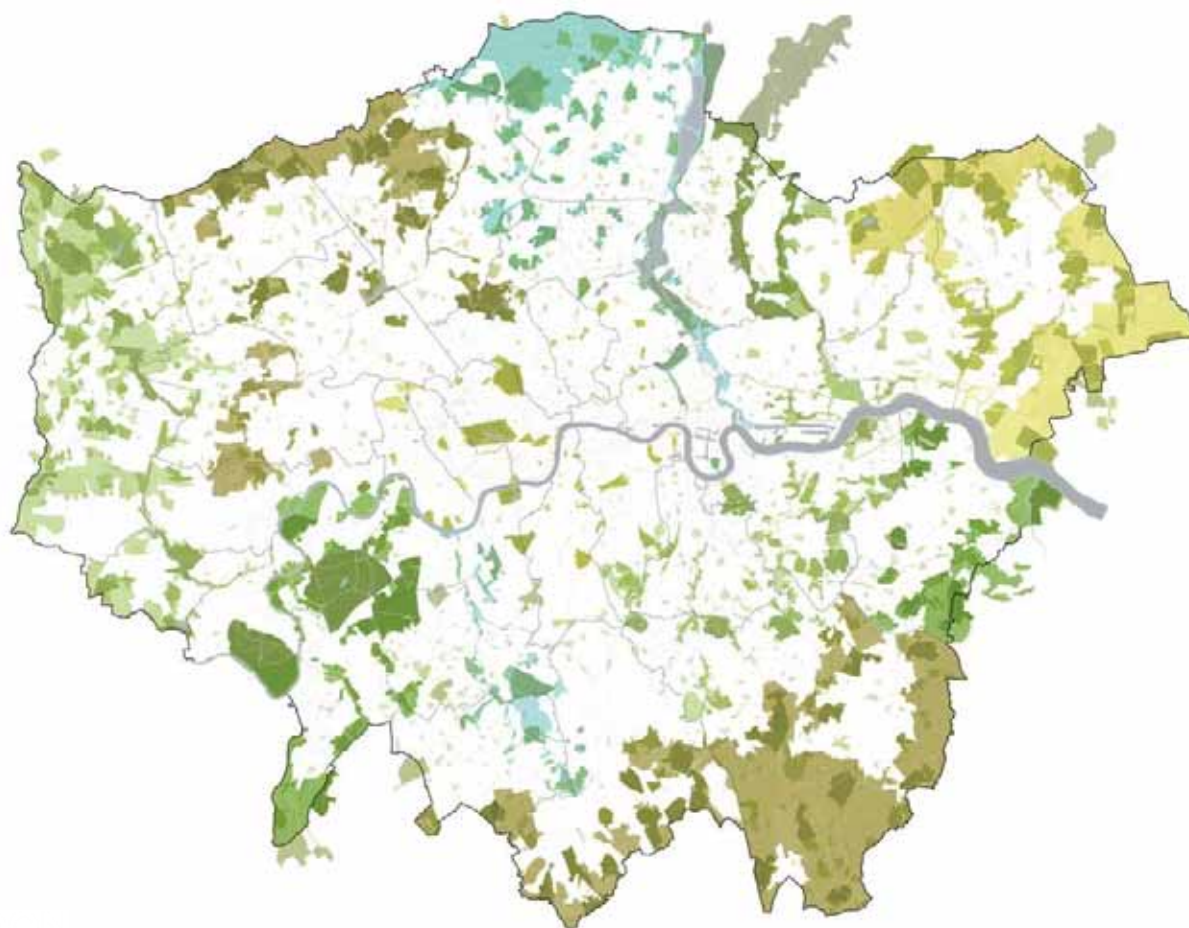


From the Green Belt to the Thames

18 04 23



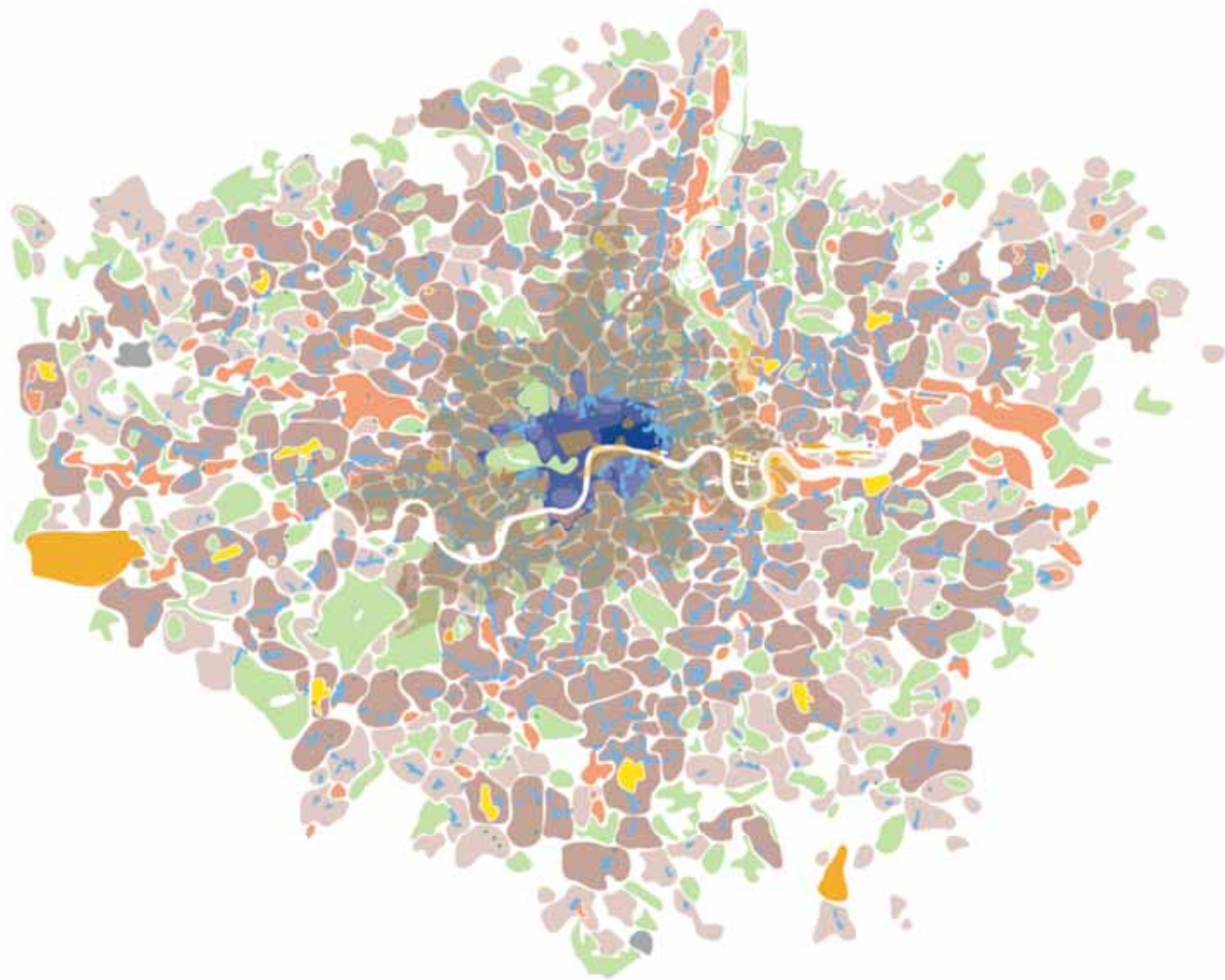
GLA Regeneration

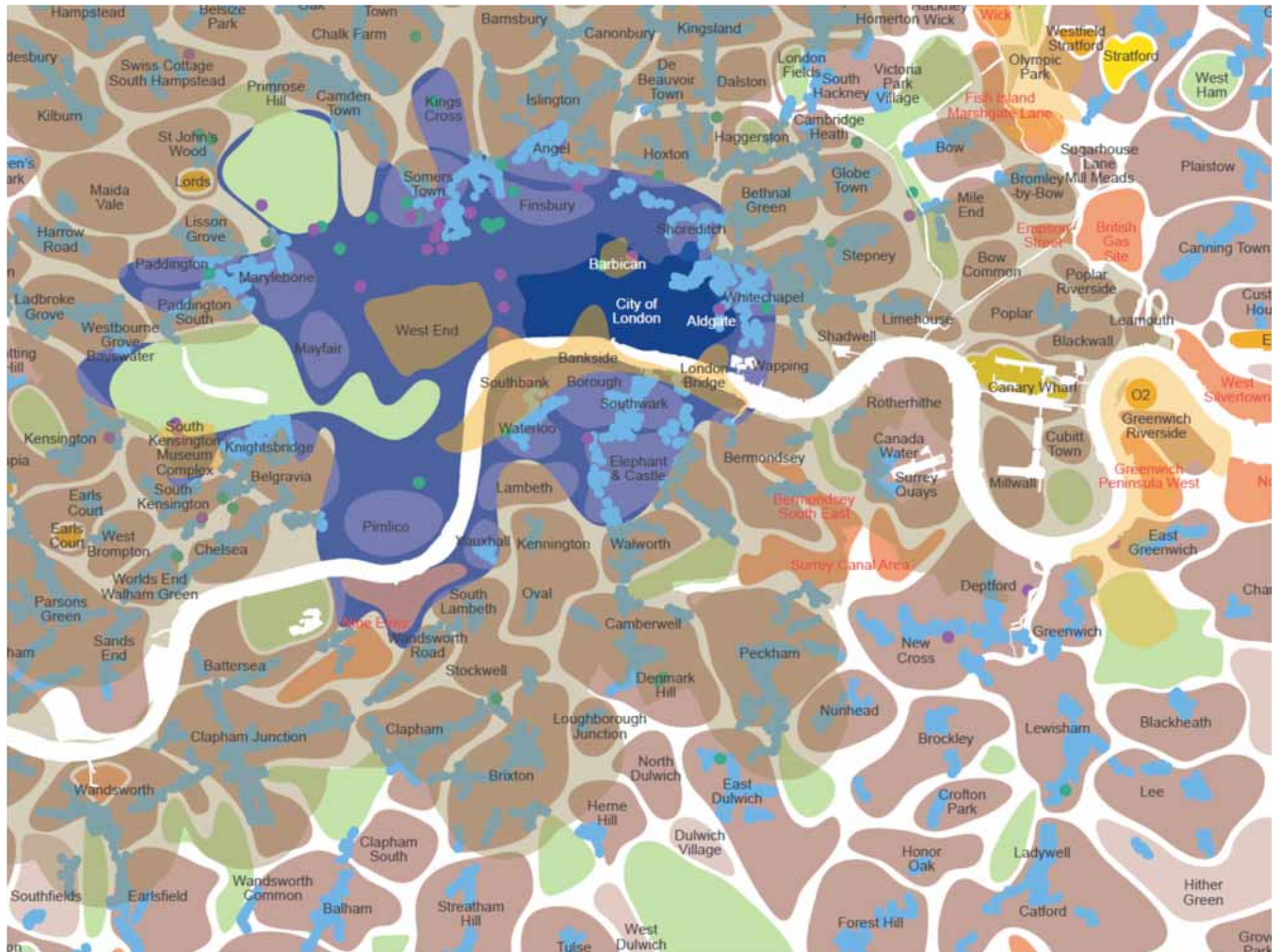
Working on behalf of the Mayor of London as part of the GLA to shape a better city.

Collaborating with almost all London boroughs, Transport for London, and others at every level.

We are a unique team, with a strong reputation and a good record of achievement.

With detailed knowledge of London's places, with area strategy and vision setting capability, design skills, with a web of relationships across the city.





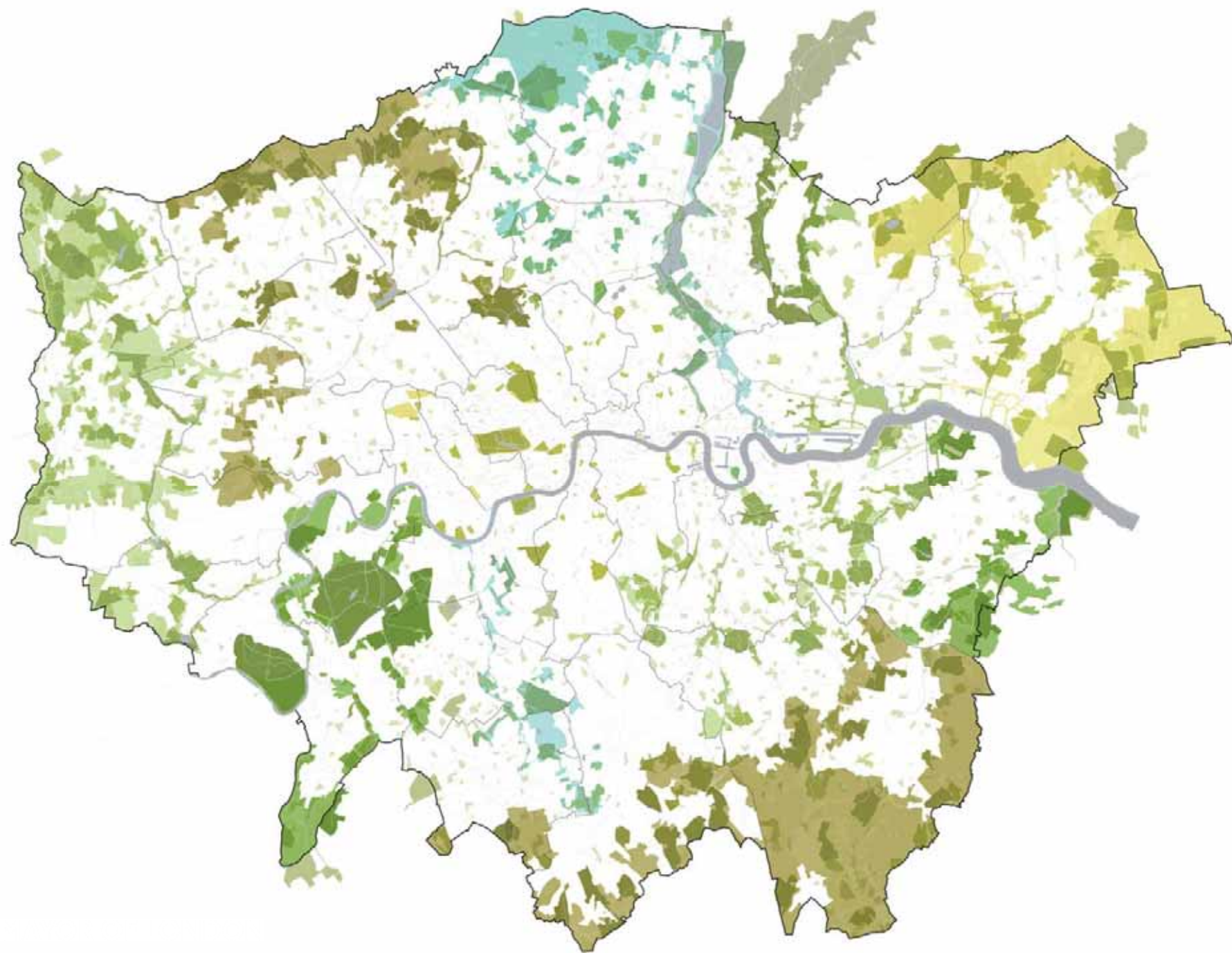


All

London

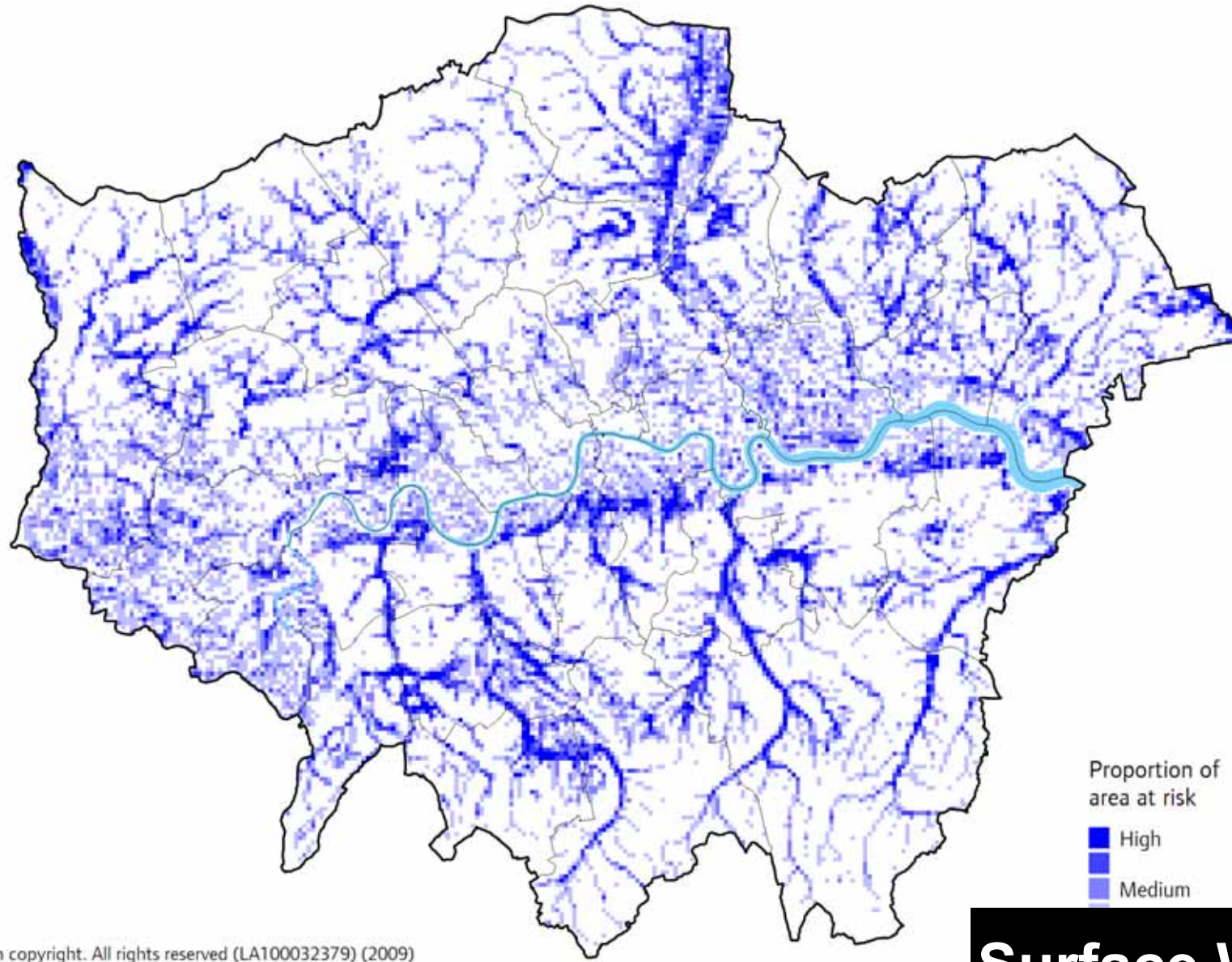
Green

Grid



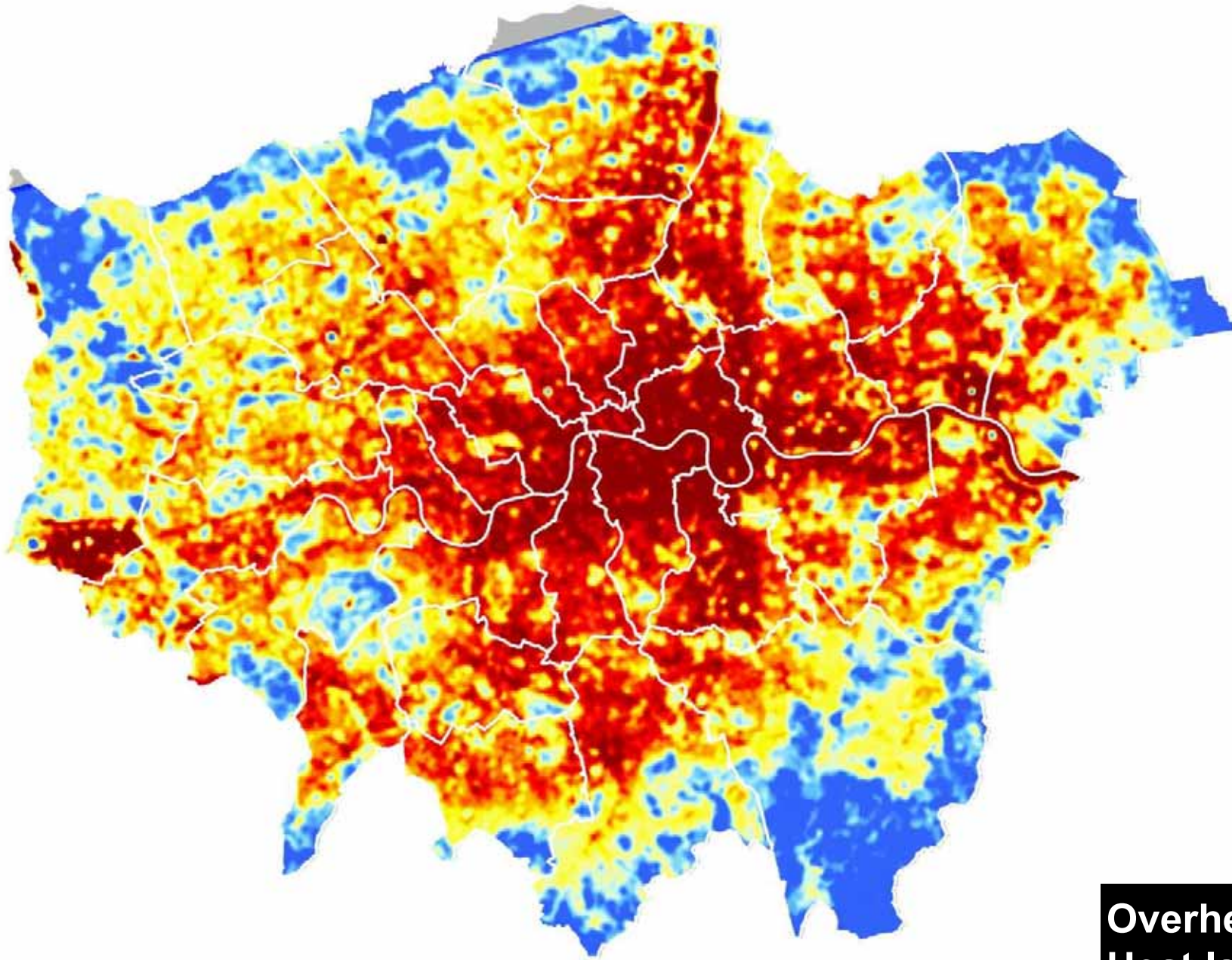
London's Changing Climate

680,000 properties at risk of surface water flooding

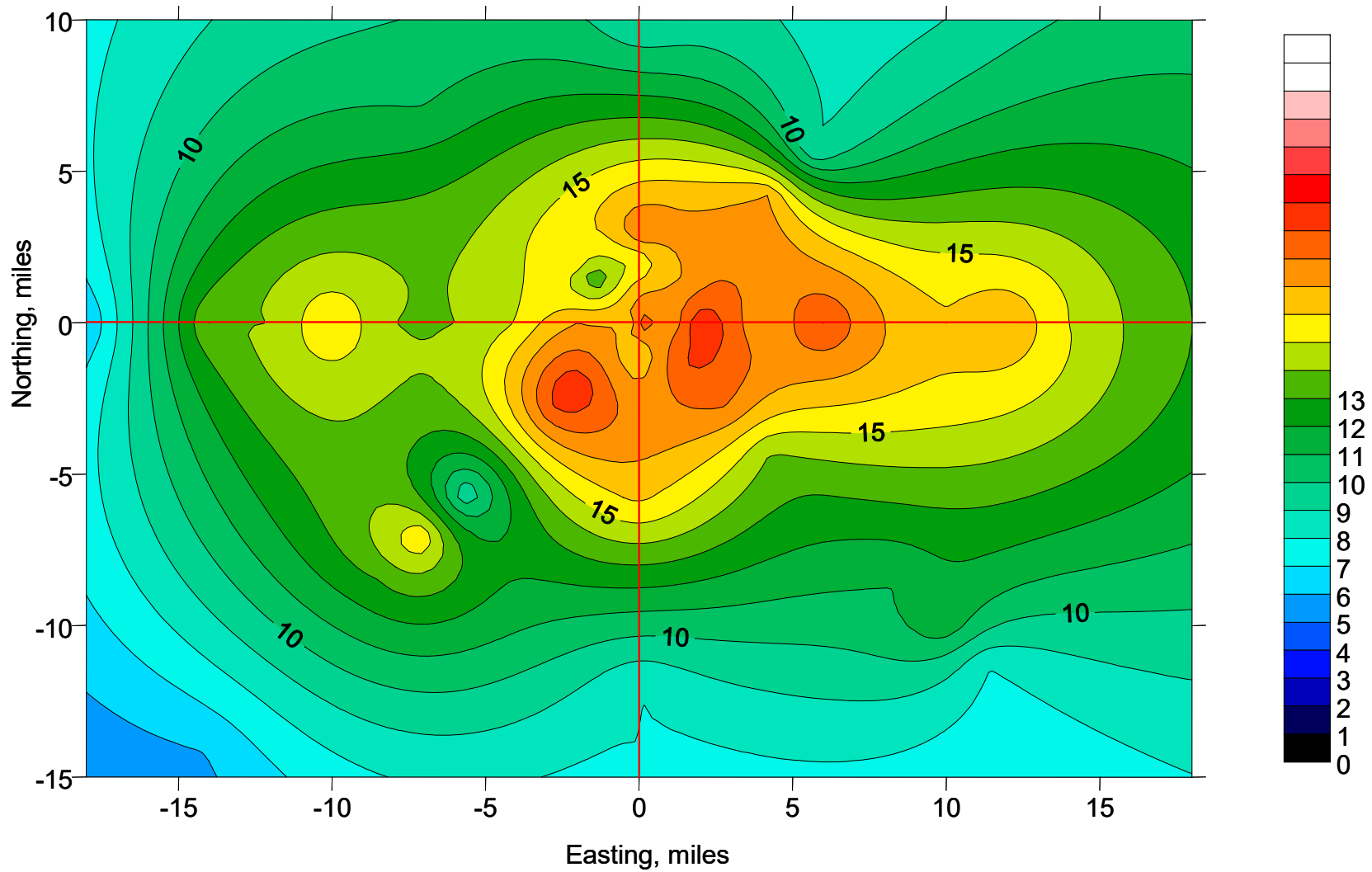


in copyright. All rights reserved (LA100032379) (2009)

Surface Water



**Overheating +
Heat Island.**



Green Space as Infrastructure

The Opportunity





London's green network



Landscape and open spaces have always played a key role in London's urban development

Figure 5.7
Areas deficient in public open space provision
at the Metropolitan Level

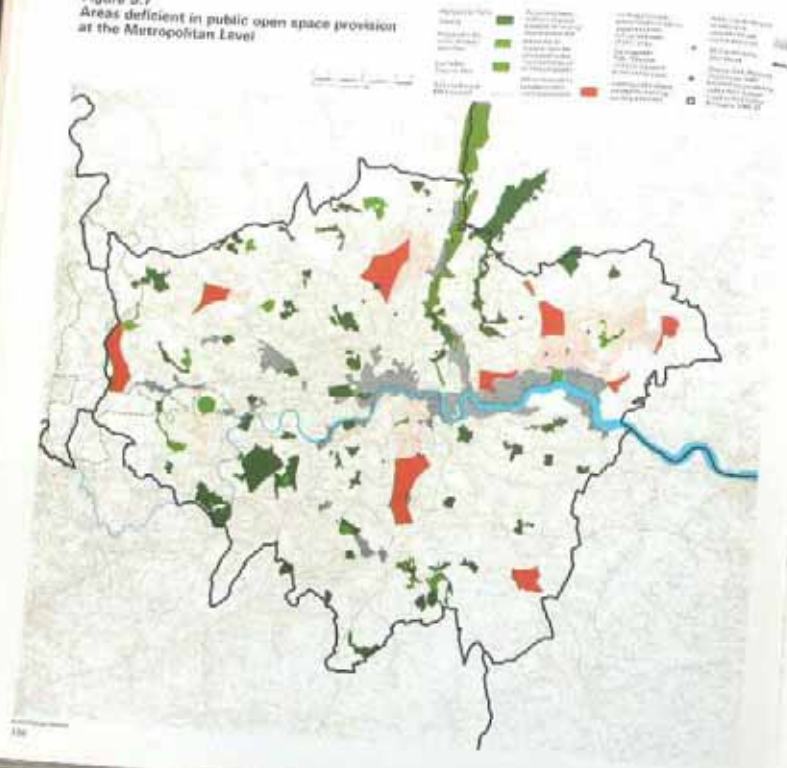
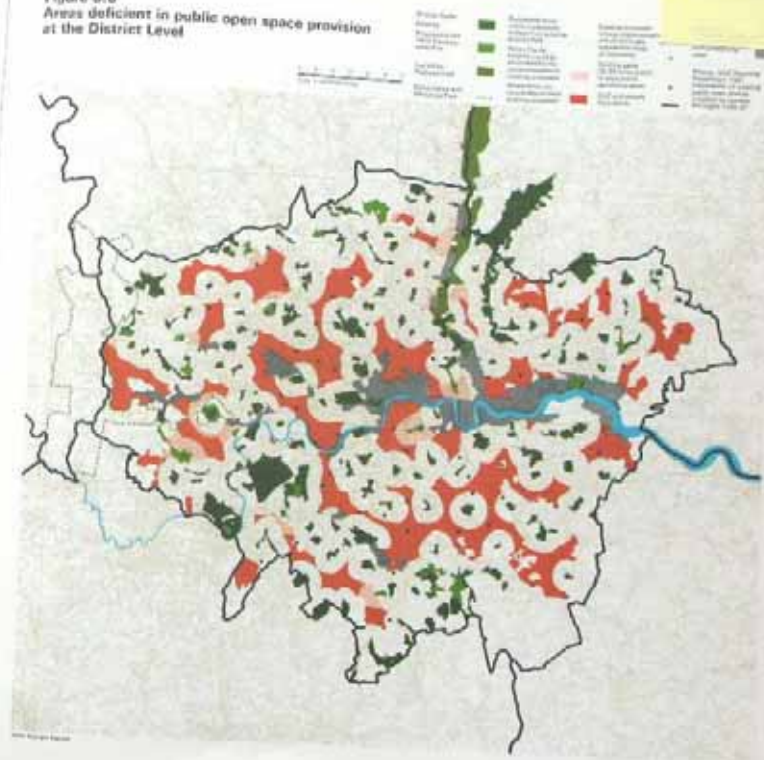


Figure 5.8
Areas deficient in public open space provision
at the District Level



East London



East London







Beginnings of Renewal











East London Green Grid Vision

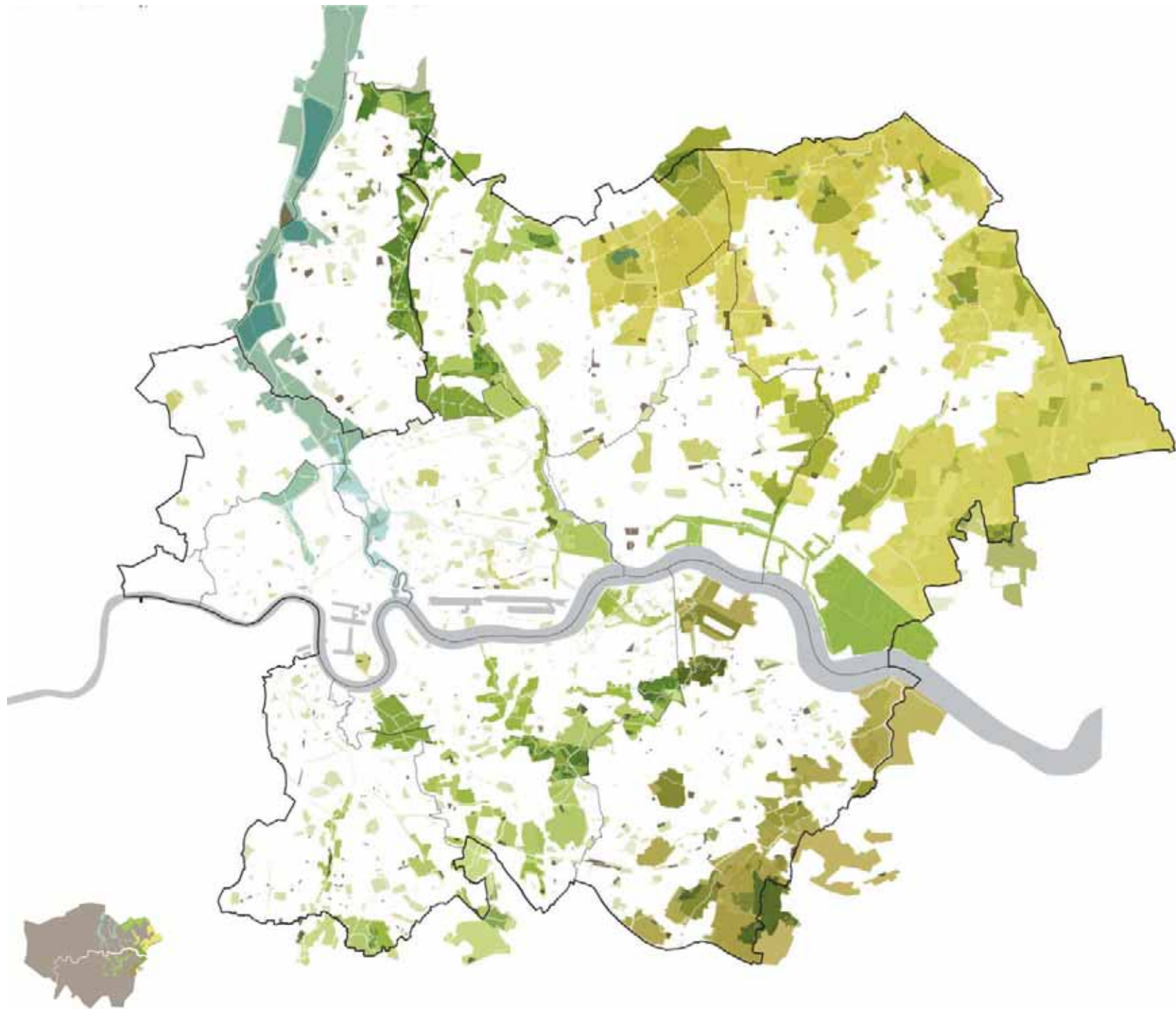


East London Green Grid

Primer

"The East London Green Grid will offer scope for solitude and sociability, physical activity and engagement with nature. By catering for a range of expert advice and by addressing environmental challenges that weaves together the threads of East London –

**A network of interlinked,
multi-purpose open
spaces with good
connections to the areas
where people live and
work, public transport,
the Green Belt and the
Thames.**



Objectives



Access to Open Space



Access to Nature



Managing Flood Risk



Making Connections



Distinctive Destinations



Healthy Communities



Productive Landscapes



Skills and Training

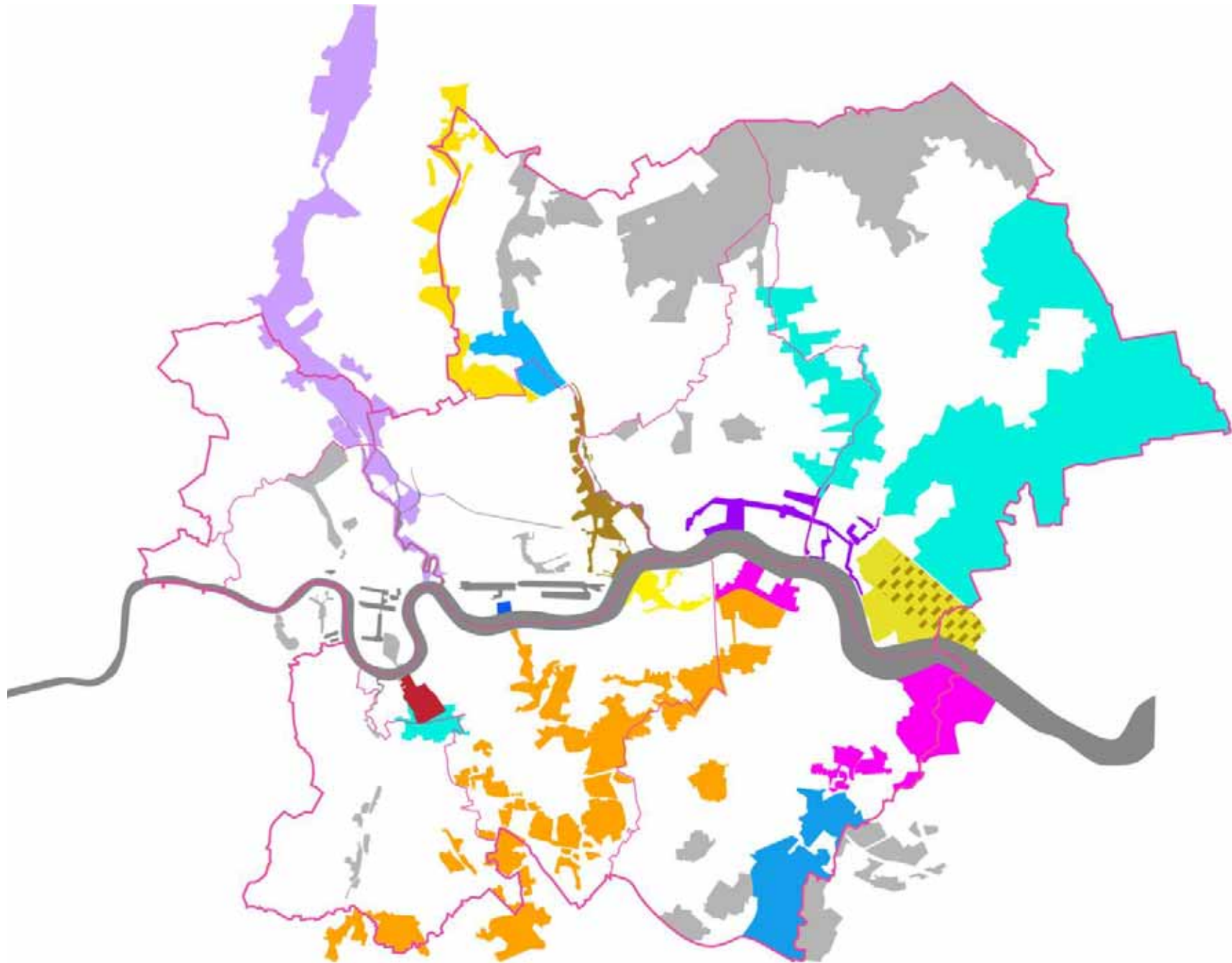
East London Green Grid Forward Strategy

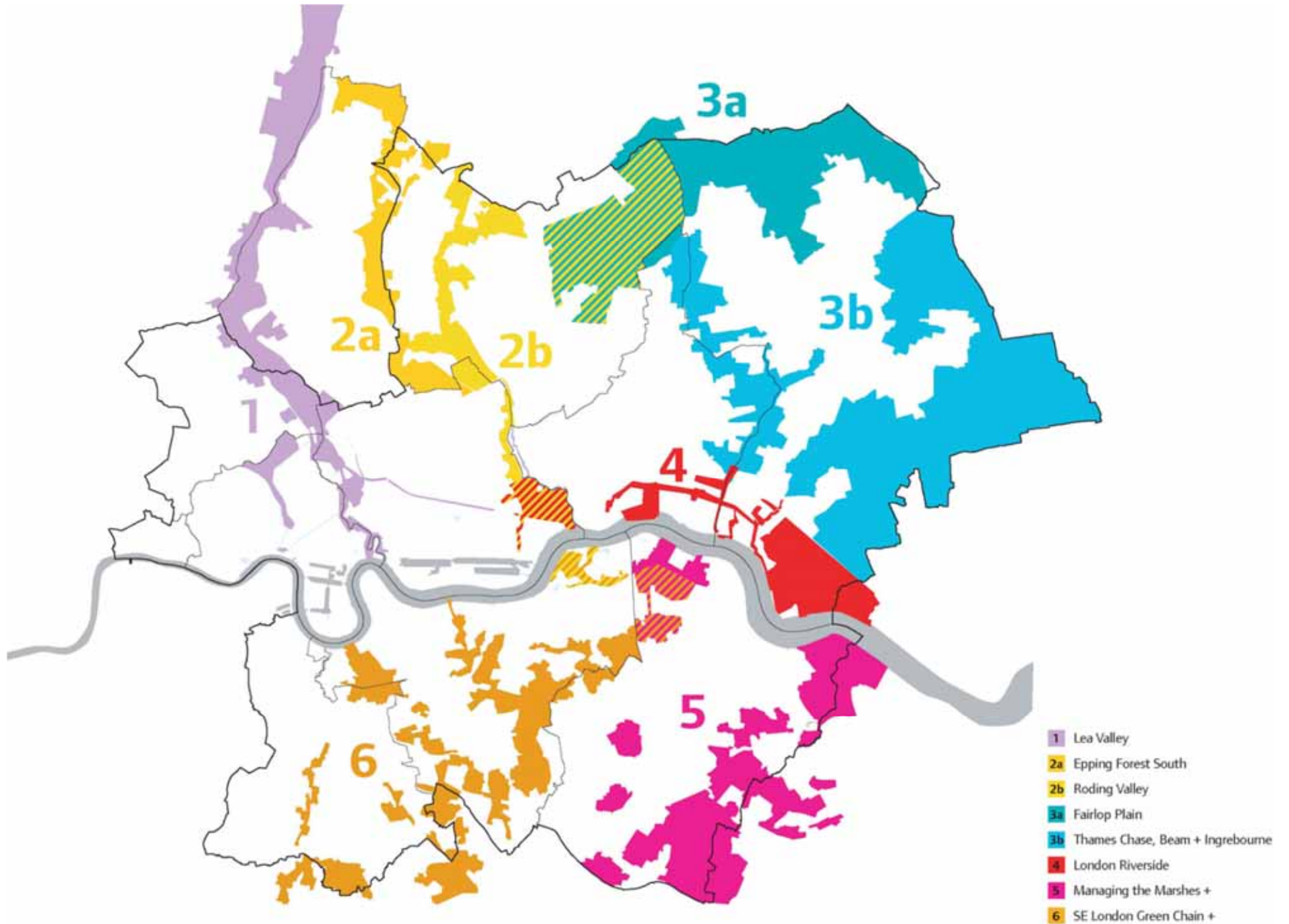
1 Policy: more supportive policy at strategic and local levels.

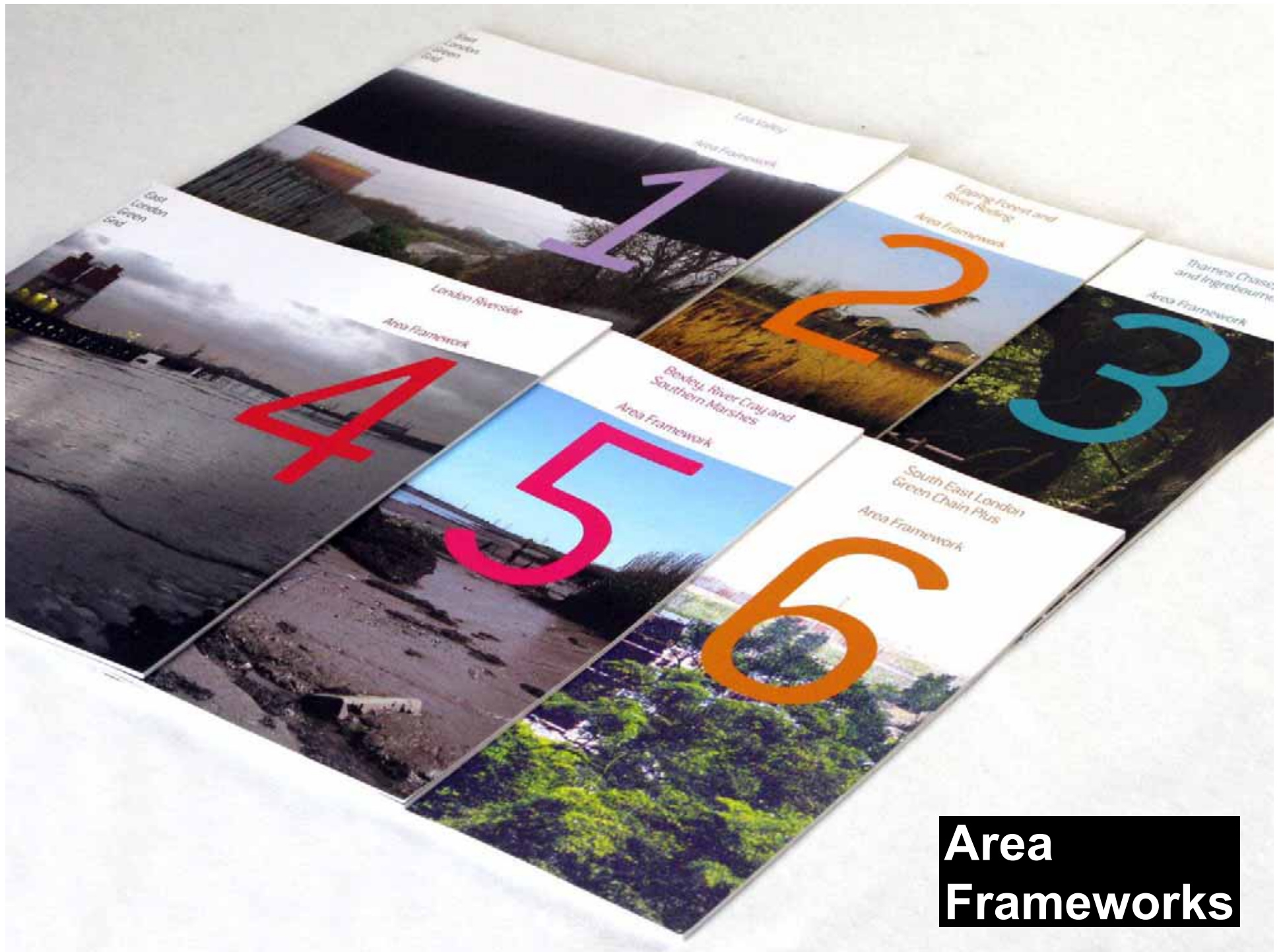
2 Governance: development of enhanced project governance structures.

3 Area Frameworks: Development of the ELGG Vision at the landscape scale.

4 Strategic Projects: definition of a first phase of strategic project delivery.





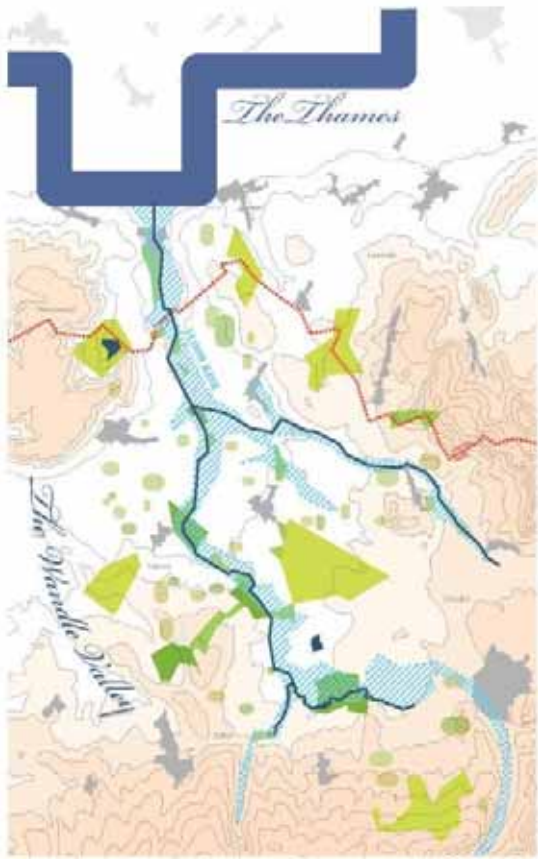


Area Frameworks

Area strategy



Strategic context



Area description



Strategic vision

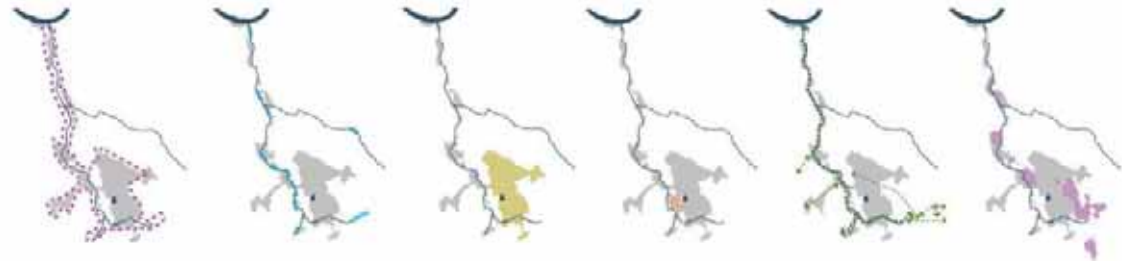
Opportunities

Area Strategy – Opportunities

A number of strategic opportunities have been identified within the Wandie Valley Green Grid area. These are significant opportunities - rooted in real or aspirational projects which are spatially specific - which have the potential to deliver the Area Vision and Objectives described on previous pages.



Area Strategy – Opportunities



1

To develop a framework for the creation of a new Regional Park - as a vehicle to improve the management, funding and identity of open space within the Wandie Valley.

2

To improve the ecological and environmental value of the River Wandie through restoration projects, habitat enhancement and species re-introduction, and projects which seek to mitigate flood risk.

3

To create a 200 hectare Park at Beddington Farmslands through the reclamation of land used for gravel extraction and landfill tipping, linking Beddington Park with Mitcham Common.

4

To develop an exemplar sustainable neighbourhood at Hackbridge - with low carbon development, closely integrated with the River Wandie through improved cycle and pedestrian connections, and energy generation associated with river restoration projects.

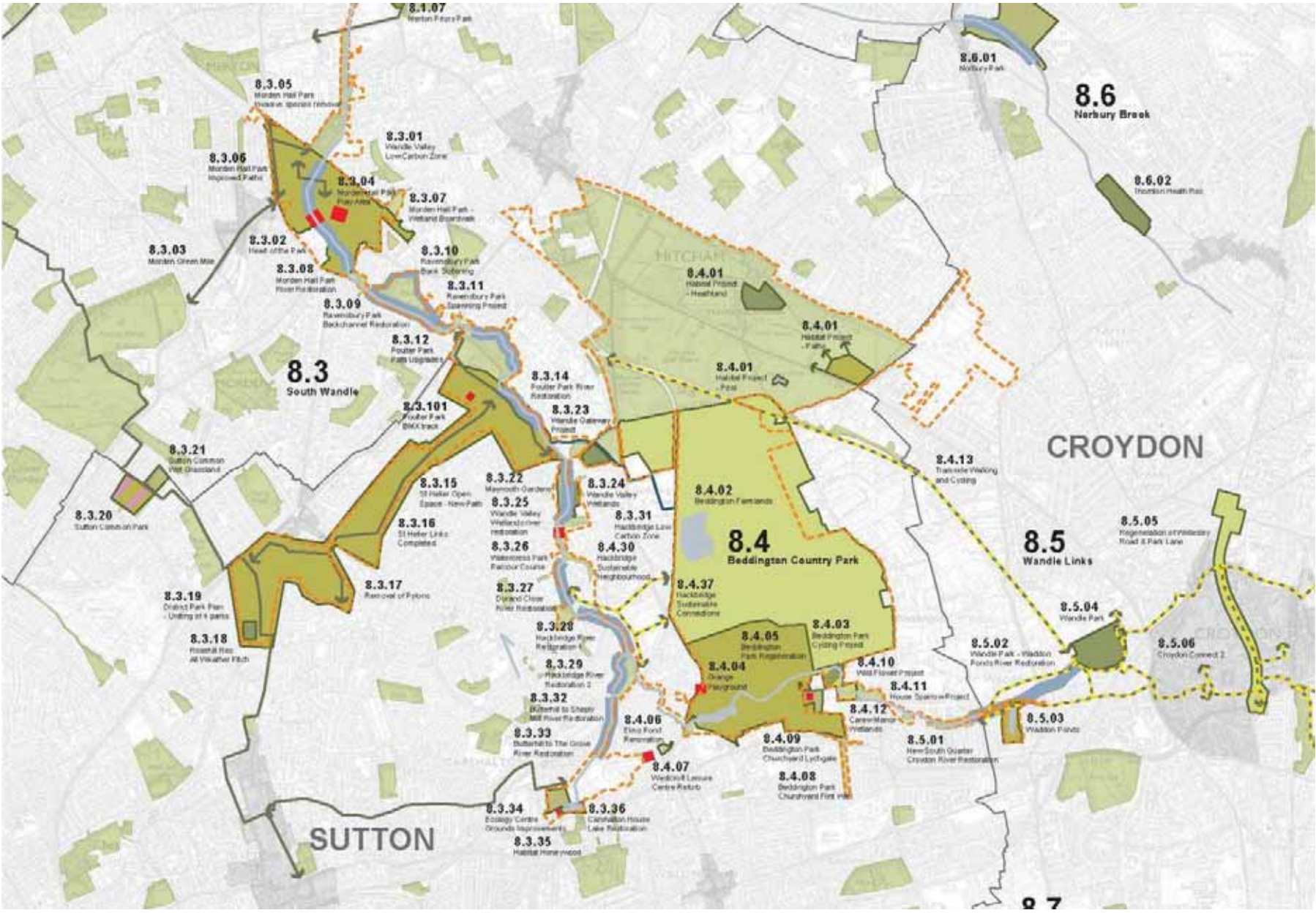
5

To create improved cycle and pedestrian connections to the Wandie Valley from the surrounding areas - through significant open spaces such as the St Heliers - Pouter Park link, and a suite of projects connecting the River Wandie to Croxson Town Centre.

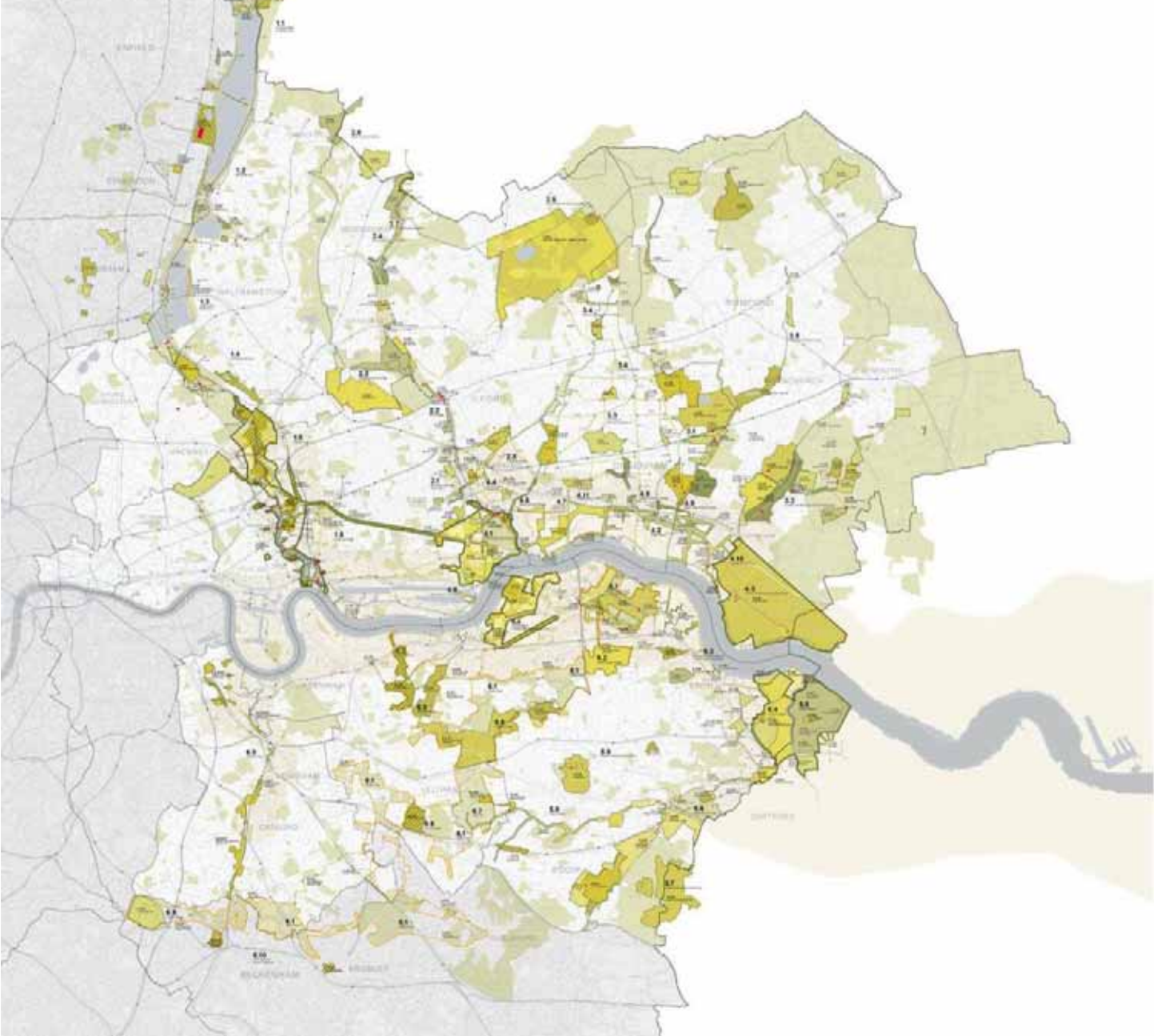
6

To develop a mutually beneficial relationship between the open space network and industrial space within the Wandie Valley - from facilitating access improvements through to ensuring a unique sense of place which can help to enliven and enrich the identity of the Regional Park.

Project map



Projects



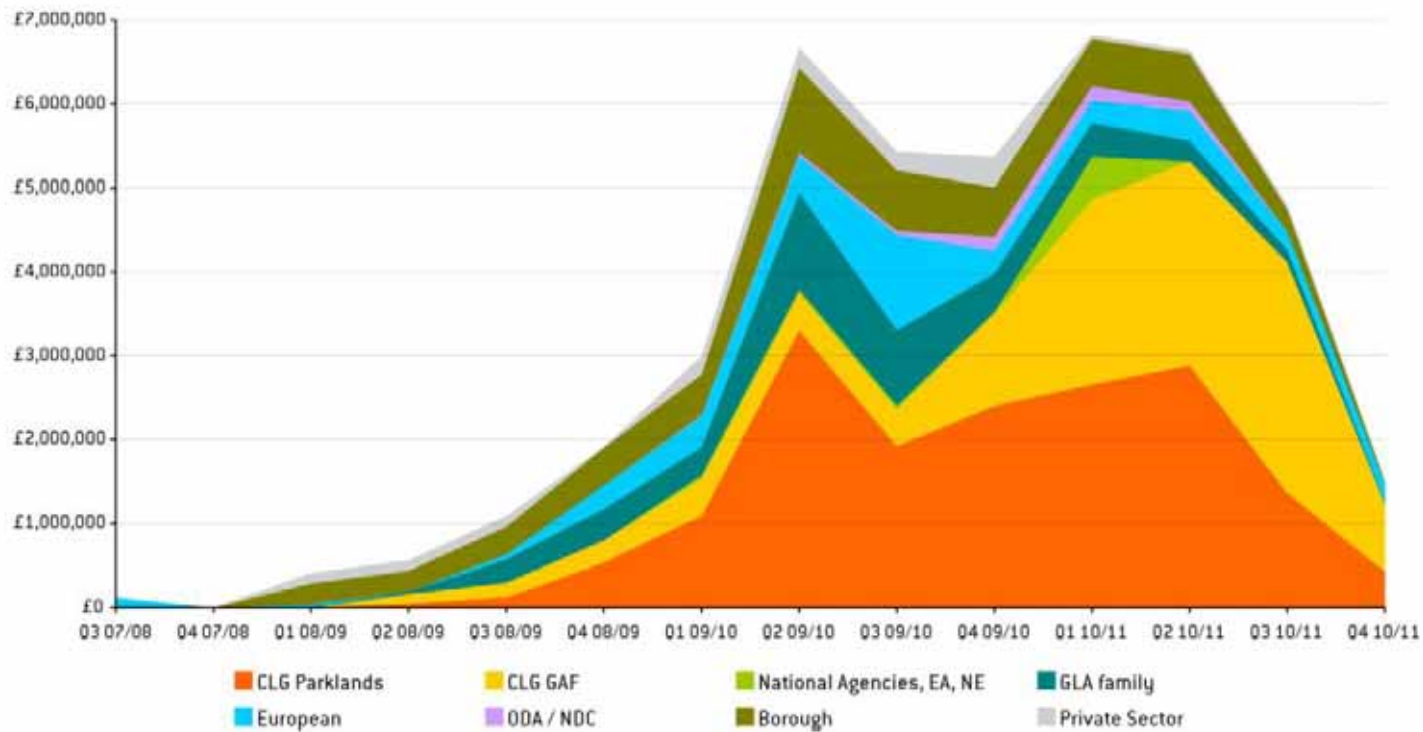
Over 300 green infrastructure projects are being prepared for delivery by public agencies or as an integral part of developments.

These are organised into 50 thematic and geographic clusters to link and coordinate the different delivery partner's efforts, in the six ELGG Area Frameworks.

Partners have defined a first phase of over 100 projects to be pushed forward over the next 3-5 years.

Plan





CLG Parklands request
£16.7 million

Match funding:
£27.5 million (62%)

Total Programme Value:
£44.3 million

Intervention rate:
38%

Programme management fee
£100 k p.a.

Business planning

Living with the Marsh

**Rainham to the River – Landroom / Peter Beard,
East Architecture and Landscape,
Kinnear Landscape Architects**



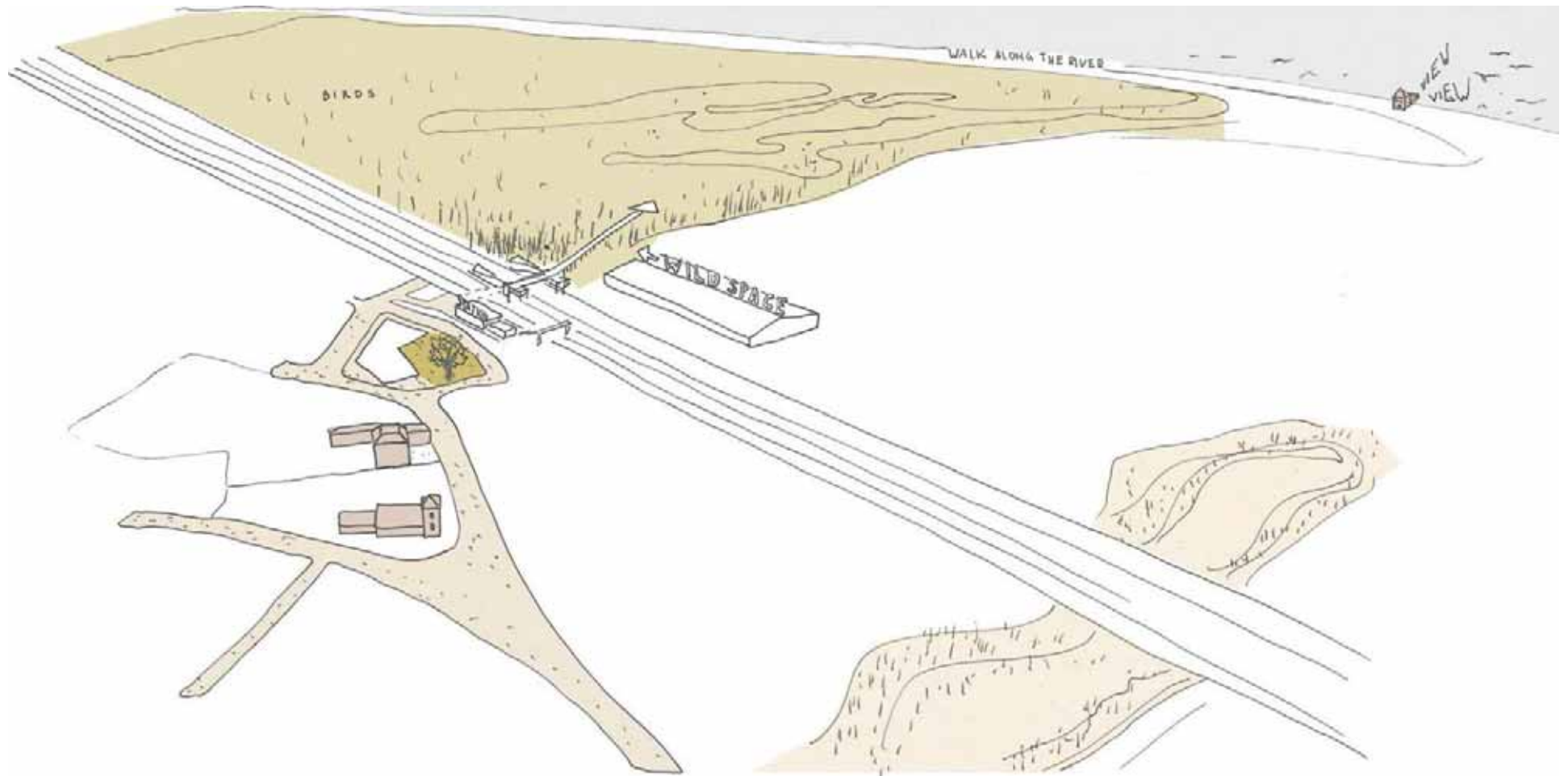


Rainham Marshes



Rainham Marshes





Rainham





MARSH TRACKWAY

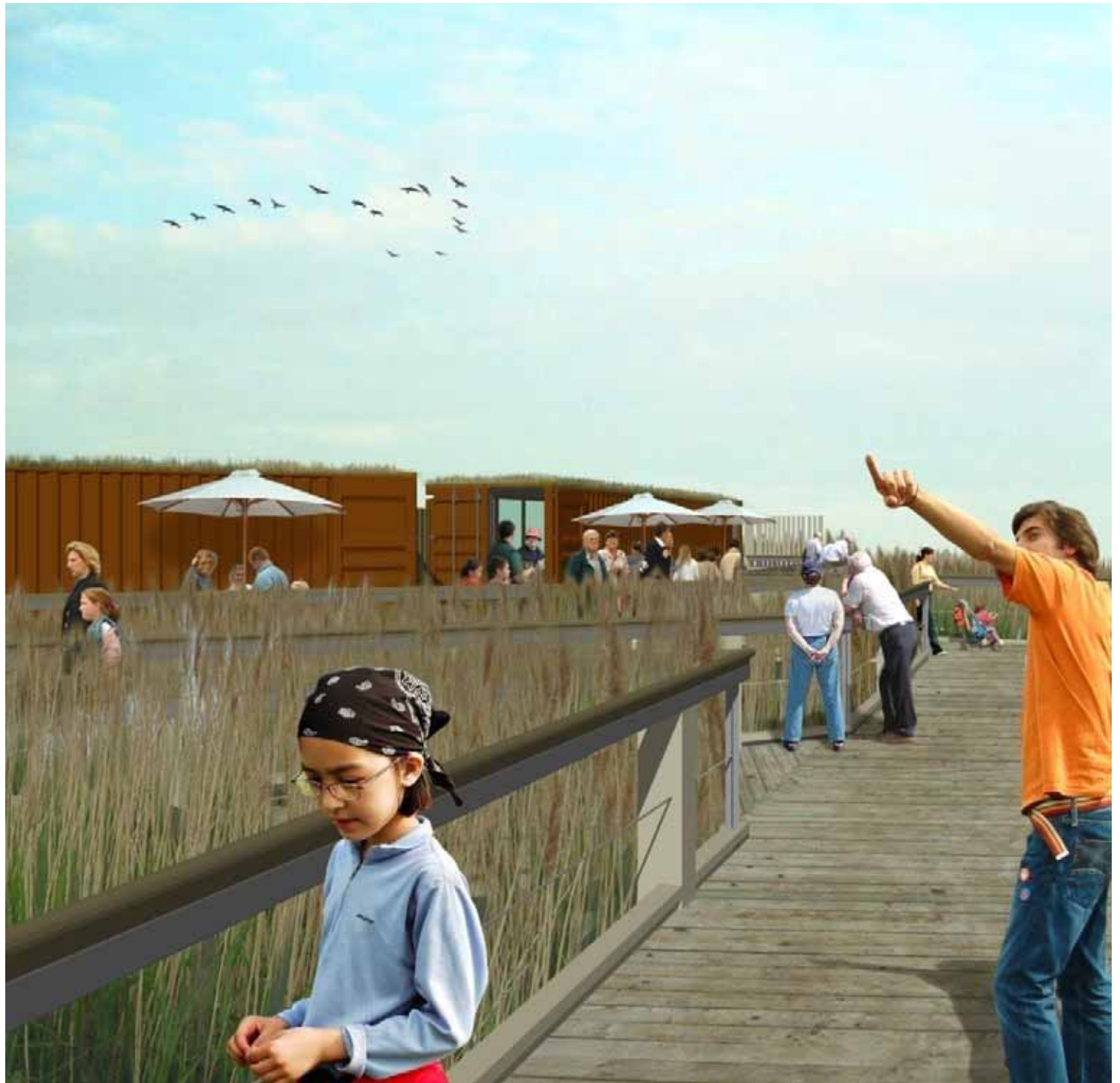
















10.

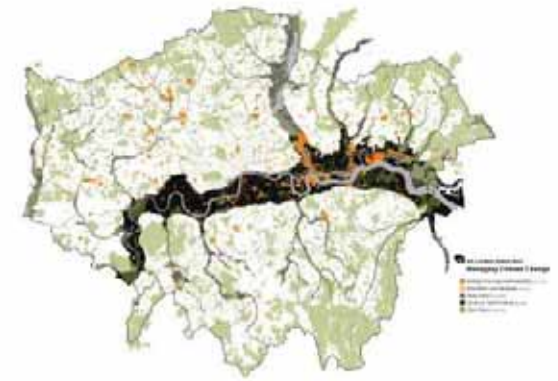
All London Green Grid



Access to open space



Access to nature



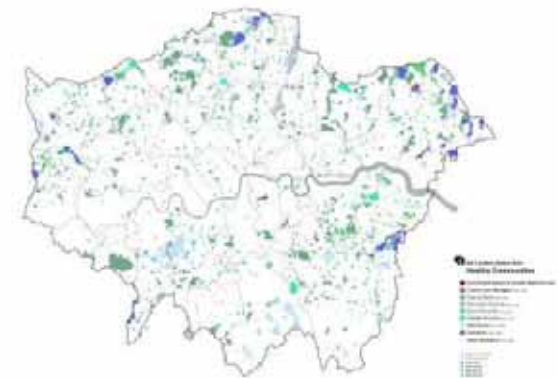
Managing climate change



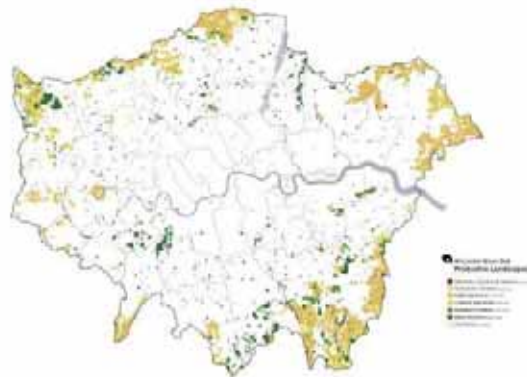
Making connections



Distinctive destinations



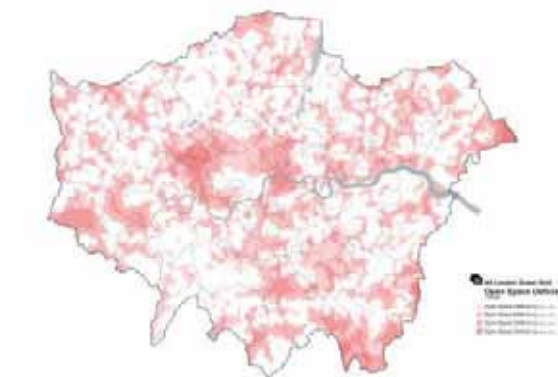
Healthy communities



Productive landscapes



Ecological and landscape zone



Access OpenSpace deficiency

ALL London green grid (2012)



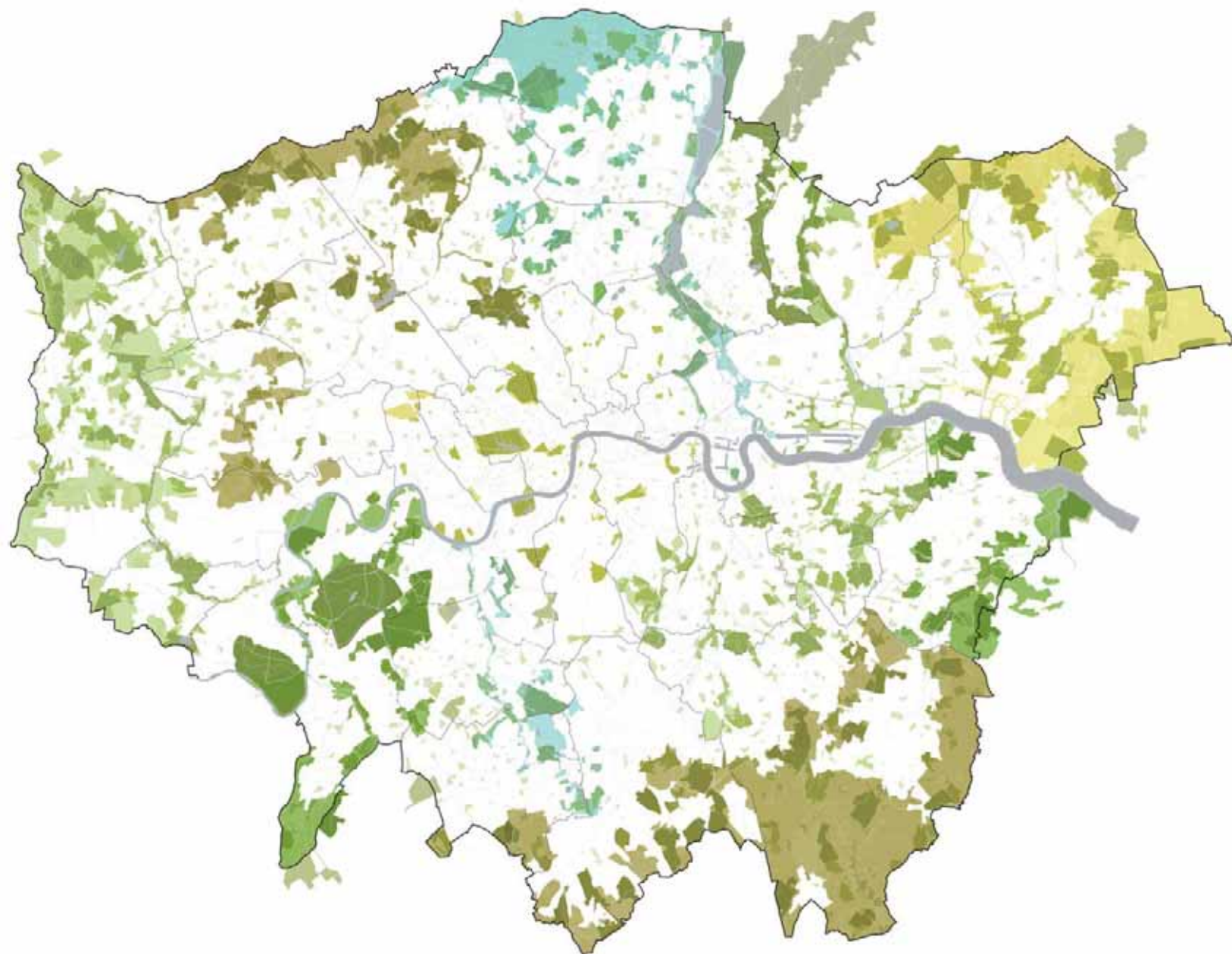
GREEN INFRASTRUCTURE AND OPEN ENVIRONMENTS: THE ALL LONDON GREEN GRID

SUPPLEMENTARY PLANNING GUIDANCE

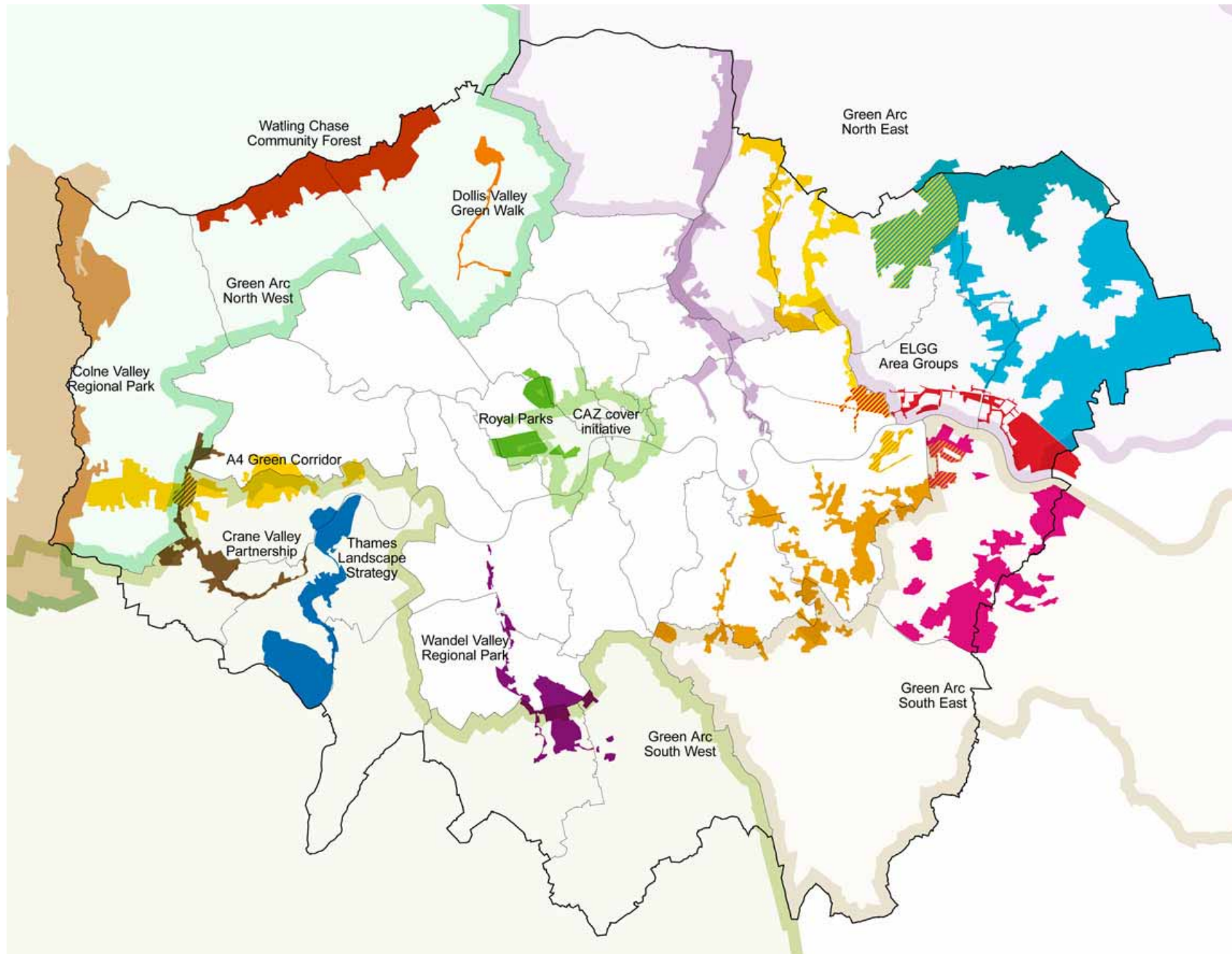
MARCH 2012
LONDON PLAN 2011
IMPLEMENTATION FRAMEWORK

MAYOR OF LONDON

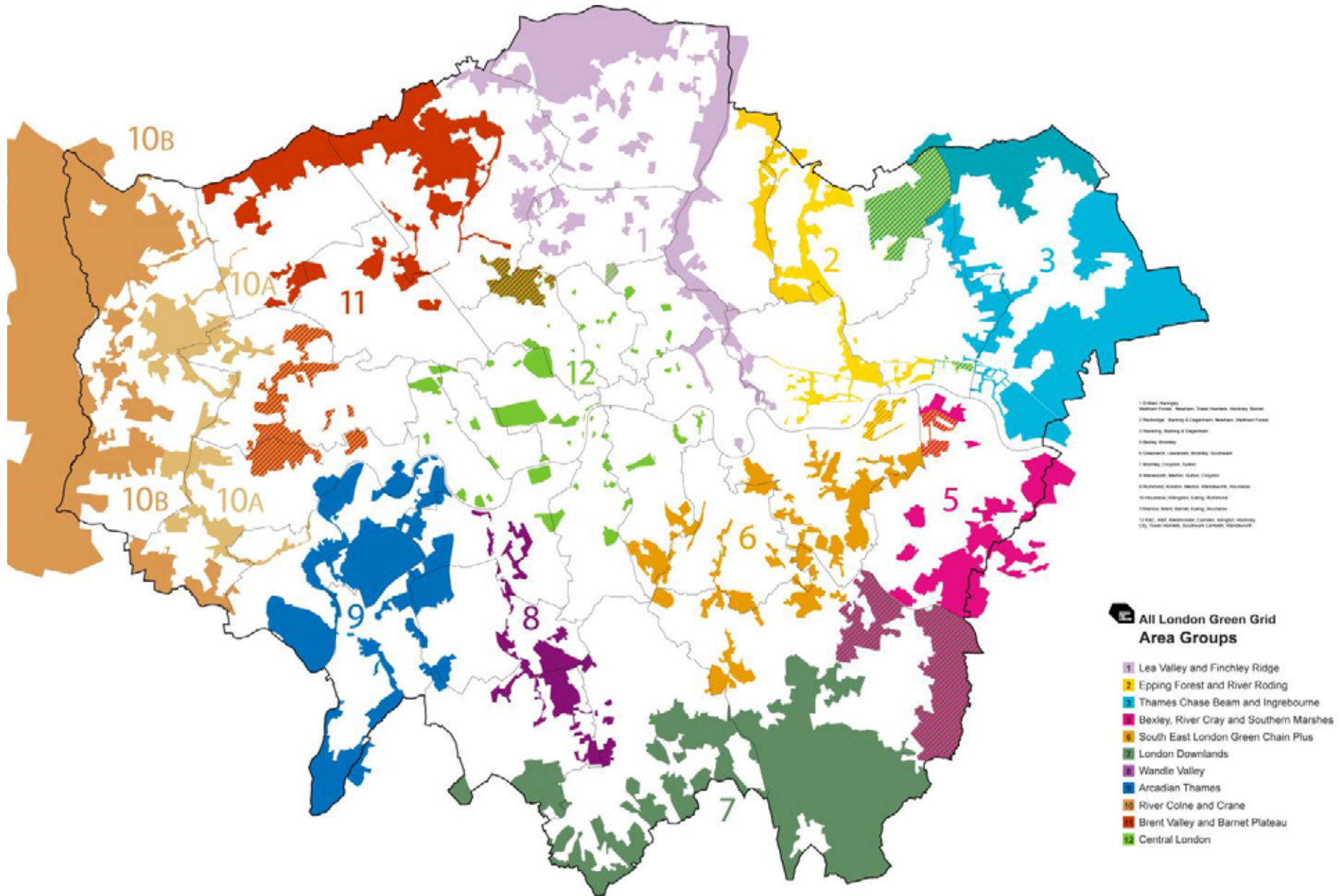
<https://www.london.gov.uk/what-we-do/environment/parks-green-spaces-and-biodiversity/green-infrastructure/all-london-green-grid>



Existing strategic partnership initiatives



Governance All London Green Grid







12.

Continued Investment.

MARKET GARDEN CITY, WOOD GREEN



THE FORGE HAINAULT COUNTRY PARK



CAPEL MANOR COLLEGE MOTTINGHAM CAMPUS



UPDATING THE ALGG – GLA POLICY CONTEXT



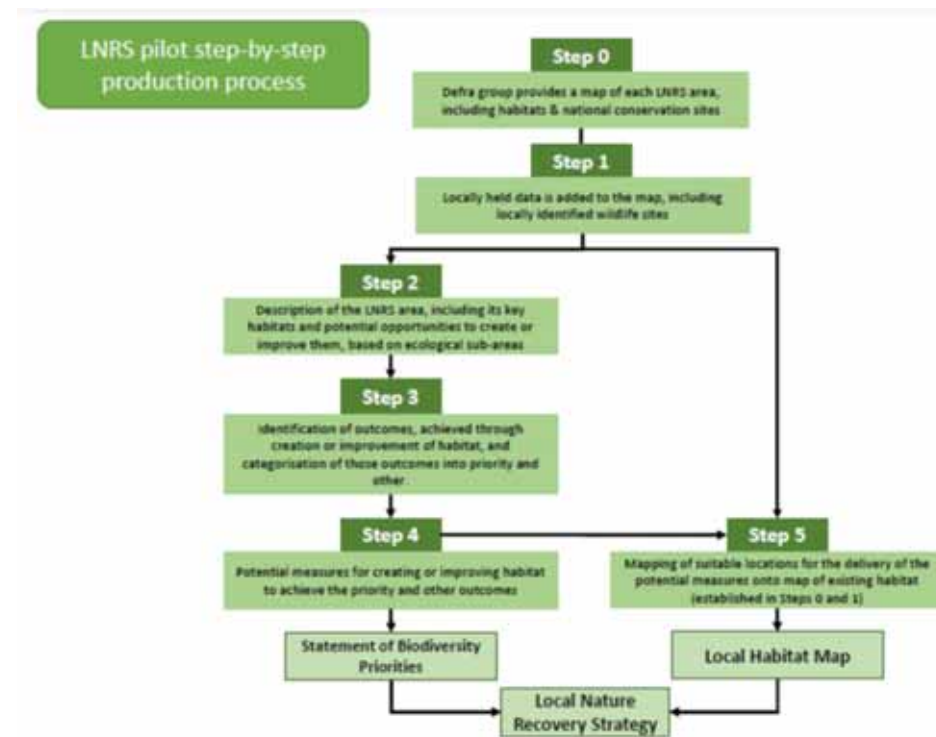
Policy G1 Green infrastructure

- A London's network of green and open spaces, and green features in the built environment, should be protected and enhanced. Green infrastructure should be planned, designed and managed in an integrated way to achieve multiple benefits.
- B Boroughs should prepare green infrastructure strategies that identify opportunities for cross-borough collaboration, ensure green infrastructure is optimised and consider green infrastructure in an integrated way as part of a network consistent with Part A.
- C Development Plans and area-based strategies should use evidence, including green infrastructure strategies, to:
 - 1) identify key green infrastructure assets, their function and their potential function
 - 2) identify opportunities for addressing environmental and social challenges through strategic green infrastructure interventions.
- D Development proposals should incorporate appropriate elements of green infrastructure that are integrated into London's wider green infrastructure network.

8.1.3 To help deliver on his manifesto commitment to make more than half of London green by 2050, the Mayor will review and update existing Supplementary Planning Guidance on the All London Green Grid – London's strategic green infrastructure framework – to provide **guidance** on the strategic green infrastructure network and the preparation of green infrastructure strategies.

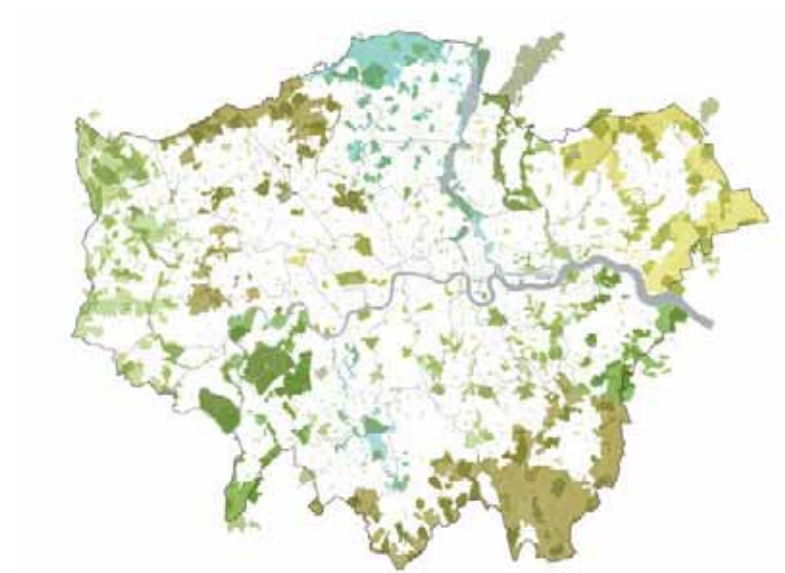
UPDATING THE ALGG - CHANGING CONTEXT

- Environment Act 2021
 - Local Nature Recovery Strategy *a new mandatory system of spatial strategies for nature...designed as tools to encourage more coordinated practical and focused action and investment in nature.*
- Biodiversity Net Gain
- Access to green space and nature
 - Mayor's commitment: 10 minute walk to green space
 - Natural England GI standards
- Climate adaptation – heat, flooding
- Health benefits of GI



OPPORTUNITIES AND NEXT STEPS

- **What is a reframed ALGG?**
- A Green Infrastructure Strategy for London
 - Strategic vision
 - Access to green space
 - Nature
 - Climate resilience
 - Health
 - Need – analysis of data (GI Focus map)
 - Barriers
 - Mechanisms
 - Area plans
- Workshops - cross borough working
- Output - interactive, dynamic document, maps?
- **What should it look like? Feedback welcome!**



Ends