



Working to improve the Green Belt on the edge of London and four counties

**Stewart Pomeroy
Colne Valley Managing Agent
Groundwork South**



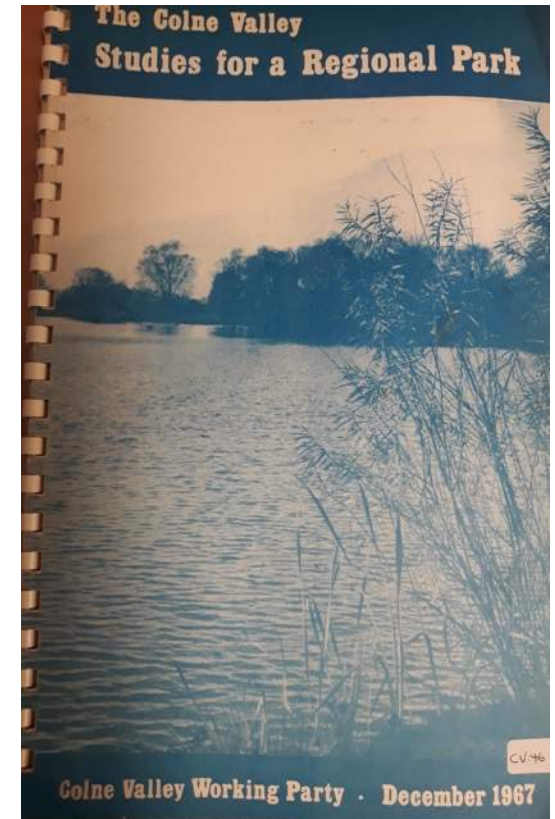
Introduction

Where have we come from?

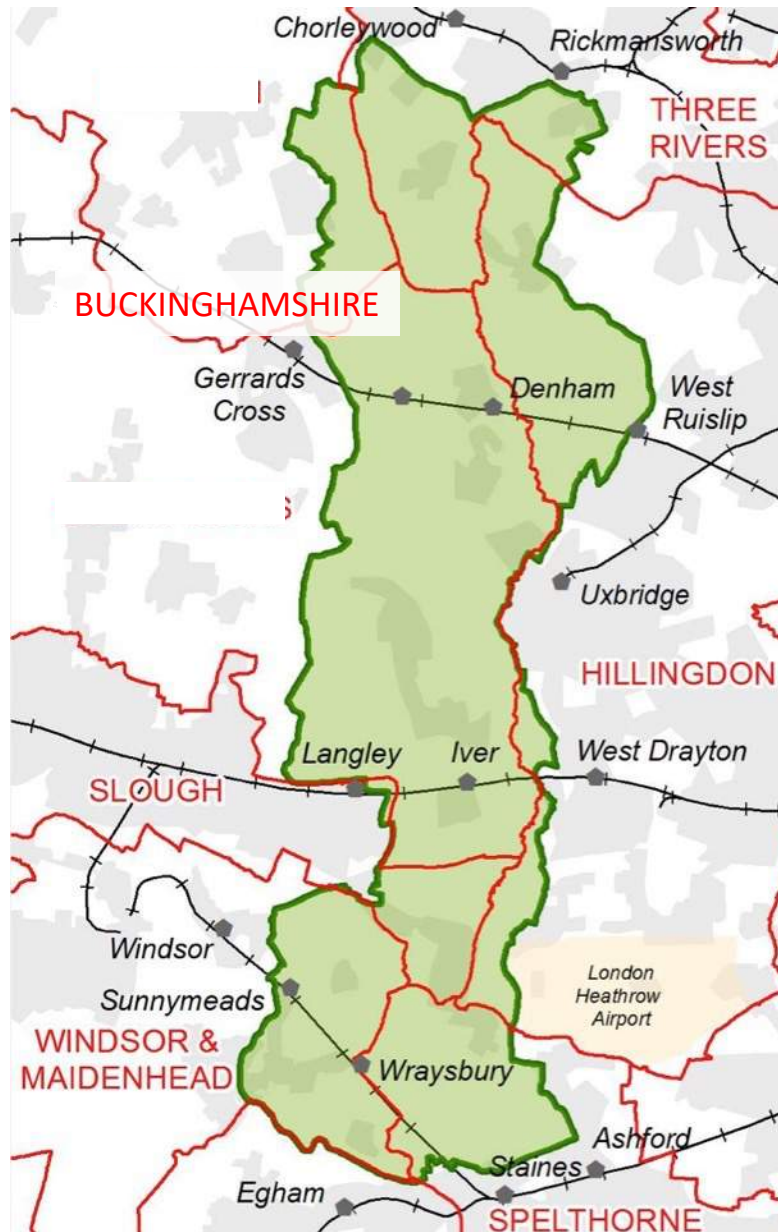
Where are we now?

Where are we going?

Require **Immediate, Imaginative & Tangible step change** in how landscape is supported, managed and cared for



Colne Valley Regional Park



43 square miles

>3M people within 10 miles

>70 lakes + 200km rivers/canals

100's of green spaces, 5 country parks, 20 Nature Reserves, 13 SSSI's

270km of public rights of way

CVRP - key to fulfilling the positive aspects of Green Belt policy

Key to physical and mental health, biodiversity & farming

Local, Regional & National importance

Most pressured part of the (inner) Green Belt



Landscape
Recreation



Countryside
6 OBJECTIVES
Rural Economy



Biodiversity
Community



Members

Local Authorities

Buckinghamshire Council
Chalfont St Peter Parish Council
Colnbrook with Poyle Parish Council
Denham Parish Council
Fulmer Parish Council
Horton Parish Council
The Ivers Parish Council
London Borough of Hillingdon
R B Windsor & Maidenhead
Slough Borough Council
Spelthorne Borough Council
Surrey County Council
Wexham Parish Council
Wraysbury Parish Council

Charities

Angling Trust
Buckinghamshire Conservation Trust
Chiltern Open Air Museum
Chiltern Society
Groundwork East
Groundwork South
Herts & Middx Wildlife Trust
Hillingdon Outdoor Activity Centre
London Wildlife Trust
National Trust
Rickmansworth Waterways Trust
Surrey Wildlife Trust
Sustrans
TCV

User & Residents Groups

Blenheim Angling Society
Bucks Natural Environment Partnership
Colnbrook Community Association
Colnbrook Community Partnership
Colne Catchment Action Network
Colne Valley Fisheries Consultative
Colne Valley Ringing Group
Denham Water Ski Club
Earthworks Conservation Volunteers
Eastcote Conservation Panel
Eastcote Residents Association
Fisheries Inn Angling Society
Friends of Great Barn Harmondsworth
Friends of Pinn Meadows
Friends of Slough Canal
Friends of Stockers Lake
Hillingdon Canals Partnership
Hillingdon Narrowboat Association
Hillingdon Natural History Society
Hillingdon Ramblers
Ickenham Residents Association
Inland Waterways Association
Iver & District Countryside Association
Iver Heath Residents Association
Iver Village Residents Association
Maple Cross & West Hyde Residents
Maple Lodge Conservation Society
North Harrow Waltonians Angling Society
North Uxbridge Residents Association
Richings Park Residents Association
Rickmansworth Residents Association
Ruislip & District Natural History Society

Ruislip Woods Trust
Runnymede & Maple Cross Ringing Group
Slough Local Access Forum
Spelthorne Natural History Society
Sustainable Three Rivers
Three Rivers Joint Residents Association
Uxbridge Rovers Angling & Conservation
West London Group of the Ramblers
West London Model Aeroplane Club
Willowbank Association

Corporate

Affinity Water
Ambush Security
Coca Cola
Grundon Waste Management
Harleyford Valley
Heathrow
Ingrebourne Valley
Lakeside EFW
Mad Squirrel Brewery
SEGRO
Thames Water

Statutory

Environment Agency

Friends of the Colne Valley Park

The Multiplier Effect



£10 of projects for every £1 invested by local authorities and corporate supporters.



Colne Valley Regional Park

Landscape Partnership



Herts and
Middlesex



AffinityWater





Colne Valley: A Landscape on the Edge

the Landscape Partnership in numbers

800 volunteers
contributing **8,000 hours**
to conserve and
improve the
Colne Valley

7 herds of conservation cattle
helping to bring nature
back to special places



Signs

42 wayfinding signs,
20 information boards, and **4 hand-carved statues** to mark the Colne Valley Trail

36 people trained
to check for
signs of
water voles and
monitor for
mink

and **44km** of
rivers surveyed

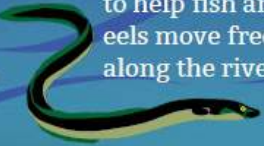


1 unifying vision for
improving local green and blue spaces

32 organisations collaborating

100 River Rangers
+ **30 fully trained**

5 weirs adapted
to help fish and
eels move freely
along the rivers



Colne Valley Park covers **40 square miles**
on the edge of **5 counties**
Over 70 lakes
200km of river and canals

Water saving advice in 14 different languages

70km of river checked for damaging
invasive species

1.5km of river corridor enhanced for water voles



8km of river managed sympathetically for water voles by anglers

44 Fishery managers trained in nature conservation



14 places improved
for countryside recreation
and exploration

72 training and expert sessions

4 knowledge exchanges to help
local conservation
groups swap great
ideas

Spreading the word through:

- 2 Interpretation centres**
- 4 social media platforms**
- 1 website**
- 20 newsletters**
- 20 walk leaflets**

6 areas improved
for habitat, not
including voles
and fisheries

150 events to
bring people closer to
nature in their area

2 trainees
now in employment
or further study





Volunteers
800 volunteering
8000 hours







Photos Ian Crump Thames Water





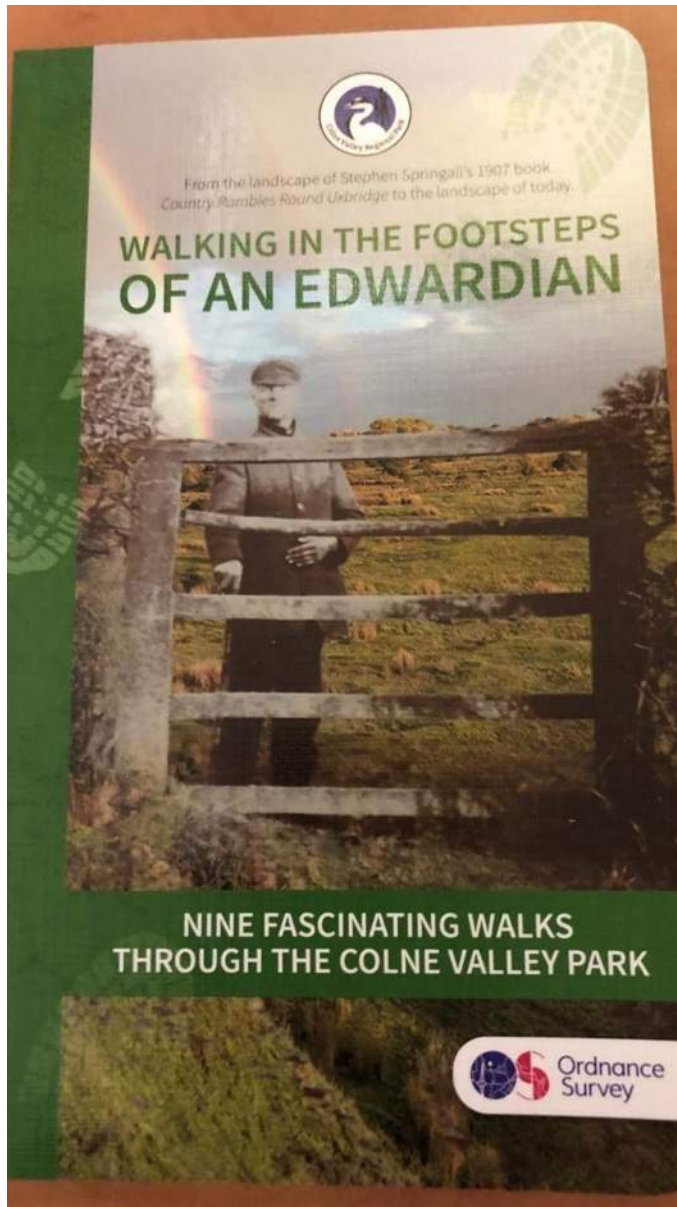


29 angling sites engaged in management planning training & conservation activity

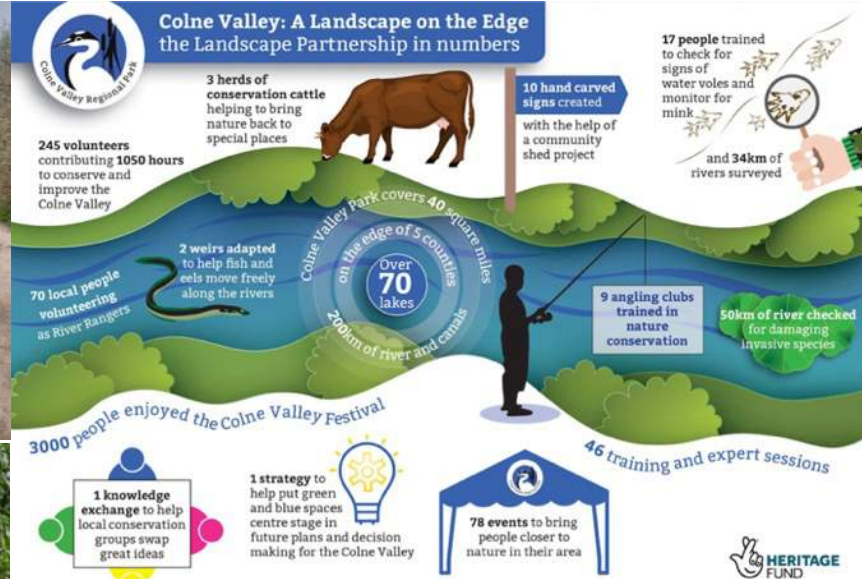


Herts and Middlesex





The good work to improve the Colne Valley as a resource for people and nature



Floating Pennywort Removal at Uxbridge Moor

We need your help to remove Floating Pennywort which is suffocating the River Colne in Uxbridge.

Friday 11th October (10:30-15:30)
Everyone welcome. No experience needed.

Meeting Point: 11 Arundel Rd, Uxbridge, UB8 2BP
Confirm your place with Chloe at chloe.compton@groundwork.org.uk / 07736133057

All you need outdoor clothes and sturdy shoes/wellies. We will provide equipment, refreshment and baps!

  Please let us know if you are coming by email or phone call contact details are below

07736133057 chloe.compton@groundwork.org.uk www.colnevalleypark.org.uk



Good work frustrated on a daily basis by so much (plus all the development proposals)



Unique area needs a Strategy & Action.

What is CVRP doing?

- Asking partners to increase contributions
- Using Lottery underspend
- Fundraising for environmental improvements & community engagement
- Respond to Planning Applications
- “Planning to improve the Green Belt” Project

Unique area needs a Strategy & Action Asks of Councils & Government

Protection underpinned by:

- **Planning**
- **Enforcement**
- **Restoration**

Status for CVRP

Local Authorities use **Land**. Original purchase intentions

Increased and long-term **core funding**

CVRP seen as a **delivery partner**

Thank You



www.colnevalleypark.org.uk

Follow on facebook & twitter

Join the Friends of the Colne Valley Park