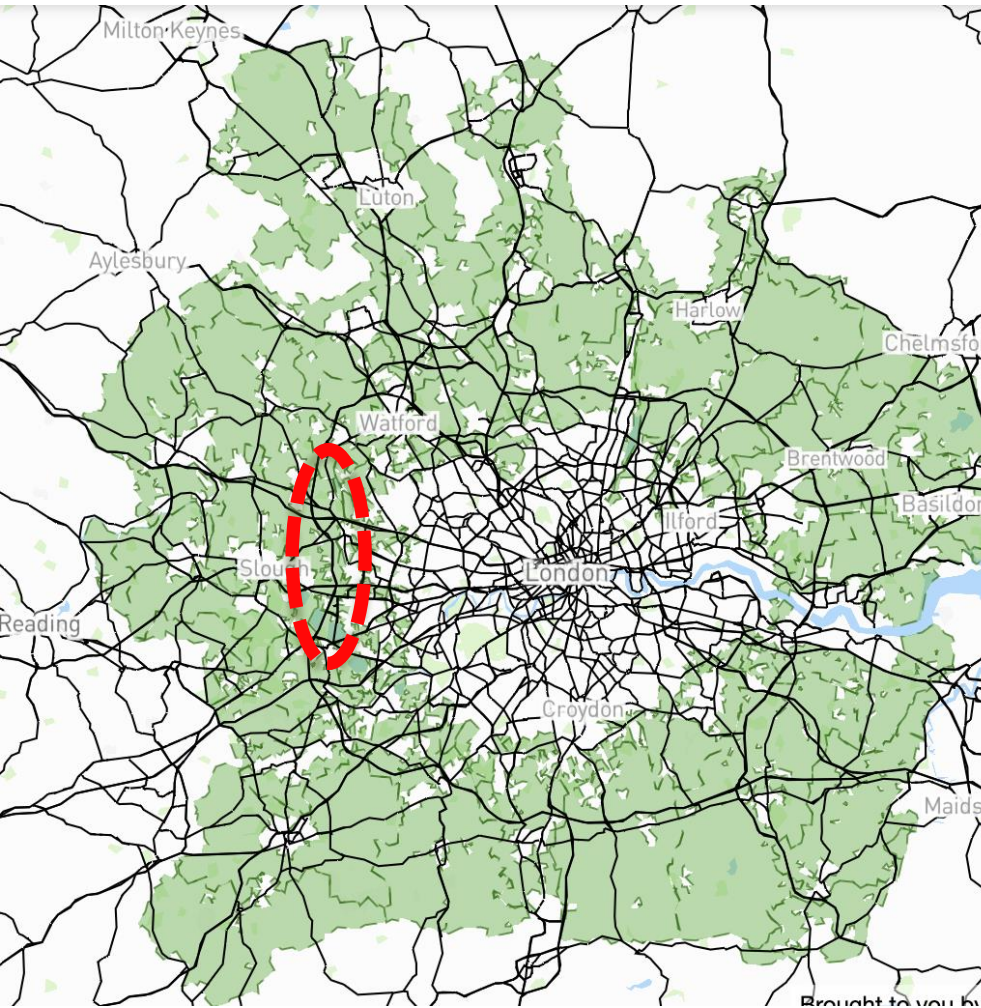


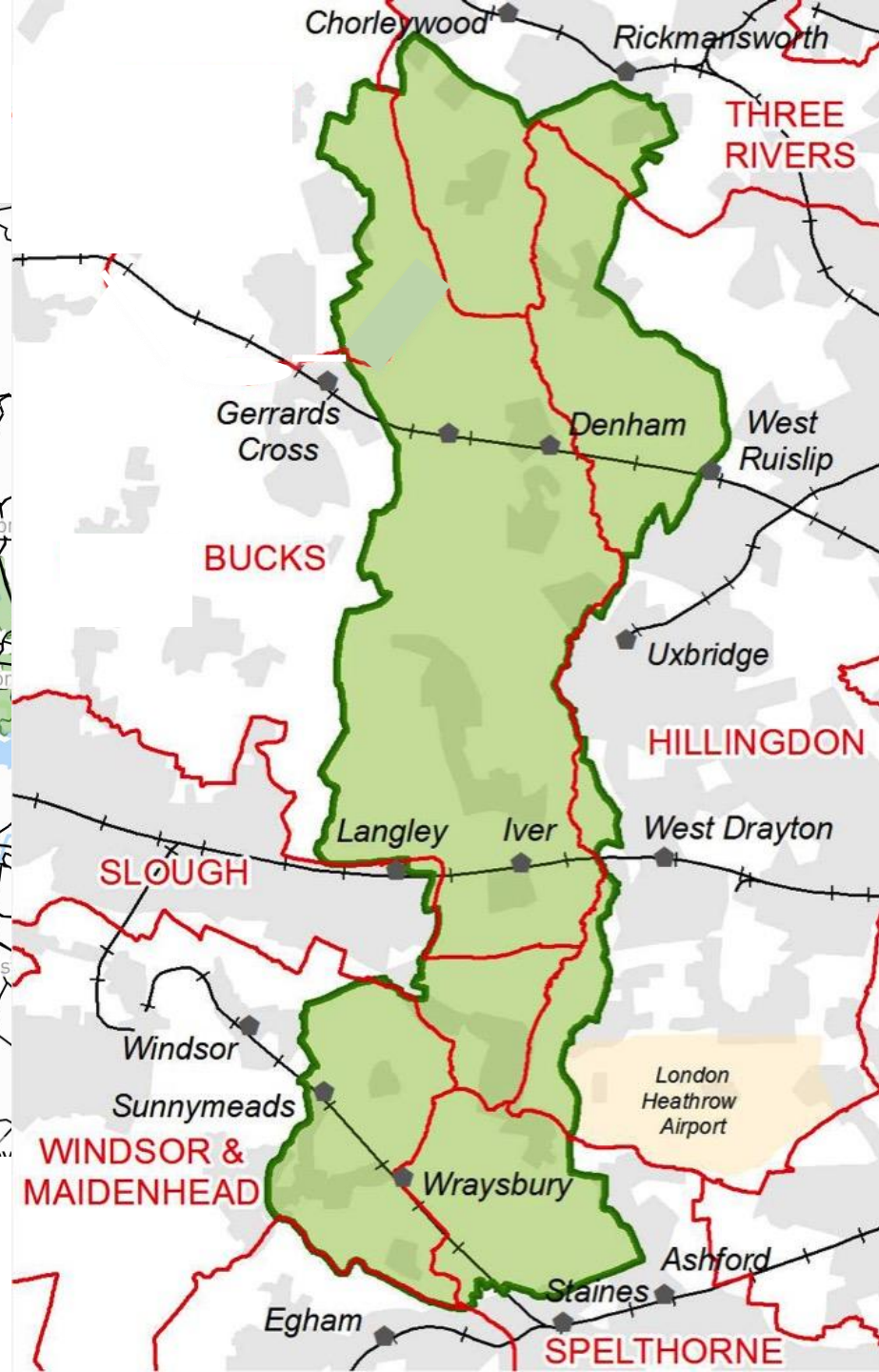
The Colne Valley Regional Park Spatial Planning - Threats & Opportunities



Jerry Unsworth - Planning Consultant
CVRP Annual Forum – 29th September 2022



A key part of London's Green Belt



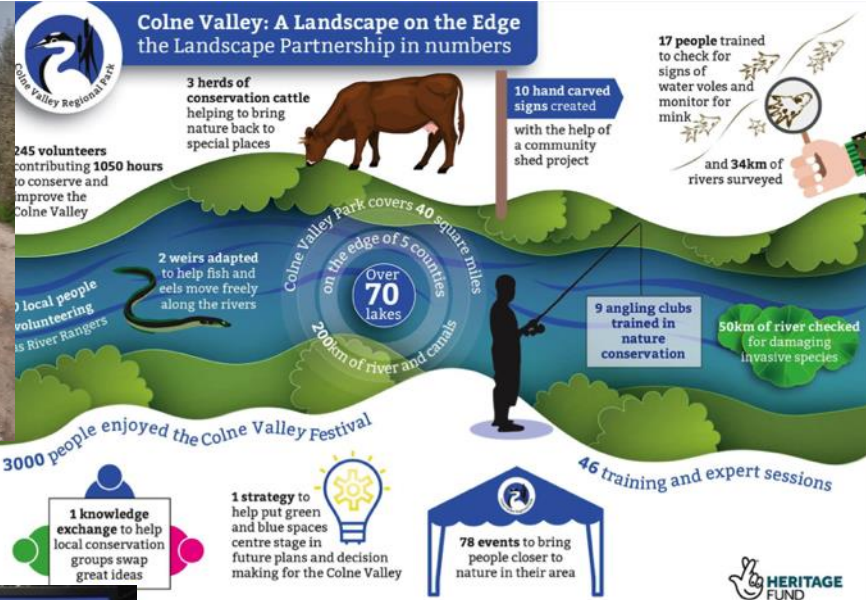
Green Belt Policy



More than a green wash on the map

“145. Once Green Belts have been defined, local planning authorities should plan positively to **enhance their beneficial use**, such as looking for opportunities to **provide access**; to provide opportunities for outdoor **sport and recreation**; to **retain and enhance landscapes, visual amenity and biodiversity**; or to **improve damaged and derelict land**.”

This is why the CVRP was established



Floating Pennywort Removal at Uxbridge Moor

We need your help to remove Floating Pennywort which is suffocating the River Colne in Uxbridge.

Friday 11th October (10:30-15:30)
Everyone welcome. No experience needed.

Meeting Point: 11 Arundel Rd, Uxbridge, UB8 2RP
Confirm your place with Chioe at chioe.crompton@groundwork.org.uk / 07736133057.
All you need outdoor clothes and sturdy shoes/wellies. We will provide equipment, refreshment and biscuits.




Please let us know if you are coming by email or phone call contact details are below.

07736133057 chioe.crompton@groundwork.org.uk www.colnevalleypark.org.uk

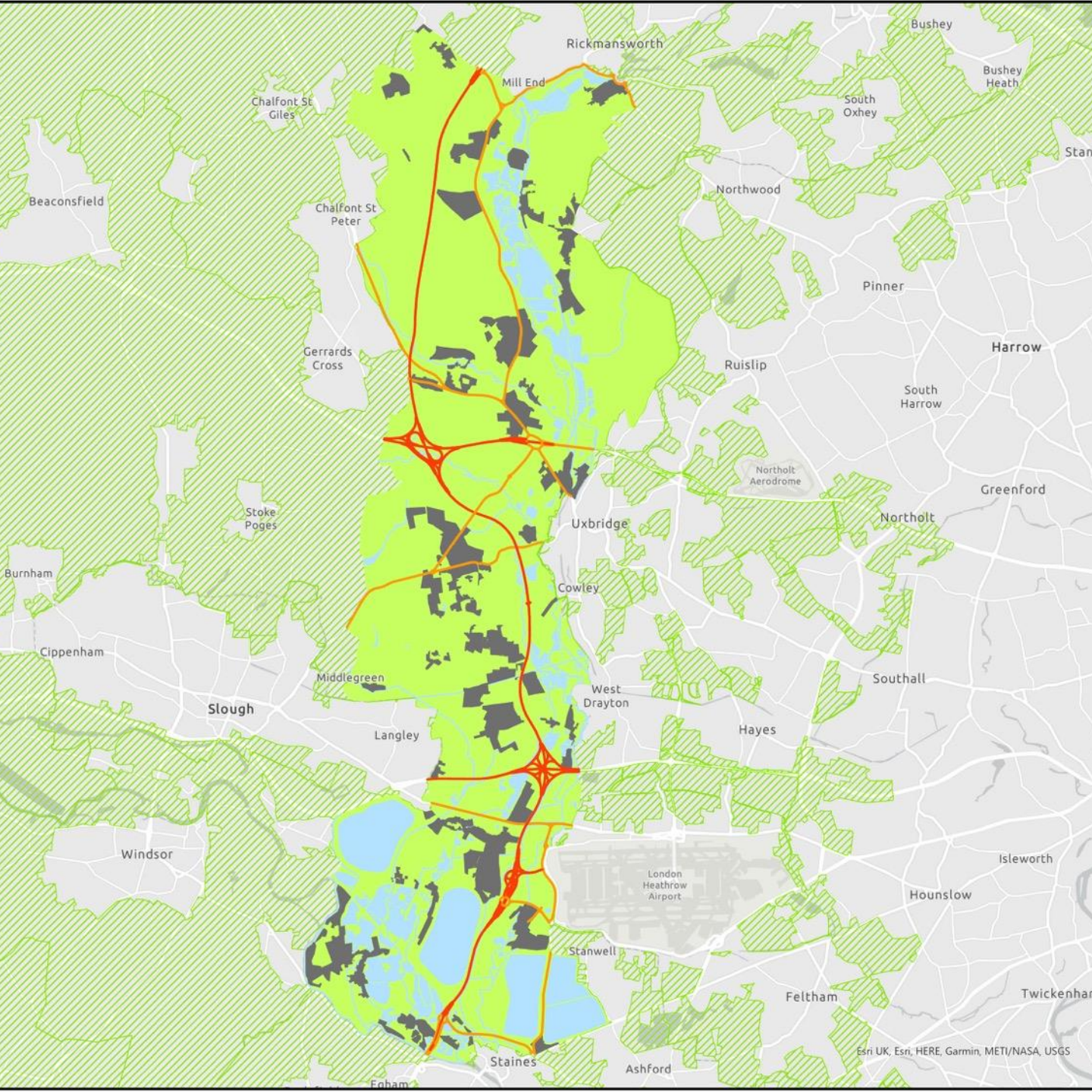


But we have to cope with this



Colne Valley Regional Park (2018)

And a
significantly
changing
development
picture

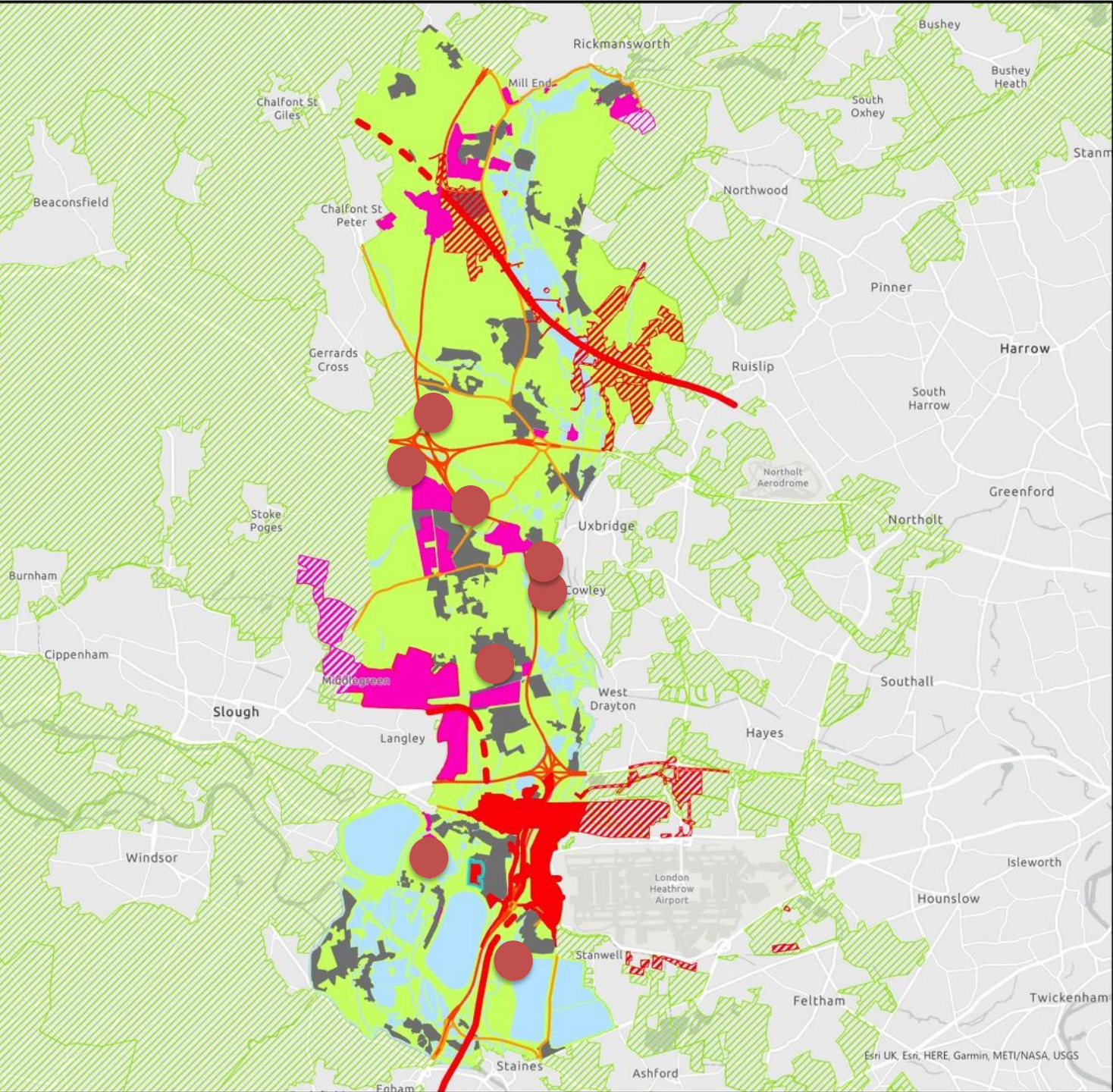


Contains OS data © Crown copyright 2021.
© Groundwork GDS 2021



Colne Valley Regional Park (The Future?)

Showing approved schemes (current Pinewood Studios expansion & HS2 works) and if planned proposals (from LAs and others) are followed through



Contains OS data © Crown copyright 2021.
© Groundwork GDS 2021



An aerial illustration of a lush green landscape. A winding blue river flows through the center, bordered by dense green forests. In the middle ground, a small town or village with grey-roofed buildings is nestled among the trees. The surrounding fields are vibrant green, with some areas showing signs of agriculture. In the upper right, a large bird of prey, possibly a hawk or eagle, is shown in flight with its wings spread. In the lower right, a dog is visible in a grassy field. The overall scene is bright and detailed, with a focus on natural beauty and rural development.

Is this where the CVRP & Green Belt should go?

Is it what government wants & intends?

Time to take stock

2019 G.I. Strategy



COLNE & CRANE VALLEYS
GREEN INFRASTRUCTURE STRATEGY
SEPTEMBER 2019
EXECUTIVE SUMMARY



Landscape
Institute
Awards
2019

FINALIST

Landscape Planning and
Assessment Award



ARUP

Since the 2019 GI Strategy

Continuing and unprecedented development pressures

Local Plans - little traction to date but activity around the corner

Government Policy Change – uncertainty ... deregulation?

HS2 construction & Heathrow growth threat still looms

Opportunities? Local Nature Strategies, Bio Net Gain, AONB
Boundary review, NPPF changes

Action on planning needed

Concerted effort over next 9 months

Planning advocacy building on the 2019 GI Strategy

- ✓ Engage with LAs and others to promote GI Strategy principles and projects in Plans
- ✓ Draw policy & decision makers' attention to CVRP's challenges
- ✓ Draw lessons from other areas, best practice & issue guidance
 - e.g. on land restoration, strategic approaches to planning affecting the CVRP, targeted enforcement, seeing GI improvements as supporting infrastructure, CVRP as a delivery partner,

Seeking a step change in approach

Thank You



www.colnevalleypark.org.uk

jerryunsworthplanning@gmail.com