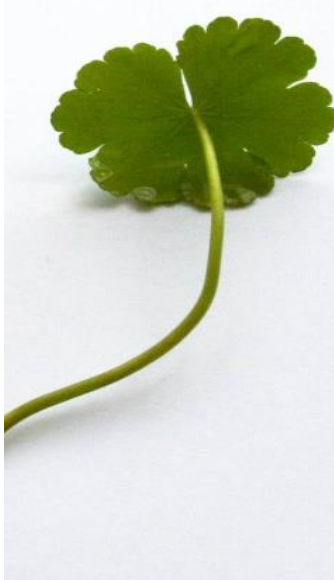


# Non-Native Invasive Species Identification and Survey:



Thank you for volunteering to complete a non native invasive species (NNIS) survey to help identify populations of NNIS and direct control efforts. Please report your findings to <https://cvfc.org.uk/nnis/>.

## Floating Pennywort *Hydrocotyle ranunculoides*



**Stem**  
Hollow, sappy, fleshy and brittle stems can support the leaves above water level. Green to red colour.



**Roots**  
Fine white roots up to 1.2m into the water.

**Leaves**  
Deeply lobed leaves up to 7cm in diameter that float or stand above the water. Plant floating or rooted along the water body.

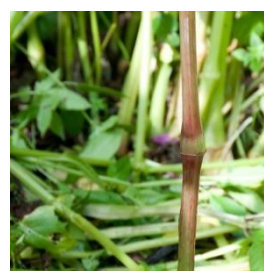
## Himalayan Balsam *Impatiens glandulifera*



**Flowers**  
Large pinkish flowers from June to August. Slipper shaped flowers with a helmeted upper petal and short spur (2.5-4cm)

**Seeds**  
Elongated exploding seed pods from July to August up to 800 seeds per plant.

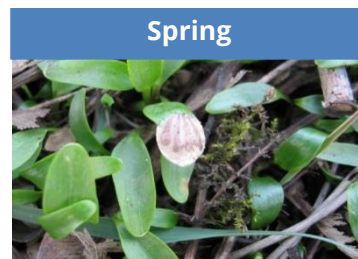
**Roots**  
Shallow fleshy root system.



**Stem**  
Hollow, sappy, and brittle stems. Grow up to 3m high. Green to red.

**Leaves**  
Green large narrow leaves with serrate edges. Up 15cm long. Grow on stem in whorls of three.

**Giant Hogweed *Heracleum mantegazzianum***



**Spring**

**Flowers**  
Umbrella shaped flower head up to 80cm with small white flowers from June to August.

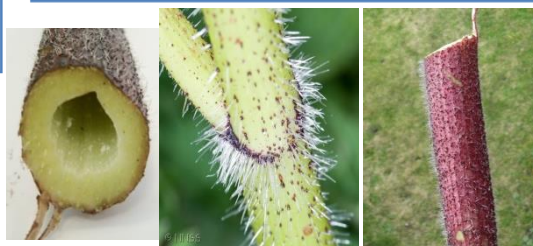
**Leaves**  
Large dark green sharply divided leaves with serrate edges up to 3m appear from April onwards.



**Summer**



**Seeds**  
Seeds - dark stripes 2 on one side & 4 on the other side.



**Stem**  
Hollow green stems with sharp bristles and red or purple spots, up to 5m high.



**Japanese Knotweed *Fallopia japonica***



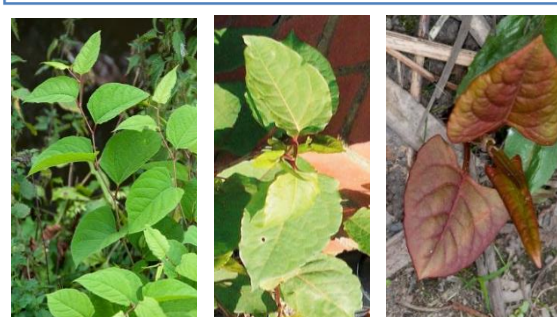
**Spring**



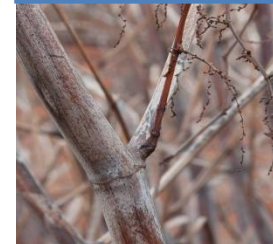
**Flowers**  
Clusters of small tiny white creamy flowers. Appear in late summer at the tips of most stems.

**Rhizome**  
Small white shoots extending from dark core rhizome with a bright orange/yellow interior.

**Summer**



**Autumn**



**Stem**  
Thick bamboo like stem with regular nodes which branch off and have red/purple speckles.

**Leaves**  
Young leaves are red and heart shaped. Older leaves are rounded/oval green with serrate edges, up 15cm long. Leaf form in a zig zag pattern.