

NORTH COLNE SUB-AREA 1

North Colne character

The North Colne is a pronounced valley and is characterised by rural landscapes, wooded valley slopes interspersed with occasional open vistas, internationally rare chalk valley streams including tributaries of the Misbourne and Alderbourne providing a gateway to the Chilterns AONB, and historic ancient lanes. Ancient woodlands of Ruislip Woods NNR and the lakes at Rickmansworth Aquadrome provide areas of rural escape.



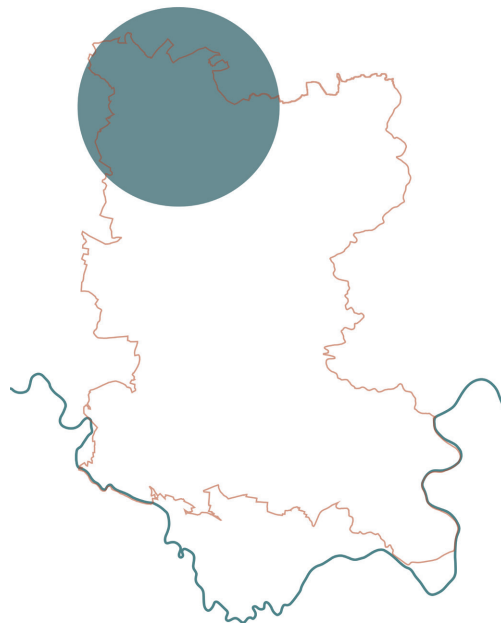
Ruislip Woods NNR - largest ancient woodland in London



Broadwater Lake SSSI - important for overwintering waterfowl



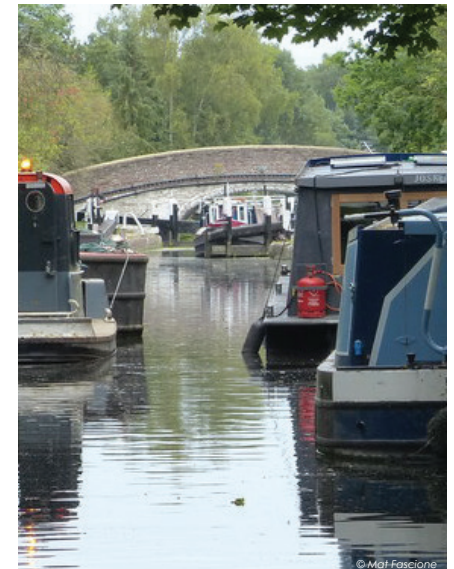
Black Barn - historic building in an historic farmland setting



Viewpoint over valley from Harefield



Blue bells in Park Wood SSSI



Grand Union Canal - important north south corridor for recreation and wildlife

DETAILED STRATEGIES

North Colne area strategy overview

The strategy for the North Colne area is to conserve and enhance the special qualities of the landscape including the historic landscape features of ancient woodlands, ancient lanes, chalk valleys and parklands, the rural qualities and areas of tranquillity. Existing recreation hubs such as Rickmansworth Aquadrome and the Grand Union Canal should be managed and promoted for all.

The history of productive land uses in this area provides an opportunity for expanding on this to promote future productive future land uses and reinforcing sense of place through links with the past. This includes farming and woodland management in ecologically sensitive ways, as well as opportunities for interpretation around gravel pits, watercress beds and orchards, with potential for new or improved visitor hubs such as at the Colne Valley Visitor Centre.

The impact of roads such as the M25 negatively affect the sense of tranquillity across some of the area, and there is potential for woodland and hedgerow planting to provide screening and filtering of views and to reflect local landscape patterns predominantly on upper slopes and hilltops. Woodland has the potential to provide multiple benefits within this landscape including natural flood management, carbon absorption and ecological connectivity, buffering and linking semi-natural and ancient woodland habitats.

Views towards the Colne Valley floor should be enhanced through vegetation management to better reveal and display the rich wetland landscape mosaic, and promoted viewpoints with wayfinding and access for all.

Gateways to the Regional Park and connectivity with local communities such as Rickmansworth and Denham should be promoted and enhanced, as well as links with the Chilterns AONB. Access along the Grand Union Canal and Colne Valley Trail should be enhanced as well as the link to the Ebury Way to the north.

Biodiversity enhancements focussed within biodiversity opportunity areas should seek to link existing habitats to form strong, connected networks of woodland and river valleys including the Misbourne valley, grassland habitats and ancient woodlands such as Ruislip Woods.

Landscapes affected by the proposed HS2 scheme should be restored and enhanced, taking the opportunity to link habitats where severed and improve pedestrian and cycle connectivity.

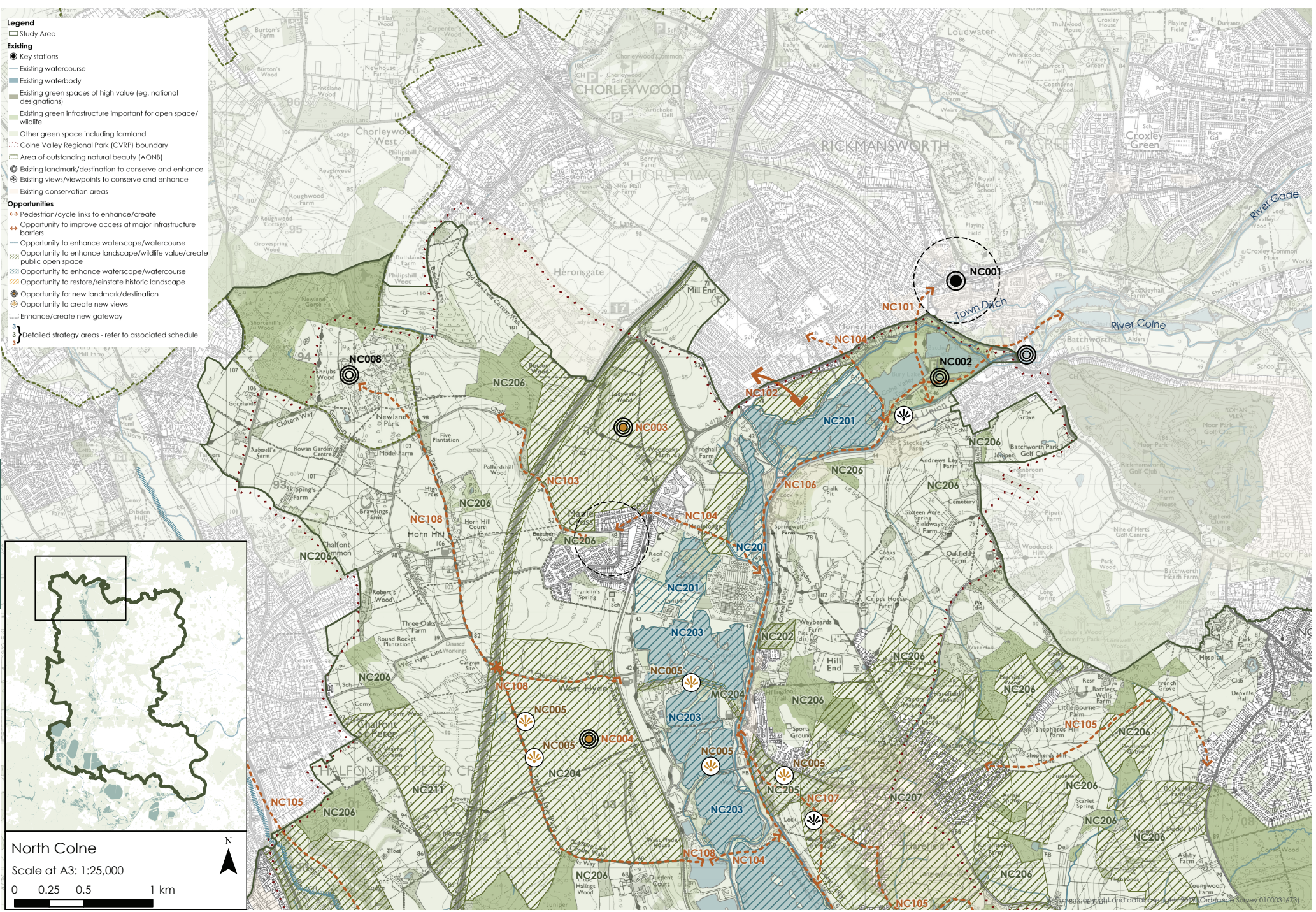
NORTH COLNE



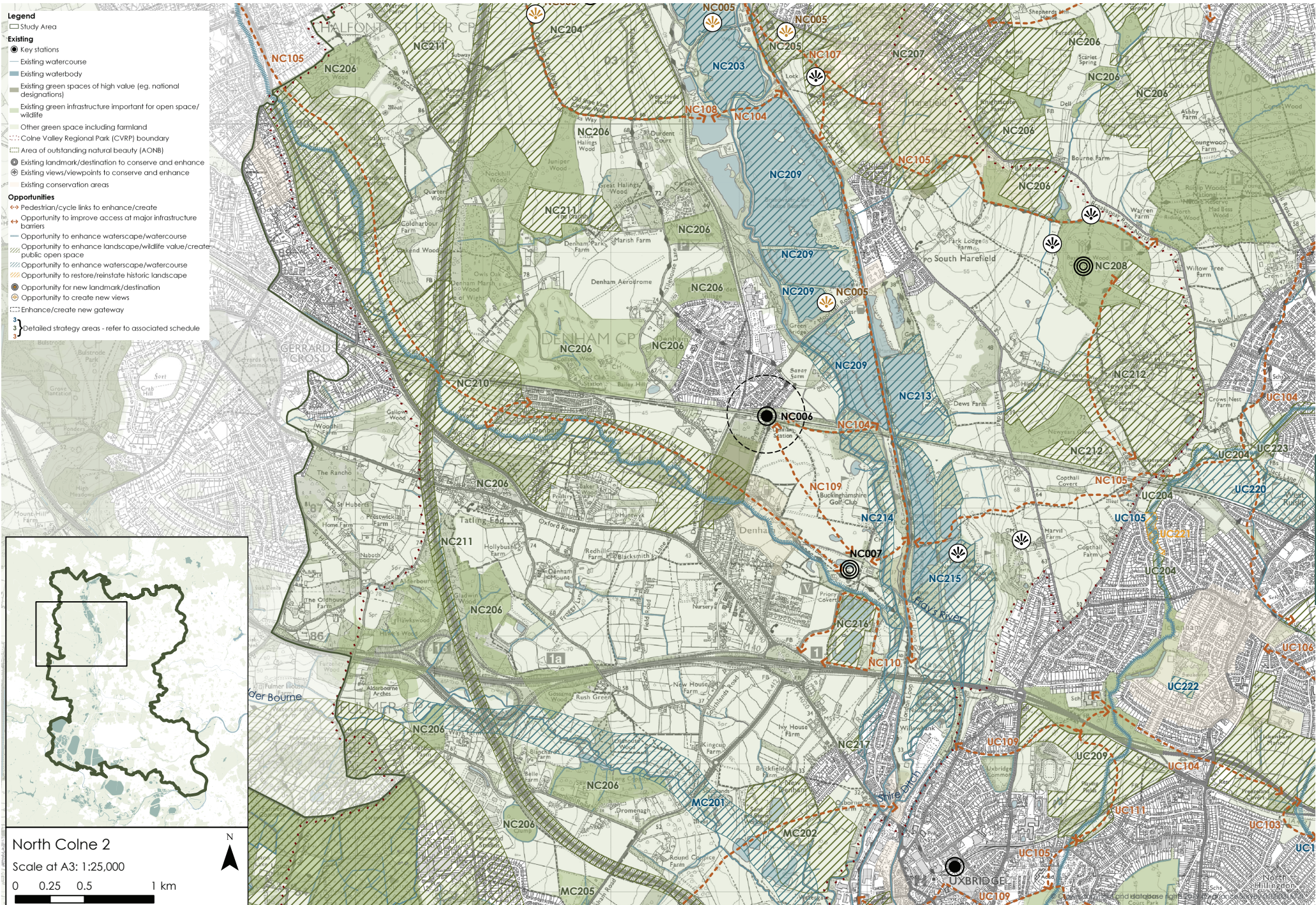
DETAILED STRATEGIES

DETAILED STRATEGIES

- Legend**
- Study Area
 - Existing**
 - Key stations
 - Existing watercourse
 - Existing waterbody
 - Existing green spaces of high value (eg. national designations)
 - Existing green infrastructure important for open space/wildlife
 - Other green space including farmland
 - Colne Valley Regional Park (CVRP) boundary
 - Area of outstanding natural beauty (AONB)
 - Existing landmark/destination to conserve and enhance
 - Existing views/viewpoints to conserve and enhance
 - Existing conservation areas
 - Opportunities**
 - Pedestrian/cycle links to enhance/create
 - Opportunity to improve access at major infrastructure barriers
 - Opportunity to enhance waterscape/watercourse
 - Opportunity to enhance landscape/wildlife value/create public open space
 - Opportunity to enhance waterscape/watercourse
 - Opportunity to restore/reinstate historic landscape
 - Opportunity for new landmark/destination
 - Opportunity to create new views
 - Enhance/create new gateway
 - Detailed strategy areas - refer to associated schedule



North Colne
 Scale at A3: 1:25,000
 0 0.25 0.5 1 km



North Colne schedule of opportunities

■ Water / wetland focused opportunities
 ■ Open space / green infrastructure focused opportunities
 ■ Access / connectivity focused opportunities

No.	Title	Description	Link to Principles	Further comments
NC001 NC101	Rickmansworth Station	Improve information and access for all to the Colne Valley Regional Park (CVRP). Provide posters at Rickmansworth Station (NC001): same format as proposals for Denham and Staines. Research best route and provide new cycle/pedestrian path to provide continuous signed and pleasant path with improved access barriers and crossings/ surfacing; also linking to the Grand Union Canal (NC101).	3. Improve pedestrian and cycle connectivity	Provides a northern gateway to Colne Valley, aims to increase foot/ cycle visitors to Rickmansworth Aquadrome, encourages Grand Union canal as commuting route to Rickmansworth Routes to form part of an integrated access network to and around the CVRP.
NC002	Rickmansworth Aquadrome	Maintain as a key destination. Enhance as a gateway for the Colne Valley through improved link to Rickmansworth station, interpretation and signage relating to Aquadrome as Gateway to CVRP and a venue for the promotion of the CVRP and its many assets. Improve wayfinding link from visitors centre to Batchworth Lock. Set priorities and areas for habitat and species conservation.	2. Protect and enhance the natural environment	
NC003	New productive destination and potential woodland planting	Potential opportunity for new productive based visitor hub offering northern gateway to Colne Valley Regional Park. This could include interpretation encompassing e.g.: woodland management for sustainable timber/ coppicing, local craft industries, charcoal etc. Potential to link to restoration of ancient Black Barn or M25 landscaping project of tree planting. Provide connections to existing path network. Encourage local food opportunities. Potential for woodland planting on upper slopes/ biodiversity enhancements to connect existing ancient woodland and areas of good quality semi-improved grassland, in agreement with landowners and subject to ecological impact analysis.	1. Celebrate landscape, character and heritage 4. Provide for communities 5. Be adaptable and resilient to climate change 6. Boost health and wellbeing	
NC004	Old Shire Lane destination/ Western Valley Slopes	New visitor facility hub as a potential alternative location (subject to robust market research and estimation of visitor number capacity for sites) for productive based visitor's centre opportunity. May include farm shop and farmers market. Potential to offer HS2 railway views, chalk grassland habitat enhancement, cycle/pedestrian/ bridleway strategic link to CVRP from Chalfont St Peter. Possibility to integrate into wider public right of way access network after consultation and taking restrictions into account. Any new routes will include appropriate surfacing, waymarking and branding. Opportunities for landscape art evoking farms/museum elements. Potentially managed as a community resource within the context of the CVRP.	1. Celebrate landscape, character and heritage 3. Improve pedestrian and cycle connectivity	Link to HS2 additional mitigation project 6. Western Valley Slopes.

DETAILED STRATEGIES

No.	Title	Description	Link to Principles	Further comments
NC005	Enhance Colne Valley views	Enhance sense of place by opening out and promoting far reaching views across Colne Valley, views of waterbodies along the valley floor and strategic paths. Interventions include: vegetation management, interpretation boards Possible locations: Coppermill Lane, Mount Pleasant green space opportunity, Broadwater Lake, Old Shire Lane. Scope to track and monitor changes to views over time. Potential to restore grassland habitats.	1. Celebrate landscape, character and heritage	Study needed to identify most suitable locations for view locations. Link to 'windows into the valley' LCAP project.
NC006 NC109	Denham station and access routes	Provide signage/interpretation welcome posters within Denham station, promoted as key gateway to CVRP (NC006). Improve cycle and pedestrian link to Denham Country Park: improved vegetation management and signage along existing path to Denham Country Park and golf course. Provide new step free direct access from Denham Station to path towards the country park if feasible. Plus the development/ establishment of circular and onward routes (NC109).	3. Improve pedestrian and cycle connectivity	
NC007	Colne Valley Park Visitor Centre	Highlight the productive history of the Colne Valley within existing Colne Valley Park visitors centre. Encourage as location for farmers markets and other events. Provide interpretation e.g. on how gravel lakes were created, highlighting typical habitats. Promote as information hub for whole CVRP and Denham Country Park as a local gateway to the wider Colne Valley Park via the Colne Valley Trail and the Frays Valley. Potential to extend further up the valley as a walking trail.	1. Celebrate landscape, character and heritage 4. Provide for communities	Opportunity for waymarked habitat trail
NC102	Access improvements near Stocker's Lake	Need for access improvements across existing infrastructure barrier, providing access to nature reserve lakes and associated landscape and biodiversity enhancements at lake edges.	1. Celebrate landscape, character and heritage 2. Protect and enhance the natural environment	Significant area is within the flood zone - opportunity for wetland/ meadow enhancement.
NC103	Chalfont Road landscape enhancements	Improve landscape character and pedestrian experience along Chalfont Road including landscape/ quality/ views/ improvements for pedestrians.	1. Celebrate landscape, character and heritage 3. Improve pedestrian and cycle connectivity	
NC104	Improve access from nearby villages, including interpretation.	Create and/or improve rights of way from settlements west of gravel pits to the Grand Union Canal. Includes improved access, signage, interpretation, path improvements, new river crossings, interpretation. E.g. Maple Cross, Mill End, Money Hill. Thereby increasing access to the landscape for all and improving the area for everyone to enjoy in a sustainable way	3. Improve pedestrian and cycle connectivity	Connect local communities to the core of Colne Valley through car free access. Encourage use of Colne Valley as an everyday commuter route using active transport towards Rickmansworth station.
NC105	Improved access to open countryside	Improved new paths for pedestrians and cyclists and other users to offer a network which improves access to open countryside. Includes linking Colne and Crane valleys to key woodlands, the Chilterns and open countryside via Misbourne valley and e.g. links to Pynchester and Brakespeare medieval moats (scheduled monuments).	3. Improve pedestrian and cycle connectivity 6. Boost health and wellbeing	

No.	Title	Description	Link to Principles	Further comments
NC106	Grand Union Canal towpath and nodes	Improve existing towpath: vegetation management, surface upgrade (and widening pathway where possible/practical). Increased number of key access points between towpath and adjacent destinations such as Colne Valley Park, which should offer: signage, map boards, removing vegetation to offer visual connections. Addressing the potential for conflict between users of the towpath.	3. Improve pedestrian and cycle connectivity	Develop and implement a branded approach through adaptation of consistent materials, branding and designs. Improvements to the canal network include dredging.
NC108 NC008	Old Shire Lane	Improve and promote use of Old Shire Lane as a historic access route through the Colne Valley Park taking into account the current equestrian users. To include enhanced landscaping, access and vegetation management to offer views across the valley along its length. (NC108). HS2 mitigation to provide same level of access if re-routing needed, maintaining its characteristics as an historic route & administrative boundary. Connects Colne Valley to Chiltern Open Air Museum (NC008).	1. Celebrate landscape, character and heritage 3. Improve pedestrian and cycle connectivity	
NC110 NC216	Lea Quarry	Working with the quarry operators whose duty it is to restore the Lea Quarry, include a circular recreation route, habitat enhancement and interpretation. Connect to Colne Valley visitors centre and investigate opportunity create a bridge over the Colne River to link to the Grand Union Canal. Implement management plan for mutual benefit of potential fishery and biodiversity, whilst ensuring the long term viability of the site.	1. Celebrate landscape, character and heritage 3. Improve pedestrian and cycle connectivity	
NC201 NC107	Maple Lodge, Springwell Broadwater and Stockers lake	Maintain and enhance string of nature reserves/ important biodiversity sites for wetland with water based habitats offering limited access as appropriate. Landscape and biodiversity enhancements at edge of Stocker's Lake. Aim to become a key wildlife watching destination connecting to Rickmansworth Lakes, plus buffer zones around the lakes (NC201). Enhance route of Colne Valley Trail through this area (NC107).	2. Protect and enhance the natural environment 3. Improve pedestrian and cycle connectivity	Significant area is within the flood zone - opportunity for wetland/ meadow enhancement.
NC202	Landscape enhancements at Summerhouse Lane Chalk Pit	Landscape and biodiversity enhancements at historic landfill at Summerhouse Lane Chalk Pit. Opportunity for woodland planting to link with surrounding woodland habitat- subject to ecological impact assessment.	1. Celebrate landscape, character and heritage 2. Protect and enhance the natural environment 5. Be adaptable and resilient to climate change	Assess site in the light of this being ex - landfill -? Clay Cap?
NC203	Water recreation at Pynesfield Lake and surrounding lakes	Retain and extend existing water recreation and angling: additional lakes offering boat access, improved physical access from lakeside paths, vegetation management to make waterbodies visible from key viewpoints with interpretation and seating. Enhance biodiversity where possible - creating ecological links with nearby woodland and grassland habitats.	1. Celebrate landscape, character and heritage 2. Protect and enhance the natural environment	

No.	Title	Description	Link to Principles	Further comments
NC204	Landscape enhancements Tilehouse Lane to Chalfont Lane	Landscape and biodiversity enhancements including potential woodland planting (subject to ecological impact assessment) on upper slopes to enhance local landscape character. To provide natural flood management benefits and in combination with M25 woodland planting opportunity, creating connectivity with surrounding woodland habitat including ancient woodlands to the south, with care to conserve historic and existing landscape character, views and visibility. Opportunity to interpret the nearby mineral site	<ol style="list-style-type: none"> 1. Celebrate landscape, character and heritage 2. Protect and enhance the natural environment 5. Be adaptable and resilient to climate change 	It should be noted that there is an existing mineral site currently extracting within this proposal area
NC205	Coppermill Down SSSI Restoration	<p>Vegetation management to enhance and celebrate views over Colne Valley, offering interpretation, seating, picnic benches and potential artwork. Grazing infrastructure management to bring SSSI back to "Favourable condition".</p> <p>Celebrate the viewpoint where it is said Hillingdon, Bucks and Herts met where the concept of the CVRP was born (see NC005).</p>	<ol style="list-style-type: none"> 1. Celebrate landscape, character and heritage 4. Provide for communities 	
NC206	Woodland management and creation	Support landowners with better management of small woodlands/ ancient woodlands along east and west slopes of Colne Valley. Improve opportunities for appropriate recreational access into the woods, improve signage/interpretation and enhance biodiversity. Explore opportunities for Habitat Connectivity.	<ol style="list-style-type: none"> 2. Protect and enhance the natural environment 3. Improve pedestrian and cycle connectivity 	Conserve and enhance ancient woodlands including Philipshill Wood, Shrubs Wood. Opportunities to create links between woodlands through existing areas of farmland ensuring a landscape scale approach (in agreement with landowners), on hill tops and upper slopes. Ensure such sites are subject to thorough ecological survey and base recommendations/ management plan on the results.
NC207	Derelict/damaged land around Harefield	Bring land into sustainable use and management in line with the 6 objectives of the Colne Valley Park. Includes Springwell Lane Chalk Pit, Summerhouse Lane Chalk Pit and Church Lane. Promote recreation and biodiversity value enhancements. Potential opportunity to restore museum site and surrounding disused land around Bourne Farm near Breakspeare House into use again. Harefield Place historic park and church with potential for research, restoration and interpretation. Maintain and enhance traditional farming uses in this area.	<ol style="list-style-type: none"> 2. Protect and enhance the natural environment 	
NC208	Ruislip and Bayhurst Woods	Continued management of important ancient woodland asset, Liaise with Historic England regarding this historically important woodland containing archaeological remains. Buffer zone around woodland to remain open, preventing habitats becoming fenced in by development. Improve connections to local communities through paths and signage upgrades. Ensure habitat connectivity to and from Ruislip and Bayhurst Woods better linking it to other woodlands and areas of habitat. Retain and enhance open views to Bayhurst Woods from Surrounding paths and roads.	<ol style="list-style-type: none"> 2. Protect and enhance the natural environment 	Improve path network - see 'Rights of Way & Permissive Routes Improvement Plan for Hillingdon' 2011 - 2021.

No.	Title	Description	Link to Principles	Further comments
NC209	Broadwater Lake and chain of lakes to south	The water bodies support nationally important populations of water birds. Existing SSSI as key bird refuge in CVRP. Improve visitor experience through new path network, direct link from Grand Union Canal, visitor facilities and bird hides. Extend biodiversity focus within gravel lakes to the south following HS2 with potential to create a new nature reserve designation with wetland habitat restoration and enhancement at the chain of lakes to the south of Broadwater Lake. Important to create joined up management plan, linking recreational, green infrastructure, landscape and ecological objectives. Scope to conserve and enhance/manage existing views between Broadwater/Stockers Lakes and the Grand Union Canal. Including provision of (informal) vehicular access to the site from Moorhall Road. User experience informed through provision of ; birdwatching hides, improved quality of access routes, ease of access for less mobile visitors and interpretation. Primary focus for conservation & works to include appropriate screen landscaping to minimise disturbance. Maintain facilities for sailing club and angling. See HS2 Mitigation project 1 for details of potential detailed opportunities.	2. Protect and enhance the natural environment	See HS2 Mitigation project 1 for details of potential detailed opportunities. See also HMWT plans for Broadwater.
NC210	River Misbourne valley	Enhance biodiversity, access and landscape character of the River Misbourne valley: <ul style="list-style-type: none"> •Restoration linked to abstraction reductions •Enhance/ create continuous pathway and signage along River Misbourne, promoted as a direct link to Chilterns AONB for pedestrians and cyclists, plus potentially horse-riders Keeping in mind possible habitat disturbance. •Restore watercourse which has flow issues and this must be a priority. Co-ordinated series of wetland management/ creation measures along the valley connecting to River Colne e.g. wet meadow ponds, scrapes, backwaters. •Encourage chalk grassland habitats, riparian habitats and offer interpretation showcasing their value, and seeking to bring the importance of chalk rivers and their fragile morphology and vulnerability into the mainstream. 	<ol style="list-style-type: none"> 1. Celebrate landscape, character and heritage 2. Protect and enhance the natural environment 3. Improve pedestrian and cycle connectivity 	Explore opportunities of working with Affinity Water on river restoration projects
NC211	M25 new woodland planting and other habitats	Reduce visual impact of M25 and enhance landscape character through encouraging tree and hedge planting along and in vicinity of the M25 - particularly at hilltops in character with local landscape pattern. Tree planting should help connect fragmented woodland patches along M25 corridor, improve air quality and improve the urban environment. Ensure proposals for tree planting are subject to an ecological impact assessment to ensure important habitats are not destroyed. Need to consider more diverse habitat creation than just 'woodland' - a characteristic mix of grassland, scrub and woodland. Vegetation management to maintain glimpsed views of the valley floor from the M25. Planting on the hill tops to create visual impact of green landscape when viewed from the other side of the valley at Harefield. Proposals to incorporate noise mitigation measures where appropriate.	<ol style="list-style-type: none"> 1. Celebrate landscape, character and heritage 2. Protect and enhance the natural environment 5. Be adaptable and resilient to climate change 	This will enhance views, the experience of footpaths within the Colne Valley and intensify the wooded hilltop characteristic of the Colne Valley. Woodland planting will also contribute to natural flood management and carbon absorption. Agreement and ongoing management plans agreed with landowners are essential.

No.	Title	Description	Link to Principles	Further comments
NC212	Newyears Green Area, Bayhurst Woods Extension	Extension to Bayhurst Woods following HS2, potentially including: woodland planting, improved/new paths and cycleways, sculptural landform and viewpoints. Provides natural flood management. Link to HS2 additional mitigation project area 7: Newyears Green Area. This area has a subtle medieval/post-medieval landscape pattern and will be heavily impacted by that scheme. Recognition of historic landscape character in new landscaping would be desirable.	<ul style="list-style-type: none"> 2. Protect and enhance the natural environment 5. Be adaptable and resilient to climate change 	Link to HS2 additional mitigation project area 7: Newyears Green Area.
NC213	Hillingdon Outdoor Activity Centre Lake	Find sustainable use for HOAC lake if HOAC has to be relocated due to HS2. Use to be in line with the CVP objectives e.g. incorporating wildlife, angling and /or water sports e.g. a Wetland Nature Reserve. Important discoveries of Mesolithic (hunter-gatherer) archaeology emerging at Dews Farm with potential for interpretation.	<ul style="list-style-type: none"> 6. Boost health and wellbeing 	
NC214	Wetland Enhancement at Denham Country Park	A co-ordinated series of new or improved connected wetlands along the River Colne e.g. at Denham Country Park and to the South of the Park. May include wet meadow ponds, scrapes, backwaters. Water Vole focus. May provide incorporated flood mitigation opportunities.	<ul style="list-style-type: none"> 2. Protect and enhance the natural environment 5. Be adaptable and resilient to climate change 	
NC215	Frays Valley	Manage and enhance set of lakes and woods for biodiversity and angling, including Frays Valley local nature Reserve, Denham Lock Woods SSSI and Frays Farm Meadows SSSI. Create buffer through appropriate management of Uxbridge Golf Course - lower areas and Colne Valley Slopes. Link with Uxbridge Alderlade Nature Reserve. Landscape and habitat enhancement on land west of Uxbridge Alderlade Nature Reserve.	<ul style="list-style-type: none"> 1. Celebrate landscape, character and heritage 2. Protect and enhance the natural environment 5. Be adaptable and resilient to climate change 	These are key areas for water voles and should be a priority for conservation and to enable the population to expand. To enhance access for management of Frays Farm Meadows SSSI through land acquisition of central embankment. Bronze Age and Roman discoveries during quarrying in 2000s could be interpreted.
NC217	Oakside Open Space	Creation of a community space with community involvement for upkeep.	<ul style="list-style-type: none"> 2. Protect and enhance the natural environment 4. Provide for communities 	Funded by HLF

COLNE AND CRANE GREEN INFRASTRUCTURE STRATEGY

We would like to thank all who contributed to the consultation on the strategy

The full report, detailed list of opportunities and accompanying map can be seen at
www.colnevalleypark.org.uk/whatwedo

contact us:

Colne Valley
colnevalley@groundwork.org.uk
www.colnevalleypark.org.uk

Crane Valley
cvp@greencorridor.org.uk
www.cranevalley.org.uk