

LOWER CRANE SUB-AREA 5

Lower Crane character

The Lower Crane contains a number of significant parks including Hounslow Heath and Crane Park in Twickenham. The lower Crane river, Longford River and the Duke of Northumberland's River provide hidden corridors of tranquillity in close proximity to large urban areas of Hounslow, Twickenham and Isleworth. Major infrastructure creates severance to pedestrian connectivity in some areas, and there are significant opportunities to enhance landscape and heritage features such as at Hanworth House and Cranford Countryside Park.



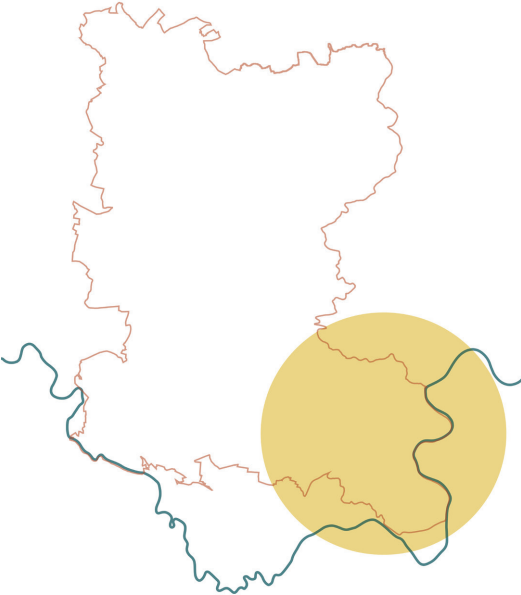
River Crane flowing through Cranford Countryside Park



Railway underpass / Cranewalk



Heavily modified River Crane channel at Craneford Way Playing Fields



Lower Duke of Northumberland's River



Hounslow Heath



Shot Tower at Crane Park

DETAILED STRATEGIES

Lower Crane area strategy overview

The strategy for the Lower Crane is to create a continuous corridor along the Crane, Longford River and Lower Duke of Northumberland's River for people and wildlife, forging strong connections between local residents and areas of natural and historic landscape including the River Thames and Kew Gardens.

Improved connectivity along riverside corridors and key green spaces such as Hounslow Heath, Bedford Country Park, Hanworth Park and Donkey Woods is needed, with clear and safe connections to local communities in Hounslow, Feltham and East Bedford. Primarily the focus should be on restoring safe connections where there is existing severance from road and rail infrastructure, but also with an aspiration to achieve clear waymarked routes from key gateways/ settlements with signage/ tree planting/ road crossings. The aspiration should be to achieve continuous pedestrian and cycle routes, where possible off-road, taking opportunities to link existing gaps in provision and with existing trails such as the London Loop and Thames Path.

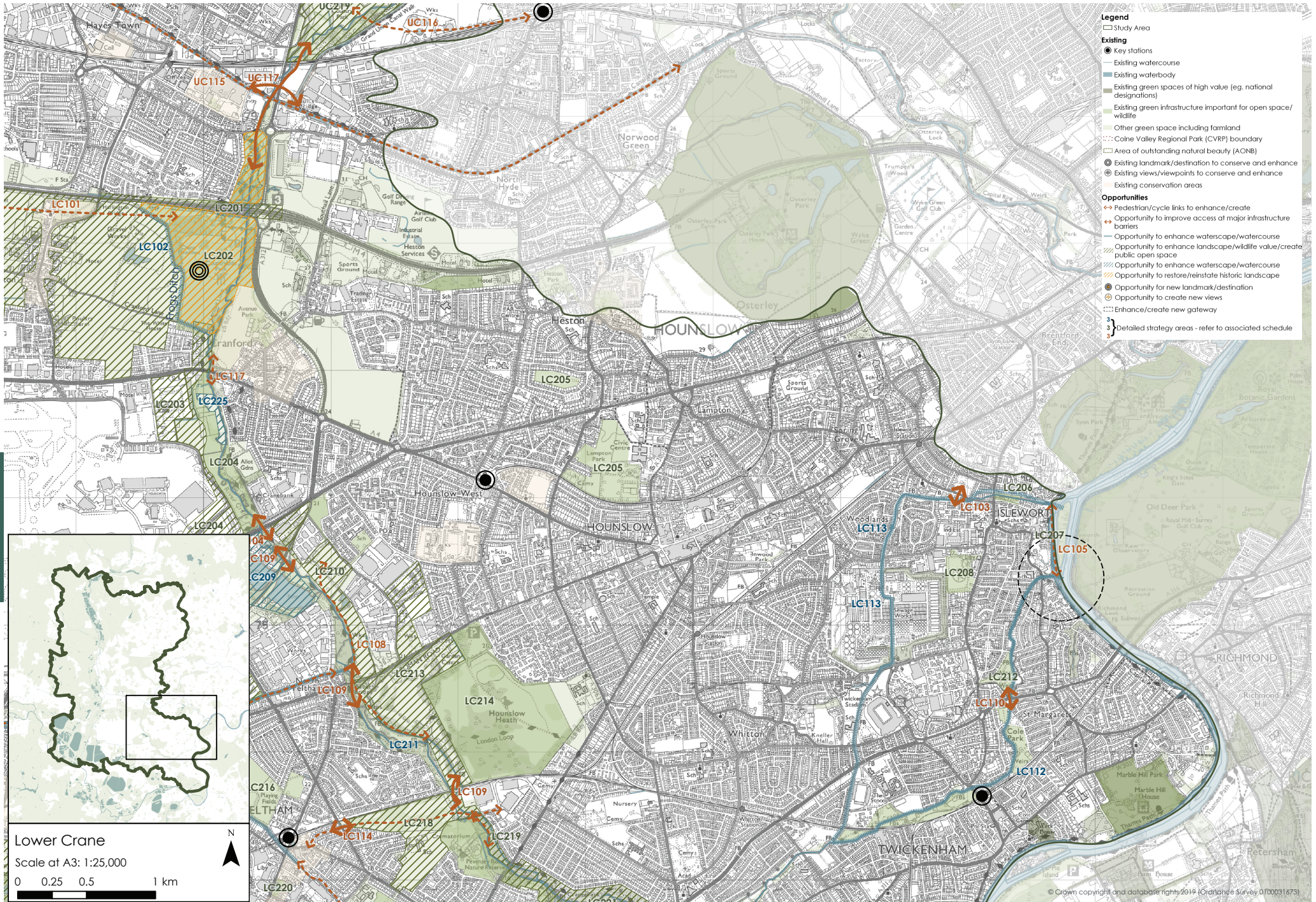
There are opportunities to improve the quality and biodiversity value of existing open spaces such as Cranford Countryside Park and Hanworth Park, with associated restoration of historic buildings and landscape features and potential incorporation of education/ community facilities or farmer's markets. The smaller green spaces are equally important to conserve and enhance, forming key nodes on the green chain of open spaces along the river.

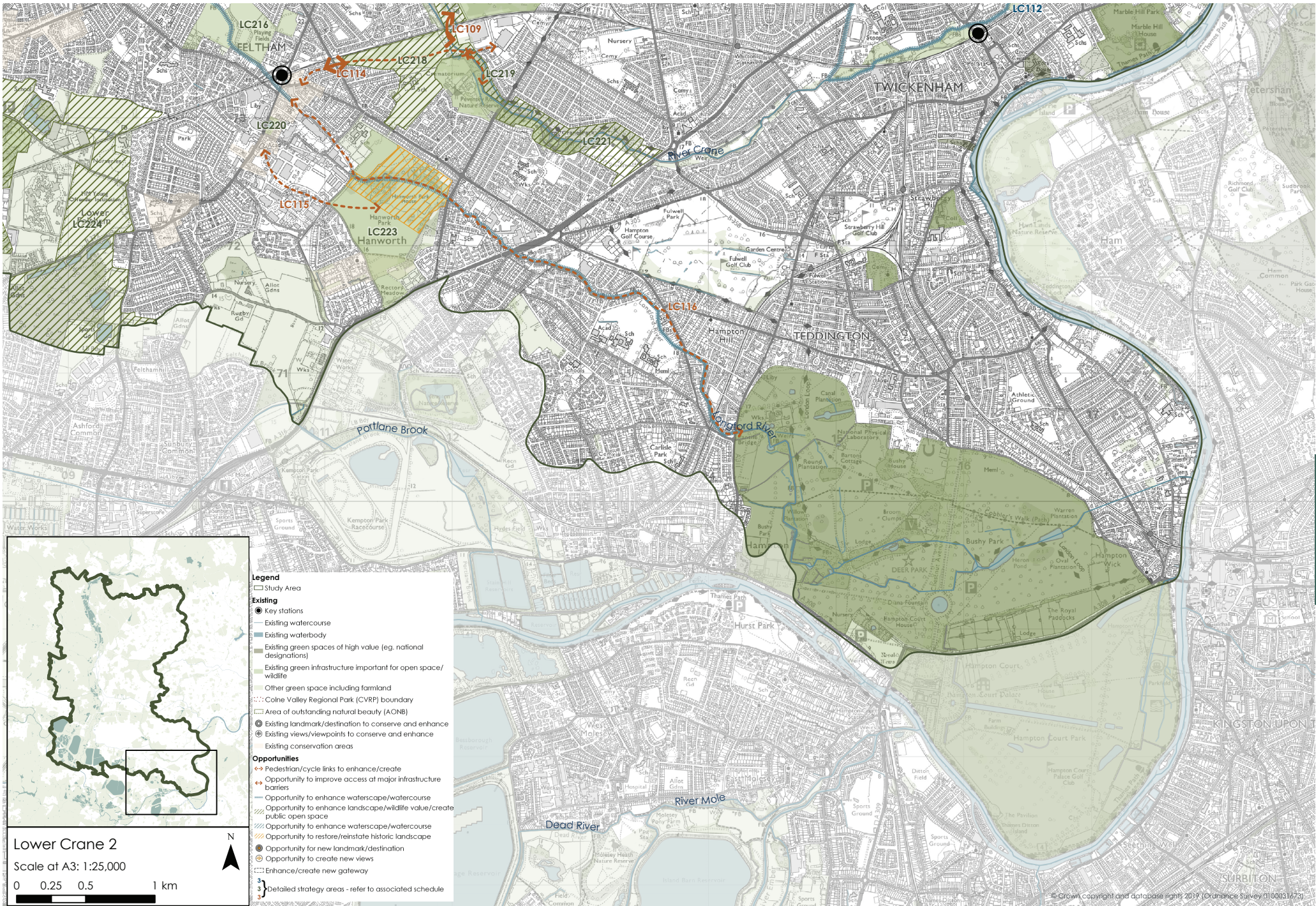
There are opportunities to enhance the quality and condition of watercourses through

naturalisation and floodplain reinstatement, extending meadow areas and creating/ restoring wetlands. Opportunities for upstream woodland planting and incidental street tree planting can yield important benefits for natural flood alleviation, providing resilience to climate change. Opportunities also include for improvements to the Longford River/ Upper Duke of Northumberland's River such as de-culverting and bringing them into a single channel to improve water flow along the southern perimeter of Heathrow Airport, improving pedestrian experience and green transport links.

Proximity to Heathrow airport and its associated impacts presents even greater need to provide high quality open spaces for restorative mental and physical well-being for nearby communities. The strategic location of the area within the 'Western Wedge' potential regeneration zone identified in the London Plan, presents possible opportunities for funding high quality spaces.



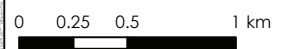




DETAILED STRATEGIES

- Legend**
- Study Area
 - Existing**
 - Key stations
 - Existing watercourse
 - Existing waterbody
 - Existing green spaces of high value (eg. national designations)
 - Existing green infrastructure important for open space/wildlife
 - Other green space including farmland
 - Colne Valley Regional Park (CVRP) boundary
 - Area of outstanding natural beauty (AONB)
 - ⊕ Existing landmark/destination to conserve and enhance
 - ⊕ Existing views/viewpoints to conserve and enhance
 - ⊕ Existing conservation areas
 - Opportunities**
 - ↔ Pedestrian/cycle links to enhance/create
 - ↔ Opportunity to improve access at major infrastructure barriers
 - Opportunity to enhance waterscape/watercourse
 - ▨ Opportunity to enhance landscape/wildlife value/create public open space
 - ▨ Opportunity to enhance waterscape/watercourse
 - ▨ Opportunity to restore/reinststate historic landscape
 - Opportunity for new landmark/destination
 - ⊕ Opportunity to create new views
 - Enhance/create new gateway
 - 3 } Detailed strategy areas - refer to associated schedule

Lower Crane 2
Scale at A3: 1:25,000



Lower Crane schedule of opportunities

Water / wetland focused opportunities
 Open space / green infrastructure focused opportunities
 Access / connectivity focused opportunities

No.	Title	Description	Link to Principles	Further comments
LC101	Cranford Countryside Park to Harmondsworth	New strategic link north of Heathrow.	3. Improve pedestrian and cycle connectivity	
LC103	Lower Duke's River access at the Old Brewery Site	There is a short length of the river that is not accessible at the northern end of the old Isleworth Brewery site. Resolving this would open up around 400 metres of the river to public access.	3. Improve pedestrian and cycle connectivity 4. Provide for communities 6. Boost health and wellbeing	
LC104	A30 and Piccadilly line crossing	Create new connection at the major blockage in the middle Crane. Bridge link needed to connect Causeway open space and Huckerby's Meadows.	3. Improve pedestrian and cycle connectivity	On London Loop and will make parks, nature reserves and open spaces more accessible.
LC105	Confluence of the Crane and the Thames	Enhance access and environmental value at the confluence. Introduce signage and interpretation.	2. Protect and enhance the natural environment 3. Improve pedestrian and cycle connectivity	
LC106	Hounslow Urban Farm and Bedfont open spaces	Improve landscape quality and experience. Biodiversity enhancements and links with nearby spaces, opportunity to create/ enhance wildflower meadow. Opportunity for education related to nature and animals linking with Hounslow Urban Farm. Improve access from Hatton Cross Station, opportunity to provide a link to Duke's River.	2. Protect and enhance the natural environment 4. Provide for communities 5. Be adaptable and resilient to climate change 6. Boost health and wellbeing	Strategically important open space linking the Duke of Northumberland's River with the Crane. In proximity to some areas of relative deprivation (30% most deprived percentile within IMD).
LC107	Upper Duke of Northumberland's River (DNR)/ Longford River	Bring the Upper Duke's and Longford rivers into a single channel to create an enhanced wildlife and walking/cycling corridor around it. Naturalise river where in concrete channel, and improve river banks. The Upper Duke's River is a significant environmental, heritage and community asset. Potential opportunity for natural flood management and space for water.	2. Protect and enhance the natural environment 5. Be adaptable and resilient to climate change	The corridors also provide key links within the wider network linking the Thames and Crane with the Colne. The value of these links is far from optimised at present and there are major opportunities to make improvements to the way they operate as wildlife and community green corridors. Twin rivers re-naturalisation and green buffer Water Framework Directive (WFD) project.
LC108 LC210	Green Lane Wetlands	Conserve existing wetland habitat at Green Lane wetlands and improve wildlife and flood-balancing potential. Take opportunity to extend habitat where possible. Link with the work already undertaken here by London Wildlife Trust (LC210). Facilitate sensitive public access (LC108).	5. Be adaptable and resilient to climate change	

DETAILED STRATEGIES

No.	Title	Description	Link to Principles	Further comments
LC109	Road crossing enhancements	Enhance road crossings to connect key green spaces along the River Crane corridor, including new Causeway road crossing for pedestrians and cyclists, plus new signage. Improve pathway at the northern end of Donkey Woods which is very prone to flooding and can cause major access blockages. Baber Bridge is a Grade II listed structure.	3. Improve pedestrian and cycle connectivity	
LC110	Moormead Park (Cole Park) to Northcote Nature Reserve link	Link Moormead Park (Cole Park) to Northcote Nature Reserve through the Cole Park allotments - including A316 crossing.	3. Improve pedestrian and cycle connectivity	See Lower River Crane Restoration feasibility study (http://www.cranevalley.org.uk/projects/lower-river-crane.html)
LC111	Upper DNR access links	Improve access along the existing river corridor, linking Colne and Crane River valleys to the south of Heathrow. Including reinstate and improve pathway along north bank of DNR from Fagg's Road to River Gardens.	1. Celebrate landscape, character and heritage 3. Improve pedestrian and cycle connectivity	Part included in Feltham west area plans.
LC112	Lower Crane improvements	Lower River Crane corridor, including river restoration project and associated open spaces - identifies five key project opportunities at Mereway Nature Reserve, Craneford Fields, Twickenham Rough, Moormead Park (Cole Park), Cole Park allotments. Also includes in-stream enhancement throughout the 3 km reach.	1. Celebrate landscape, character and heritage 2. Protect and enhance the natural environment 5. Be adaptable and resilient to climate change 6. Boost health and wellbeing	See Lower River Crane Restoration feasibility study (http://www.cranevalley.org.uk/projects/lower-river-crane.html)
LC113	Lower DNR	Improvements to the Lower Duke of Northumberland's River which have been identified include continued marginal vegetation planting, access improvements e.g. blocked riverside access by the old Isleworth Brewery site. Maintenance of the whole Lower DNR.	2. Protect and enhance the natural environment 3. Improve pedestrian and cycle connectivity 5. Be adaptable and resilient to climate change	Improvements would form part of a Phase 2 project, building on the 4km riverside corridor enhancements along this corridor.
LC114	Harlington Road underpass	Create a new pedestrian underpass underneath Harlington Road to connect Feltham Marshalling Yard directly with Queen's Road, and enhance walking connection with the centre and station.	3. Improve pedestrian and cycle connectivity	
LC115	Feltham to Hanworth Park link	Create new direct walking route from Hanworth Park through the ex MOD site into the town centre. With linked green spaces along the route.	3. Improve pedestrian and cycle connectivity	
LC116	Longford River	Create new/ enhance existing access along the Longford River corridor. Enhance the river corridor, including habitat and water quality improvement and naturalistic character of the river corridor and provide seating. Longford River forms an important strategic link between Hampton Court/ Bushy Park and Hanworth Park, and extending northwards through Feltham from the Upper Duke's River. The historic significance of the Longford River should be recognised.	1. Celebrate landscape, character and heritage 3. Improve pedestrian and cycle connectivity	The council is planning a shared cycle and pedestrian path along the Longford River between the High Street and Browells Lane. At present the river is inaccessible for long stretches and therefore fails to act as a strategic green route through the Town Centre.

No.	Title	Description	Link to Principles	Further comments
LC117	A4 crossing	Provide a pedestrian crossing and wayfaring enhancements at the A4 road bridge in Cranford		Information Received Via email
LC201	M4 mitigation	Mitigation along M4 including SUDS scheme to intercept pollution from road. This is the largest source of road run-off pollution into the river.	<ul style="list-style-type: none"> 2. Protect and enhance the natural environment 5. Be adaptable and resilient to climate change 	
LC202 LC102	Cranford Countryside Park	<p>Opportunity for café and enhancements to park, as well as education centre (some proposals underway). Create a visitor hub for the Crane valley in this central location. Restore heritage features including Grade II* listed Church of St Dunstons, ha-ha, a large walled garden and the site of an ice house. Opportunity for ecological enhancements to buffer existing ancient woodland and for further river enhancement.</p> <p>Frogs Ditch -opportunity to take the stream out of culvert and re-route through Cranford Countryside Park (LC102).</p>	<ul style="list-style-type: none"> 1. Celebrate landscape, character and heritage 2. Protect and enhance the natural environment 5. Be adaptable and resilient to climate change 6. Boost health and wellbeing 	<p>Habitats - semi improved grassland BAP and traditional orchard, deciduous woodland. Links to Crane priority river habitat.</p> <p>Existing HLF funding including restoring historic buildings and visitor facility.</p>
LC203	Cranebank floodplain enhancements	Linking existing areas of open space and biodiversity value - Cranford Countryside Park and Cranebank Meadows. Buffer existing designated sites/ habitats including woodland, meadow and semi-improved grassland. Restore historic meanders at Berkeley Meadows as functional floodplain. Opportunity for SUDS/ street tree planting in urban areas for natural flood management and improving green links between the river, allotments and nearby schools - to promote streetscape/ garden enhancements. Buffer to Cranford Countryside Park. Dudsett Farm - floodplain restoration and SuDS.	<ul style="list-style-type: none"> 1. Celebrate landscape, character and heritage 2. Protect and enhance the natural environment 5. Be adaptable and resilient to climate change 6. Boost health and wellbeing 	Crane Meadows meander reconnection has been recently completed. Area within flood zone.
LC204	Huckerby's Meadows and Cranebank Meadows	Conserve and enhance Huckerby's Meadows London Wildlife Trust reserve and Cranebank Local Nature Reserve including the functioning floodplain.	<ul style="list-style-type: none"> 2. Protect and enhance the natural environment 5. Be adaptable and resilient to climate change 	
LC205	Lampton Park and Sutton Playing Field/ green	Enhance biodiversity and protect open spaces and facilities for community use.	<ul style="list-style-type: none"> 2. Protect and enhance the natural environment 4. Provide for communities 6. Boost health and wellbeing 	Close to some areas of relatively high deprivation (within 30% most deprived percentile - IMD).
LC206	Silverhall Park	Conserve and enhance key strategic open space on the Lower Duke's River. Including new access to woodland space at Mill Plat.	<ul style="list-style-type: none"> 1. Celebrate landscape, character and heritage 2. Protect and enhance the natural environment 	
LC207	Isleworth Ait LNR	Conserve existing nature reserve with key focus on sustaining rare mollusc populations, managed by the London Wildlife Trust.	<ul style="list-style-type: none"> 2. Protect and enhance the natural environment 	

No.	Title	Description	Link to Principles	Further comments
LC208	Redlees Park	Conserve and enhance key strategic open space near to the Lower Duke's River - and better link it into the Lower Duke's path.	<ol style="list-style-type: none"> 1. Celebrate landscape, character and heritage 2. Protect and enhance the natural environment 	
LC209	Heathrow balancing ponds	Continued biodiversity enhancements at Heathrow Balancing Ponds	<ol style="list-style-type: none"> 5. Be adaptable and resilient to climate change 	Existing management plan in place
LC211	Donkey Woods and Brazil Mill Woods	Conserve and enhance Donkey Wood and Brazil Mill Wood including enhanced wet woodland and riverside habitats. Enhanced access required through the site and linking it to nearby areas of deprivation. Create links to the heritage story e.g. through interpretation of nearby heritage features - Blast Mounds, Baber Bridge, mill site.	<ol style="list-style-type: none"> 1. Celebrate landscape, character and heritage 2. Protect and enhance the natural environment 6. Boost health and wellbeing 	London Loop and River Walk pass through this chain of open spaces very close to large areas of residential use and schools. Strategic connections to other strategic open spaces and wildlife sites. High value sites currently under-used due to lack of investment.
LC212	Northcote Nature Reserve	Northcote Nature Reserve is a key node along the Lower River Crane corridor (LC112) and associated open spaces. Further opportunities to enhance nature reserve.	<ol style="list-style-type: none"> 2. Protect and enhance the natural environment 5. Be adaptable and resilient to climate change 	
LC213	Crane corridor and eastern bank near Hounslow Heath	<p>Creating green links between key assets of Crane corridor and Hounslow Heath including connections with local housing estates and schools. Opportunity for major wetland enhancement works to the Hounslow Heath golf club site. Option for an improved walking and cycling route along the east bank of the Crane including underpass link below Staines Road.</p> <p>Create new eastern river bank route through the Hounslow Heath Golf Club site. Option for an improved walking and cycling route including an underpass link below Staines Road and link to the Green Lane Meadows site. Eastern Crane link to Green Lanes Wetland.</p>	<ol style="list-style-type: none"> 1. Celebrate landscape, character and heritage 2. Protect and enhance the natural environment 3. Improve pedestrian and cycle connectivity 	Potential for inclusion in Hounslow Heath golf course development.
LC214	Hounslow Heath	Conserve and enhance Hounslow Heath Local Nature Reserve, Site of Importance for Nature Conservation (SINC) and lowland heathland habitat.	<ol style="list-style-type: none"> 2. Protect and enhance the natural environment 5. Be adaptable and resilient to climate change 	To provide loop with existing underpass under Staines Road on the western bank. Potential to include in Hounslow Heath golf course development.
LC216	Feltham Parklands	Improve access to and within the park including new bridge links over the River Longford, improve facilities including recreation and sports and improve landscape quality. Opportunity for outdoor events space/ community garden projects.	<ol style="list-style-type: none"> 1. Celebrate landscape, character and heritage 3. Improve pedestrian and cycle connectivity 4. Provide for communities 5. Be adaptable and resilient to climate change 6. Boost health and wellbeing 	

No.	Title	Description	Link to Principles	Further comments
LC217	Mayfield Farm and Water Treatment Works	Mayfield Farm and Water Treatment Works SINC and Scheduled Monument sites designated for Romano-British settlement/ part of a causewayed enclosure. Enhance biodiversity on existing farmland, creating links with nearby green spaces - including Bedfont Lakes. Opportunity for future public access/ tree planting dependent on future agricultural or other land use. Scope to interpret scheduled remains. This is a very sensitive location with two scheduled monuments and development pressure. Aim to improve management and interpretation of the SMs.	<ul style="list-style-type: none"> 2. Protect and enhance the natural environment 4. Provide for communities 5. Be adaptable and resilient to climate change 	Currently arable fields - check future plans for the site whether it will continue to be farmed.
LC218	Feltham Marshalling Yards	Create new connectivity where currently there is a blockage between lower and middle Crane corridor. Major opportunity to create a new high quality green open space with a range of landscaped areas of a naturalistic character, including wetland areas, woodlands and open grasslands. Improve pedestrian/ cycle access into and around the park, linking to an enhanced route along the River Crane and a better connection across the river with Godfrey Way. Potential to combine with LC217	<ul style="list-style-type: none"> 1. Celebrate landscape, character and heritage 2. Protect and enhance the natural environment 3. Improve pedestrian and cycle connectivity 5. Be adaptable and resilient to climate change 6. Boost health and wellbeing 	National Rail putting in new depot - have created a temporary link. This could break the chain if it is not delivered.
LC219	Pevensey Road Nature Reserve and Little Park	Conserve and enhance Local Nature Reserve and Little Park. Wet woodland management, pollarding trees along the River Crane to open up ponds, woodland management. Access enhancements e.g. boardwalk. Enhance existing biodiversity links along the river corridor and with nearby open spaces including Feltham Marshalling Yard and Hanworth Park. Note potential link to LC114.	<ul style="list-style-type: none"> 2. Protect and enhance the natural environment 5. Be adaptable and resilient to climate change 6. Boost health and wellbeing 	Links with projects and enhancements in the Hounslow Biodiversity Action Plan
LC220	Feltham Town Centre	Improve Feltham Green as an important meeting point and civic space within the town, opening up to establish better visual and physical connections from the High Street.	<ul style="list-style-type: none"> 1. Celebrate landscape, character and heritage 2. Protect and enhance the natural environment 6. Boost health and wellbeing 	
LC221	Crane Park	Ongoing improvements to existing park including environmental enhancements and creating/ enhancing green links to local schools.	<ul style="list-style-type: none"> 2. Protect and enhance the natural environment 4. Provide for communities 	
LC222	Bedfont Lakes Country Park	Conserve and enhance Bedfont Lakes Country Park/ Local Nature Reserve, and Princes Lakes Metropolitan SINC. Opportunity for improving existing facilities and creating new education centre for use by local community groups, schools, training.	<ul style="list-style-type: none"> 1. Celebrate landscape, character and heritage 2. Protect and enhance the natural environment 4. Provide for communities 6. Boost health and wellbeing 	

No.	Title	Description	Link to Principles	Further comments
LC223	Hanworth House and Park	Conserve and enhance Hanworth Park, establishing a more diverse landscape experience. De-culvert, restore and re-naturalise Longford River with new bridge crossings to retain connectivity within the park. Enhance the visual amenity of the existing open river sections. Add interpretation. Restore Grade II listed Hanworth House to provide a focal point within the park. Enhance the interface of Hanworth Air Park Leisure Centre and Library with the park. Ensure that existing wood pasture and parkland BAP and acid grassland priority habitat requirements are delivered.	<ol style="list-style-type: none"> 1. Celebrate landscape, character and heritage 2. Protect and enhance the natural environment 3. Improve pedestrian and cycle connectivity 4. Provide for communities 5. Be adaptable and resilient to climate change 6. Boost health and wellbeing 	Hounslow BAP. High Level Stewardship grant from Natural England previously in place. Hanworth Air Park has an illustrious history, as a former hunting ground turned airfield, having seen the landing of the Graf Zeppelin airship and welcoming the first woman flying solo across the Atlantic.
LC224	East Bedfont Lake, Raleigh Park and London Diocesan Lands	East Bedfont Lake SINC and Raleigh Park SINC. Improve management for biodiversity including potential for new tree planting. Improve quality of Raleigh Park including play equipment/ green gym and signposted circular walking route. Improve link between east and west parts of the site. Potential opportunity for events space/ new facilities e.g. picnic areas/ play/ football and activities linked with adjacent Young Offenders Institute/ local community hub.	<ol style="list-style-type: none"> 1. Celebrate landscape, character and heritage 2. Protect and enhance the natural environment 4. Provide for communities 5. Be adaptable and resilient to climate change 6. Boost health and wellbeing 	Provides a link and buffer around Bedfont Lakes Country Park. HM Young Offenders Institution adjacent and close to 20% most deprived percentile within IMD in East Bedfont.
LC225	Dudsett Farm	Develop options appraisal for future of site, with view to floodplain restoration, natural flood management, biodiversity and access enhancements.	<ol style="list-style-type: none"> 2. Protect and enhance the natural environment 4. Provide for communities 5. Be adaptable and resilient to climate change 	Old car park, requiring significant costs to remediate.

COLNE AND CRANE GREEN INFRASTRUCTURE STRATEGY

We would like to thank all who contributed to the consultation on the strategy

The full report, detailed list of opportunities and accompanying map can be seen at
www.colnevalleypark.org.uk/whatwedo

contact us:

Colne Valley
colnevalley@groundwork.org.uk
www.colnevalleypark.org.uk

Crane Valley
cvp@greencorridor.org.uk
www.cranevalley.org.uk