

# SOUTH COLNE SUB-AREA 3

# South Colne character

South Colne is characterised by flatter topography as the River Colne approaches its confluence with the Thames. Braided watercourses and flood meadows typify the landscape, which is dominated in aerial views by a series of large reservoirs, the product of historic gravel extraction industry in the area. The South West London Reservoirs are internationally significant for the populations of overwintering birds they support, some from as far afield as the Arctic.

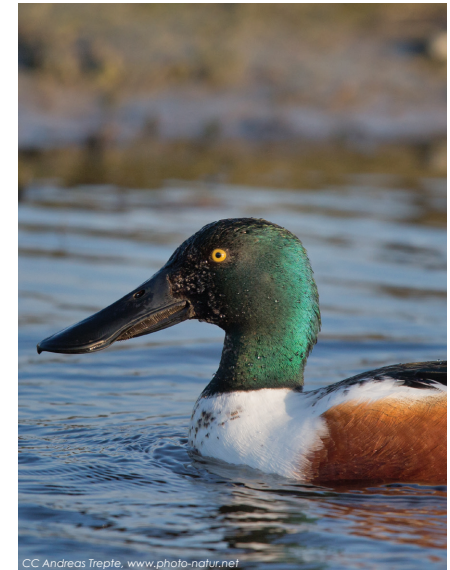
This area also includes Heathrow airport and the extensive associated transport infrastructure. In close proximity to the airport lie some significant heritage assets including Harmondsworth Barn, the largest timber-framed building in England.



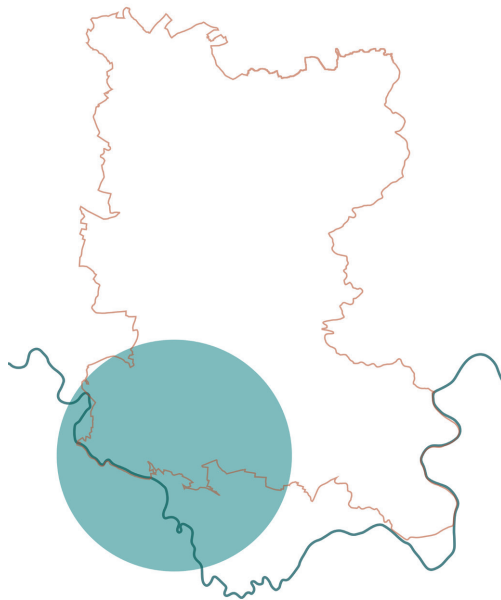
© Brian Robert Marshall  
Harmondsworth Barn



River Colne flowing through Staines Moor



CC Andreas Trepte, www.photo-natur.net  
Lakes and reservoirs important for overwintering wildfowl



© Stefan Czapski  
The Causeway at Staines Reservoir



Ankerwycke Priory - home to the Ankerwycke Yew



Colne Brook at Wraysbury - important for wildlife

# South Colne area strategy overview

The strategy for South Colne and Heathrow is to improve and repair the landscape and connectivity for people and wildlife, conserve and enhance valuable ecological habitats and promote access for all to new and improved landscape destinations.

Roads and other major infrastructure in this area create particular severance and impair the quality of the user experience. Improvements to footpaths and cycle routes including over and under roads with potential new 'greened' bridges (e.g. over the M25) will help to reconnect people with their landscapes, improving opportunities for health and wellbeing as well as biodiversity.

There is an opportunity to create new 'gateways' to the Colne Valley Regional Park at the Thames, Staines and Wraysbury to increase awareness of the park and reinforce strong connections to the Thames Path and other nearby sites including Ankerwycke Priory and Runnymede. Potential for a 'gateway arts project' integrated with a potential new river crossing at the Thames/ Colne Brook confluence could form part of a series of river end destinations linked to the River Thames Scheme. Gateway sites such as at Staines and Wraysbury should incorporate clear, defined routes with signage and interpretation which links to existing recreation routes.

The huge water bodies present a major opportunity for creating a regional water recreation hub destination, based on existing uses such as fishing, sailing, birdwatching and swimming, but enhanced with vibrant new facilities such as a visitor centre, landmark sculpture, bird hides and viewing platforms with

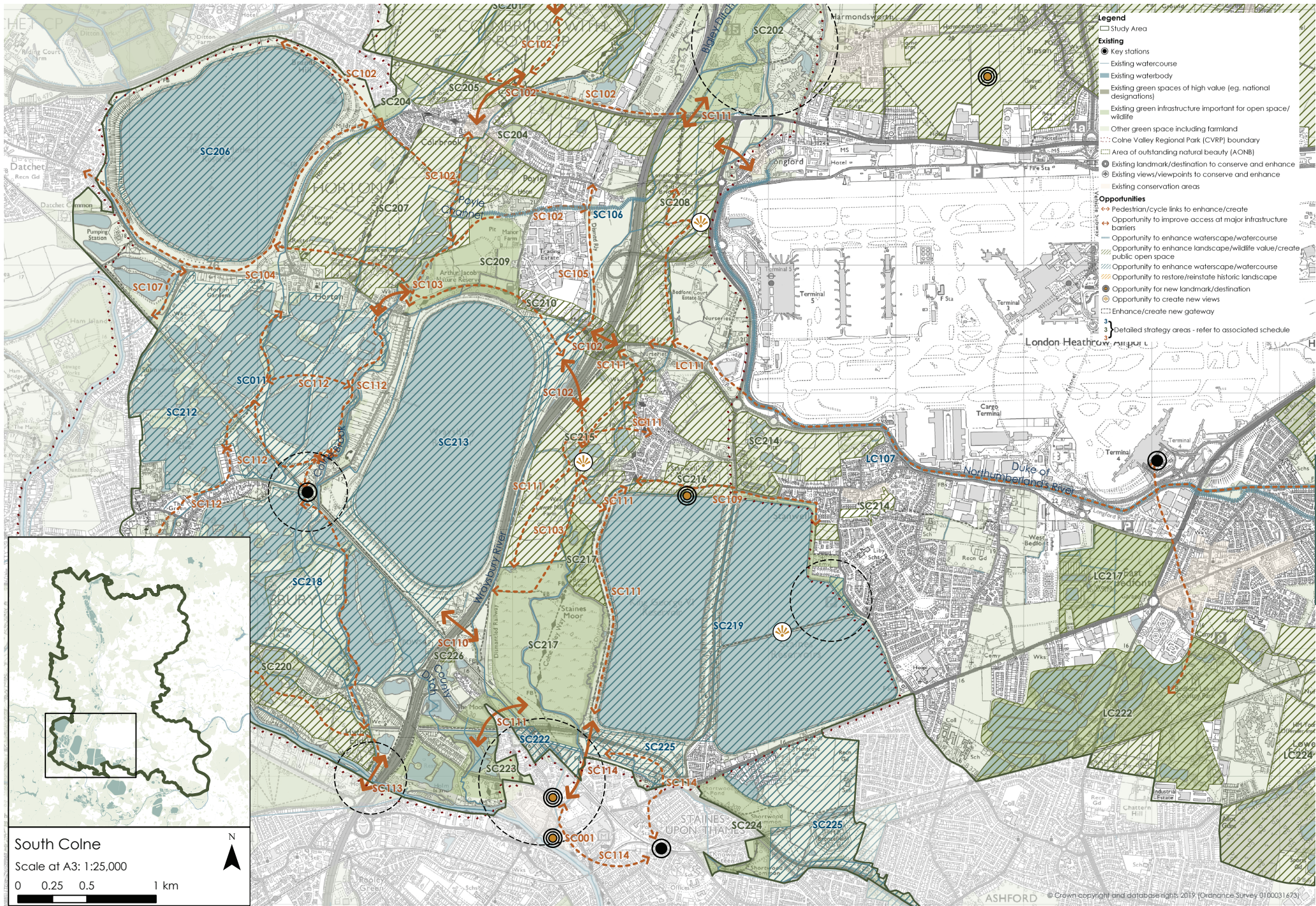
associated opportunities for education and interpretation and new viewpoints.

Water and biodiversity enhancements should aim to restore floodplains and focus on the benefits of natural landscapes to contribute to natural flood management in this low lying landscape. The Duke of Northumberland's River and Longford River close to Heathrow could be enhanced for water flow, water quality, wildlife value and pedestrian experience.

Heathrow airport has a huge impact on this landscape with regards to noise, severance and associated transport and landscape fragmentation. The special features such as conservation areas and listed buildings such as Harmondsworth Barn should be conserved and their settings enhanced, taking opportunities to focus landscape restoration in connecting assets and biodiversity corridors together. Areas such as Harmondsworth Moor (the largest park in the area) are unique and under threat, requiring careful protection.

A potential strategy for the remnant farmland in this area may be to consider converting it to multi-functional landscapes for recreation, ecosystem services and other types of productive use such as fruit-growing. There may be a potential opportunity for a new regional cultural centre and landmark such as opera house/ arts centre/ museum.





- Legend**
- Study Area
  - Existing**
    - Key stations
    - Existing watercourse
    - Existing waterbody
    - Existing green spaces of high value (eg. national designations)
    - Existing green infrastructure important for open space/wildlife
    - Other green space including farmland
    - Colne Valley Regional Park (CVRP) boundary
    - Area of outstanding natural beauty (AONB)
    - Existing landmark/destination to conserve and enhance
    - Existing views/viewpoints to conserve and enhance
    - Existing conservation areas
  - Opportunities**
    - Pedestrian/cycle links to enhance/create
    - Opportunity to improve access at major infrastructure barriers
    - Opportunity to enhance waterscape/watercourse
    - Opportunity to enhance landscape/wildlife value/create public open space
    - Opportunity to enhance waterscape/watercourse
    - Opportunity to restore/reinstate historic landscape
    - Opportunity for new landmark/destination
    - Opportunity to create new views
    - Enhance/create new gateway
- 3 Detailed strategy areas - refer to associated schedule

**DETAILED STRATEGIES**

South Colne  
 Scale at A3: 1:25,000  
 0 0.25 0.5 1 km



# South Colne schedule of opportunities

■ Water / wetland focused opportunities
 ■ Open space / green infrastructure focused opportunities
 ■ Access / connectivity focused opportunities

No.	Title	Description	Link to Principles	Further comments
SC001	Confluence of Colne with the Thames	Opportunity for new landmark gateway to identify the mouth of the Colne where it meets the Thames and Thames Path. Ensure linked with opportunity SC114/ SC222.	1. Celebrate landscape, character and heritage 3. Improve pedestrian and cycle connectivity	
SC011	South of Horton landscape enhancement	Existing restoration plan at Kingsmead, taking opportunities to ensure links into the wider landscape.  Conserve and enhance heritage features along Colne Brook including mills and sluices. Conserve and enhance views to Horton Church (Grade I listed) local landmark.	1. Celebrate landscape, character and heritage 2. Protect and enhance the natural environment 3. Improve pedestrian and cycle connectivity 6. Boost health and wellbeing	Biodiversity Opportunity Area.
SC101	Improve access over M4	Improve pedestrian and cycle access over M4 e.g. new green footbridge.	3. Improve pedestrian and cycle connectivity	To connect into existing/ potential new routes (e.g. MC108). Area of search from Horton Brook is the West to footpath IV20 in the East
SC102	Pedestrian and cycle access links between Colnbrook and Staines Moor	Create new access link for pedestrians and cyclists between Colnbrook/ Poyle to Arthur Jacob Nature Reserve to link in with existing footpaths and the Colne Valley Trail. Recognise significance of and link to Colnbrook village. Improve existing Colne Valley Trail to north of Wraysbury Reservoir – investigate potential for diversion off-road. Create a safe crossing point of Stanwell Road and improve crossing of the M25. Opportunity for new green bridge to provide acceptable pedestrian /cycle experience shielded from M25, trading estate and Heathrow airport.	3. Improve pedestrian and cycle connectivity	Poor quality streetscape and potential impacts from possible Heathrow expansion. Area of fragile landscape due to due to blight, lack of management regimes, and short term minerals/ waste activity. Benefits for local communities and access to local green space. Improves connections between communities, open spaces and the river corridor.
SC103	Access improvements near Colnbrook	Create new crossing over the A4 (busy road currently lacks existing crossing). Benefits for safety and connectivity of Colne Valley Trail.	3. Improve pedestrian and cycle connectivity	
SC104	Queen Mother Reservoir cycle route	Opportunity to create new cycle route around southern, northern and eastern perimeter of the Queen Mother Reservoir, linking Datchet with the existing entrance to the sailing club and linking existing cycle route adjacent to Majors Farm Road (B470) to area south of Colnbrook.	3. Improve pedestrian and cycle connectivity	
SC105	Potential green link	Investigate potential for new link to Colne Valley Trail on section of disused railway.	3. Improve pedestrian and cycle connectivity	Connects reservoirs with Frays Island and Mabey's Meadow Nature Reserve.

DETAILED STRATEGIES

No.	Title	Description	Link to Principles	Further comments
SC106	Poyle channel	Enhancements to river channel.	2. Protect and enhance the natural environment	Flood risk benefits
SC107	Sunnymeads link	Potential new link from Sunnymeads Station to nearby water recreation destinations such as the Aqua Park, local bus services and existing on-road link to Horton village.	3. Improve pedestrian and cycle connectivity	
SC109	Stanwell to Stanwell Moor Reservoir link	Improve pedestrian connectivity and experience along the northern side of Staines Reservoirs.	3. Improve pedestrian and cycle connectivity	Currently poor pedestrian experience, very narrow and heavily enclosed. Short distance where pedestrians must walk on footpath adjacent to B378.
SC110	M25 underpass enhancements	Improve existing underpass to M25 along Wraysbury River, including consideration of lighting, path width and signage.	3. Improve pedestrian and cycle connectivity	
SC111	Colne Valley Trail at King George VI Reservoir and link to Staines	Upgrade existing access routes forming part of the continuous Colne Valley Trail foot/ cycle route from Staines to Colnbrook / West Drayton and beyond, including enhancing user experience. Improve access under the A30. Improving access for leisure and commuting.	3. Improve pedestrian and cycle connectivity	Existing condition of public rights of way is relatively poor, with some poor crossings. To encourage walking/ cycling between local communities of Staines, Stanwell Moor and Heathrow and north. Forms important link from major gateway of Staines into the Colne Valley Regional Park.  Continuous Colne Valley Trail (Staines to Colnbrook/ West Drayton) Thames Water meeting notes - certain locations it might be possible to set back fencing.
SC112	Wraysbury Station Gateway and link	Create new 'Gateway' at Wraysbury Station with signage and wayfinding. Including link from Colne Brook footpath/ cycle way to be delivered in conjunction with Cemex/ Kingsmead restoration - connecting via Whitehall Lane. Improve links to Wraysbury village including enhancing views to Wraysbury church tower. Promote links to Colne Valley Trail to the north, local water-based recreation destinations, Horton village and south to Ankerwycke.	1. Celebrate landscape, character and heritage 3. Improve pedestrian and cycle connectivity	Existing poor connectivity across railway line to Wraysbury Station. Supports the synergy with National Trust project to link Runnymede and Ankerwycke
SC113	Ankerwycke, Colne Brook & the Thames access link	Create new link from Colne Brook at Hythe End to Ankerwycke with associated landscape improvements including enhancing the area around the mouth of the Colne Brook.  Opportunity for Thames crossing to link to public rights of way to the north and south of the River Thames.	1. Celebrate landscape, character and heritage 3. Improve pedestrian and cycle connectivity	To be considered with the context of the Runnymede Explored project to link Runnymede and Ankerwycke.

No.	Title	Description	Link to Principles	Further comments
SC114 SC222	Staines gateway to the Colne Valley Regional Park	<p>Create new 'gateway' at southern end of Colne Valley Regional Park through signage, interpretation and landscaping improvements. Opportunity for new access links following some existing public rights of way, including: along the Colne at Staines linking to Staines Moor under the railway. Wayfinding/ signage, interpretation at Two Rivers Shopping Area, between the River Ash corridor and Colne Valley Trail, between Staines railway station and the River Colne (SC114).</p> <p>Particular new landmark opportunity where the Colne meets the Thames for improving gateway and identity (see opportunity SC001).</p> <p>Enhance existing water and public space at the river confluence including removal of rubbish and improvement of bank sides (SC222).</p>	<ol style="list-style-type: none"> <li>1. Celebrate landscape, character and heritage</li> <li>3. Improve pedestrian and cycle connectivity</li> <li>6. Boost health and wellbeing</li> </ol>	<p>Will introduce new sustainable foot/ cycle link between Staines and the Colne Valley Regional Park which is currently poorly connected. To link to existing NCN 4, Colne Valley Trail &amp; Thames Path. Caution: cycle routes should not go across Stains Moor - the route west of KGV1 Reservoir should provide for cyclists.</p>
SC201	Landscape enhancements east of Slough	<p>Environmental enhancements to improve landscape character and visual amenity. Potential to contribute to natural flood management/ SUDS as much of the area lies within the flood zone.</p>	<ol style="list-style-type: none"> <li>1. Celebrate landscape, character and heritage</li> <li>2. Protect and enhance the natural environment</li> <li>5. Be adaptable and resilient to climate change</li> </ol>	
SC202	Harmondsworth Moor Country Park	<p>Conserve and enhance the landscape and character of the open space and recreational amenity. Enhance its status as a gateway to the CVRP - develop into key hub with improved visitor facilities and transport (including to and from the airport)/ improved pedestrian and cycle access. Enhance biodiversity. Recognise highly significant/vulnerable Harmondsworth barn, church and village and include within possible new gateway as heritage attraction. Green infrastructure opportunity should 'wrap around' the village to conserve its setting. Potential for community archaeology/heritage activities</p>	<ol style="list-style-type: none"> <li>1. Celebrate landscape, character and heritage</li> <li>2. Protect and enhance the natural environment</li> <li>3. Improve pedestrian and cycle connectivity</li> <li>6. Boost health and wellbeing</li> </ol>	<p>Heathrow airport - potential expansion Many important prehistoric sites discovered during quarrying – contact Berkshire Archaeology for specific information. Potential for wet woodland restoration?</p>
SC203	Heathrow villages strategic enhancements	<p>Conserve and enhance the special character of Harmondsworth and Harlington Conservation Areas. Create a masterplan for the future of the landscape to the north of Heathrow including community engagement/ groups and a business improvement strategy. Develop and publicise walks and cycle routes. Consider opportunity for a major new landmark/ visitor hub to create economic focus for investment e.g. opera house/ art gallery, including also creating links to noise attenuation to help mitigate noise from Heathrow.</p> <p>Conserve Grade I listed Harmondsworth Great Barn and its setting, distinctive and key feature to the character of the area. Potential opportunity to enhance interpretation/ access/ understand historic importance in conjunction with Harmondsworth Conservation Area improvements.</p>	<ol style="list-style-type: none"> <li>1. Celebrate landscape, character and heritage</li> <li>2. Protect and enhance the natural environment</li> <li>4. Provide for communities</li> <li>5. Be adaptable and resilient to climate change</li> <li>6. Boost health and wellbeing</li> </ol>	<p>Heathrow airport - potential expansion Many important prehistoric sites discovered during quarrying – contact Berkshire Archaeology for specific information. Potential for wet woodland restoration?</p>

No.	Title	Description	Link to Principles	Further comments
SC204	Colnbrook & Poyle open spaces/ access	Conserve & enhance existing parks and open spaces adjacent to the settlements and links with Colnbrook Conservation Area. Create biodiversity links with nearby sites including Pippins Park, Albany Park, Colnbrook Recreation Ground and Crown Meadow. Create new access to the south of Crown Meadow to link with nearby public rights of way, bus stop and open spaces. Open spaces are important to retain separation and distinctiveness of the villages. Recognise the link to Colnbrook Village.	<ol style="list-style-type: none"> <li>1. Celebrate landscape, character and heritage</li> <li>2. Protect and enhance the natural environment</li> <li>3. Improve pedestrian and cycle connectivity</li> </ol>	<p>Improving access to green space for local communities of Colnbrook and Poyle and reducing impact of locally detracting features such as busy roads.</p> <p>Brands Hill/ western end of Colnbrook in 30% most deprived percentile (IMD data).</p>
SC205	Landscape enhancements north of Colnbrook	Environmental enhancements to improve landscape character and visual amenity. Potential to contribute to natural flood management/ SUDS as much of the area lies within the flood zone. Opportunity to connect Pippins Park, Albany Park and Colnbrook Recreation Ground. biodiversity and walking/cycling routes.	<ol style="list-style-type: none"> <li>1. Celebrate landscape, character and heritage</li> <li>5. Be adaptable and resilient to climate change</li> </ol>	
SC206	Queen Mother Reservoir	Enhance biodiversity value of the reservoir banks and Northern perimeter. Opportunity for fixed point access for birdwatchers in combination with new foot/ cycle links around southern and eastern perimeter.	<ol style="list-style-type: none"> <li>2. Protect and enhance the natural environment</li> </ol>	Biodiversity Opportunity Area
SC207	Colnebrook, Poyle , Horton landscape enhancement	Restore and improve landscape quality and condition around Berkyn Manor Farm, including to reveal its historic character. Landscape improvements planned and funded as part of proposed quarry restoration. Provide links south to Horton village, Colnebrook and Poyle.	<ol style="list-style-type: none"> <li>1. Celebrate landscape, character and heritage</li> <li>2. Protect and enhance the natural environment</li> <li>3. Improve pedestrian and cycle connectivity</li> <li>6. Boost health and wellbeing</li> </ol>	Existing poor quality landscape at Berkyn Manor Farm including rubbish tipping. Biodiversity Opportunity Area.
SC208	Open space enhancements between Heathrow and M25	Enhance existing open space, biodiversity, landscape management, recreational experience and safety of Longfordmoor and land to the north. Interpretation boards and views. Enhance existing plane spotter location and promote as viewpoint.  Improve the environment of access routes/ access points including in the vicinity of the A3113. Improve pedestrian/ cycle access across the A0344.	<ol style="list-style-type: none"> <li>1. Celebrate landscape, character and heritage</li> <li>6. Boost health and wellbeing</li> </ol>	<p>Landscape in need of enhancement.</p> <p>River Colne at Harmondsworth Moor WFD project. Potential area for Heathrow expansion.</p>
SC209	Arthur Jacob Nature Reserve & Poyle Community Woodland	Conserve and manage existing nature reserve and community woodland. Improve access to river corridor (e.g. with land owner agreements). Opportunity for education and engagement with local communities.	<ol style="list-style-type: none"> <li>1. Celebrate landscape, character and heritage</li> <li>2. Protect and enhance the natural environment</li> <li>3. Improve pedestrian and cycle connectivity</li> <li>4. Provide for communities</li> </ol>	Ensuring legacy of valued open space and biodiversity assets.
SC210	Road and public realm enhancements on Horton Road	Public realm improvements in this heavily urbanised short link between green spaces to the east and west.	<ol style="list-style-type: none"> <li>1. Celebrate landscape, character and heritage</li> <li>3. Improve pedestrian and cycle connectivity</li> </ol>	



No.	Title	Description	Link to Principles	Further comments
SC212	Wraysbury Lakes	Conserve and enhance the natural value at Wraysbury Lakes (including areas designated Ramsar, SSSI, SPA), and promote their value for water recreation.	<ul style="list-style-type: none"> <li>2. Protect and enhance the natural environment</li> <li>6. Boost health and wellbeing</li> </ul>	Wraysbury 1 is home to Carp Team England and hosts many large events such as the World Carp Classic qualifier and BCAC finals throughout the course of the season.
SC213	Wraysbury Reservoir	Conserve and manage existing SSSI for existing wet/ lowland meadow habitats. Opportunity for wetland creation and habitat/ scrapes between the existing footpath and grazed reservoir embankment especially on the Southern perimeter. Restore landscape around the existing industrial/ storage uses and areas to the south and north within Thames Water curtilage.	<ul style="list-style-type: none"> <li>2. Protect and enhance the natural environment</li> <li>5. Be adaptable and resilient to climate change</li> </ul>	Enhancing biodiversity and condition of the SSSI. Potential for biodiversity enhancement along the southern edge of Wraysbury Reservoir. A Right of Way exists between the railway and the reservoir and the concrete palisade could be 'moved in'. Also in line with Thames Water's 25 Year Environment Plan. TVO3 Surrey Biodiversity Opportunity Area.
SC214	Stanwell open space improvements	<p>Enhance green spaces in Stanwell, creating biodiversity links with nearby open spaces. Enhance functional uses for recreation and community activities/ events and improve overall quality and amenity of spaces for the local community, creating visual links with the church.</p> <p>Enhance biodiversity on existing farmland, creating links with nearby green spaces - complementing the opportunity sites at King George VI Reservoir and quarry restoration site. Opportunity for future public access/ tree planting, dependent on future agricultural or other land use.</p> <p>Re-instate historic landscape at Stanwell Place (Remnants of the historic landscape remain around the quarry here although quarry is still operational).</p>	<ul style="list-style-type: none"> <li>1. Celebrate landscape, character and heritage</li> <li>4. Provide for communities</li> <li>5. Be adaptable and resilient to climate change</li> <li>6. Boost health and wellbeing</li> </ul>	Existing agricultural fields. Watercourse flows through it - potentially flooding in Stanwell Moor downstream.
SC215	Hithermoor landscape restoration	Quarry restoration (planned and funded) and adjacent landscape restoration/ enhancements from Stanwell Moor village to Staines Moor. Create sense of place, improve views and better route/ gateway from the village to the Moor. New public green space to be created. Potential for further connection to Staines Moor with multi-use link to the Colne Valley Trail. Potential to provide interpretation with the aspiration to tie in to the destination opportunity at King George VI Reservoir. Potential to increase status as a major destination/ landmark due to proximity to Staines gateway and the Thames reservoirs. Biodiversity enhancements in line with an appropriate landscape/ ecology masterplan.	<ul style="list-style-type: none"> <li>1. Celebrate landscape, character and heritage</li> <li>2. Protect and enhance the natural environment</li> <li>5. Be adaptable and resilient to climate change</li> </ul>	Recreation, biodiversity, remediation. Biodiversity Opportunity Area. Much of the area is within the flood zone. Lower Wraysbury WFD restoration project. Site is currently in industrial use, but has a good restoration plan. Plan can be complemented by ensuring connectivity with surrounding landscape.

No.	Title	Description	Link to Principles	Further comments
SC216	Stanwell Moor landscape improvements	Future opportunity for landscape improvements on existing landfill site in line with integrated restoration plan, linking with other opportunities including access links around King George VI Reservoir and associated opportunity for new viewpoint/ hide.	<ol style="list-style-type: none"> <li>Celebrate landscape, character and heritage</li> <li>Boost health and wellbeing</li> </ol>	Biodiversity Opportunity Area. Enhancements should ensure connectivity with surrounding landscape.
SC217	Staines Moor	Conserve and enhance the existing SSSI, lowland meadows habitat & grazing marsh habitat at Staines Moor. Opportunity for interpretation of cultural heritage and the story of the historical mead landscape. Ongoing management including pollarding willows at Bonehead Ditch. Opportunity for screening and also viewpoint creation along Bonehead Ditch. Opportunity to connect with restored landscapes in the North.	<ol style="list-style-type: none"> <li>Celebrate landscape, character and heritage</li> <li>Protect and enhance the natural environment</li> <li>Be adaptable and resilient to climate change</li> <li>Boost health and wellbeing</li> </ol>	Biodiversity Opportunity Area Lower Colne ditch restoration, and River Colne Staines Moor WFD projects.
SC218	Wraysbury Gravel Pits	Protect and enhance existing green and blue assets at Wraysbury Gravel Pits, including areas designated SPA, SSSI, Ramsar and semi-improved grassland habitats, complementing existing uses (fishing, sailing, water sports, swimming and birdwatching). Buffer and link with Wraysbury reservoir, Horton designated areas and Staines Moor. create and improve walking/cycle connections.	<ol style="list-style-type: none"> <li>Protect and enhance the natural environment</li> <li>Improve pedestrian and cycle connectivity</li> </ol>	Wraysbury 2 Lake Nature Reserve and angling lake. Biodiversity opportunity area. Angling presently only occurs on the Silverwing Lake and Watts Pool. Silverwing Lake is used for sailing. Heron Lake is used by disabled groups for water sports, and also for open water swimming. The remaining lakes were presently reserved for biodiversity. An active bird-ringing group use the site. Managed by Affinity Water. Colne Brook rehabilitation WFD project.
SC219	King George VI and Staines Reservoirs	Conserve and enhance wetlands and water bodies, of particular value for overwintering birds (part of South West London waterbodies designated SPA, SSSI, Ramsar). Promote water recreation where appropriate in liaison with Thames Water plans. Staines Reservoir - improve pedestrian experience along the causeway at Staines Reservoir - opportunity for stationary binocular/telescope viewing points, higher spec (vandal-proof) benches. Improve car park east of the reservoir. King George VI Reservoir - opportunity for bird watching point/ hide - potential location at northern bank following discussions with Thames Water, and accessed by new steps leading up to reservoir edge. Opportunity for biodiversity enhancements on northern bank.	<ol style="list-style-type: none"> <li>Celebrate landscape, character and heritage</li> <li>Protect and enhance the natural environment</li> <li>Improve pedestrian and cycle connectivity</li> <li>Provide for communities</li> <li>Be adaptable and resilient to climate change</li> <li>Boost health and wellbeing</li> </ol>	Strategic opportunity to create significant new destination, benefits for wildlife and education. Biodiversity Opportunity Area -Surrey TV03 Thames 25 Year Environment Plan Fly tipping issues at Staines reservoir car park. AT: Joined up working with Elmbridge as some of their reservoirs on opposite bank of Thames are part of the same Ramsar.
SC220	Wraysbury/ Hythe End	Enhance biodiversity value to improve ecological connectivity between Ankerwycke, Wraysbury and Church Lammas. Encourage small scale interventions which provide habitat links e.g. supporting traditional orchard land use north of Ankerwycke.	<ol style="list-style-type: none"> <li>Protect and enhance the natural environment</li> <li>Provide for communities</li> <li>Be adaptable and resilient to climate change</li> </ol>	

No.	Title	Description	Link to Principles	Further comments
SC221	Ankerwycke	Conserve and enhance this site and nationally significant heritage assets including Scheduled Monument, Ankerwycke Yew, Benedictine Ankerwycke Priory, memorials and National Trust Riverside Meadows. Potential/ proposed walks, biodiversity enhancement and access improvements proposed/ underway as part of National Trust HLF proposals for Ankerwycke and Runnymede. Potential cycle access improvements.	<ol style="list-style-type: none"> <li>1. Celebrate landscape, character and heritage</li> <li>2. Protect and enhance the natural environment</li> <li>3. Improve pedestrian and cycle connectivity</li> </ol>	To link with Ankerwycke National Trust, 'Runnymede Revealed' HLF project.
SC223	Lammas Park & Church Lammas gateway open space	Promote the existing open spaces as the southern gateway to the Colne Valley Regional Park. Develop clear access links to Staines Moor.	<ol style="list-style-type: none"> <li>1. Celebrate landscape, character and heritage</li> <li>3. Improve pedestrian and cycle connectivity</li> </ol>	
SC224	Shortwood Pond and Shortwood Common	Conserve and enhance Shortwood Pond SSSI and Site of Nature Conservation Importance. Semi-improved grassland habitat. Ancient commons. Eradicate/contain invasive non-native aquatic plants in Shortwood Pond to restore endangered native biodiversity	<ol style="list-style-type: none"> <li>2. Protect and enhance the natural environment</li> </ol>	Of biological importance for its alluvial grassland vegetation and is a fine example of the original floodplain landscape of the area. Community volunteer groups assist with maintenance and management includes grazing by cattle.
SC225	River Ash corridor	Enhance River Ash corridor and landscape enhancements/ restoration. Heritage features including Staines aqueduct. Open spaces include Priory Green, Birch Green, Bronze field public open space, Fordbridge Park and surviving part of the historic Stanwell Brook. Improve managed access and connectivity along the river corridor to Staines. Creation of wetlands under delivery, with further proposals to extend habitat improvements.	<ol style="list-style-type: none"> <li>1. Celebrate landscape, character and heritage</li> <li>2. Protect and enhance the natural environment</li> <li>3. Improve pedestrian and cycle connectivity</li> <li>5. Be adaptable and resilient to climate change</li> </ol>	Landscape currently in poor condition in need of enhancement. Land along the River Ash is subject to flooding. Ash Corridor and Sweeps Ditch Corridor exist as features in the Spelthorne Adopted Local Plan, including the watercourse, Green Belt, public open spaces and other designated land. Green Belt here is a very narrow strip, important for retaining sense of separation between the settlements of Staines and Ashford. Open space here is also vital to maintain the continuity of landscape and habitat along the Ash floodplain. Biodiversity Opportunity Area.
SC226	Moor Lane Nature Reserve	Mosaic of wetland and woodland used for fishing but an important buffer to M25.  Potential opportunity at the adjacent site The Willows (Formerly Cambridge Kennels) for visitor centre or habitat creation. An important buffer between Staines Moor and M25.	<ol style="list-style-type: none"> <li>2. Protect and enhance the natural environment</li> </ol>	

## **COLNE AND CRANE GREEN INFRASTRUCTURE STRATEGY**

We would like to thank all who contributed to the consultation on the strategy

**The full report, detailed list of opportunities and accompanying map can be seen at**  
[www.colnevalleypark.org.uk/whatwedo](http://www.colnevalleypark.org.uk/whatwedo)

### **contact us:**

Colne Valley  
[colnevalley@groundwork.org.uk](mailto:colnevalley@groundwork.org.uk)  
[www.colnevalleypark.org.uk](http://www.colnevalleypark.org.uk)

Crane Valley  
[cvp@greencorridor.org.uk](mailto:cvp@greencorridor.org.uk)  
[www.cranevalley.org.uk](http://www.cranevalley.org.uk)